



**Installation Manual
2020-2023 Chevy/GMC
2500&3500 HD
Upper Control Arms
Part # 10958**

ZS11232022

Part # 10958

2020-2023 Chevy/GMC 2500 & 3500 HD
Upper Control Arms

Part #	Description	Qty.
13014-01	Driver side upper control arm	1
13014-02	Passenger side upper control arm	1
10958NB	Hardware Bag	1

It is the responsibility of the customer/installer to wear safety glasses at all times when performing this installation.

It is the customers/installers responsibility to read and understand all steps before installation begins. If you have any questions or concerns, please contact our technical department @ (801) 280-2777. Also, the OEM manual should be used as a reference guide.

This vehicles reaction and handling characteristics may differ from standard cars and/or trucks. Modifications to improve and/or enhance off road performance may raise the intended center of gravity. Extreme caution must be utilized when encountering driving conditions which may cause vehicle imbalance or loss of control. **DRIVE SAFELY!** Avoid abrupt maneuvers: such as sudden sharp turns which could cause a roll over, resulting in serious injury or death.

It is the customers responsibility to make sure that a re-torque is performed on all hardware associated with this suspension system after the first 100 miles of installation. It is also the customers responsibility to do a complete re-torque after every 3000 miles or after every off road use.

After the original installation, Tuff Country EZ-Ride Suspension also recommends having the alignment checked every 6 months to ensure proper tracking, proper wear on tires and front end components. Tuff Country EZ-Ride Suspension takes no responsibility for abuse, improper installation or improper suspension maintenance.

Congratulations on your selection to purchase a Tuff Country EZ-Ride Suspension System. We at Tuff Country EZ-Ride Suspension are proud to offer a high quality product at the industries most competitive pricing. Thank you for your confidence in us and our product.

The Tuff Country EZ-Ride Suspension product safety label that is included in your kit box must be installed inside the cab in plain view of all occupants.

Make sure to use thread locker or loctite on all new and stock hardware associated with the installation of this suspension system.

After the completion of the installation, a front end alignment is required.

Important customer information:

Tuff Country EZ-Ride Suspension highly recommends that a qualified or a certified mechanic performs this installation.

Limited lifetime warranty

Notice to all Tuff Country EZ-Ride Suspension customers: It is your responsibility to keep your original sales receipt! If failure should occur on any Tuff Country EZ-Ride Suspension component, your original sales receipt must accompany the warranted unit to receive warranty. Warranty will be void if the customer can not provide the original sales receipt. Do not install a body lift in conjunction with a suspension system. If a body lift is used in conjunction with any Tuff Country EZ-Ride Suspension product, your Tuff Country EZ-Ride Suspension WARRANTY WILL BE VOID. Tuff Country Inc. ("Tuff Country") suspension products are warranted to be free from defects in material and workmanship for life if purchased, installed and maintained on a non-commercial vehicle; otherwise, for a period of twelve (12) months, from the date of purchase and installation on a commercial vehicle, or twelve thousand (12,000) miles (which ever occurs first). Tuff Country does not warrant or make any representations concerning Tuff Country Products when not installed and used strictly in accordance with the manufacturer's instructions for such installation and operation and accordance with good installation and maintenance practices of the automotive industry. This warranty does not apply to the cosmetic finish of Tuff Country products nor to Tuff Country products which have been altered, improperly installed, maintained, used or repaired, or damaged by accident, negligence, misuse or racing. ("Racing is used in its broadest sense, and, for example, without regards to formalities in relation to prizes, competition, etc.) This warranty is void if the product is removed from the original vehicle and re-installed on that or any other vehicle. This warranty is exclusive and is in lieu of any implied warranty of merchantability, fitness for a particular purpose or other warranty of quality, whether express or implied, except the warranty of title. All implied warranties are limited to the duration of this warranty. The remedies set forth in this warranty are exclusive. This warranty excludes all labor charges or other incidental or consequential damages. Any part or product returned for warranty claim must be returned through the dealer of the distributor from whom it was purchased. Tuff Country reserves the right to examine all parts returned to it for warranty claim to determine whether or not any such part has failed because of defect in material or workmanship. The obligation of Tuff Country under this warranty shall be limited to repairing, replacing or crediting, at its option, any part or product found to be so defective. Regardless of whether any part is repaired, replaced or credited under this warranty, shipping and/or transportation charges on the return of such product must be prepaid by the customer under this warranty.

Before installation begins, Tuff Country EZ-Ride Suspension highly recommends that the installer performs a test drive on the vehicle. During the test drive, check to see if there are any uncommon sounds or vibrations. If uncommon sounds or vibrations occur on the test drive, uncommon sounds or vibrations will be enhanced once the suspension system has been installed. Tuff Country EZ-Ride Suspension highly recommends notifying the customer prior to installation to inform the customer of these issues if they exist.

This Suspension kit comes with (1) installation manual and some post installation procedure literature and it is the installers responsibility to make sure that the customer receives the post installation procedure literature. If a customer would like a copy of the installation manual, please have them visit our website at www.tuffcountry.com. Have them go to the customer care section to download these instructions. If you have any questions, please feel free to call us at (801) 280-2777.

Recommended tool selection:

- Torque wrench
- Standard socket set
- Standard wrench set
- Metric socket set
- Metric wrench set
- Tape Measure

10958NB Hardware bag:

<u>Part #</u>	<u>Description</u>	<u>Qty.</u>
S10238	.850" x .630" x 2.560" sleeve	4
M02617-BK-01	Poly bushing	8
SERT06	Threaded Grease fitting	4

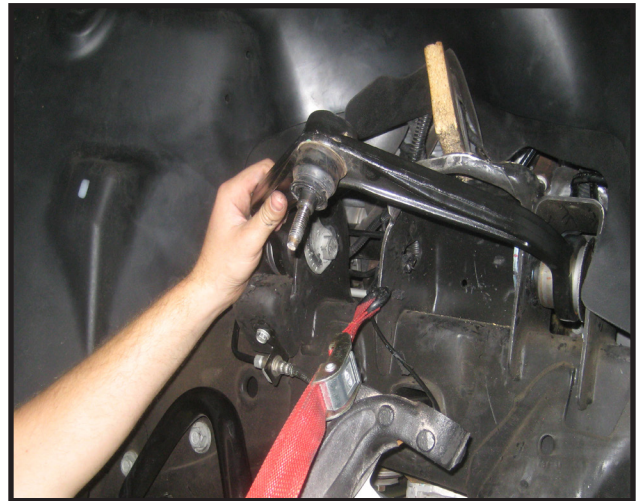
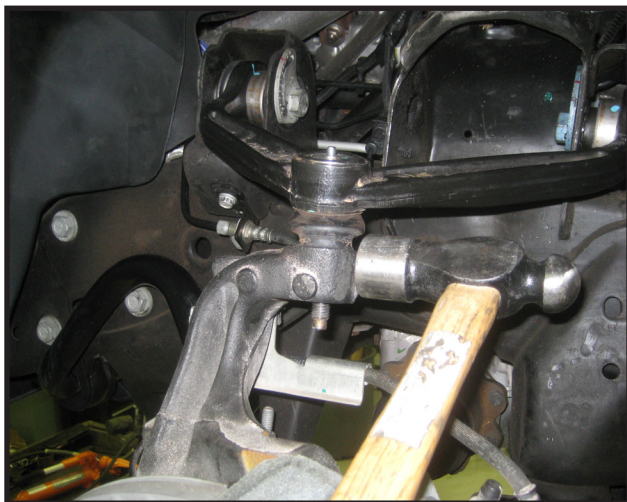
1. To begin installation, block the rear tires of the vehicle so that the vehicle is stable and can't roll backwards. Safely lift the front of the vehicle and support both the driver and passenger side frame rail with jack stands. Remove the tires and wheels from both sides.

2. Working on the driver side, place a suitable jack under the lower control arm and carefully raise up on it about 1".

3. Remove the hardware that attaches the upper ball joint to the top of the steering knuckle



4. Carefully separate the upper ball joint from the steering knuckle by using a hammer to strike the knuckle and breaking it loose.



5. Remove the cam adjusting bolts that hold the upper control arm to its frame mounts. **Take note of the location of these bolts.**



6. Remove the OE upper control arm from the vehicle.

Repeat steps 2 - 6 on the passenger side.

7. Locate the new Tuff Country upper control arms.

Important Note: Included should be a Driver side arm and a Passenger side arm, It is important to make sure you have received the correct arms. driver side is marked with a single notch cut out of the gusset, and the passenger side arm is marked with a double notch.



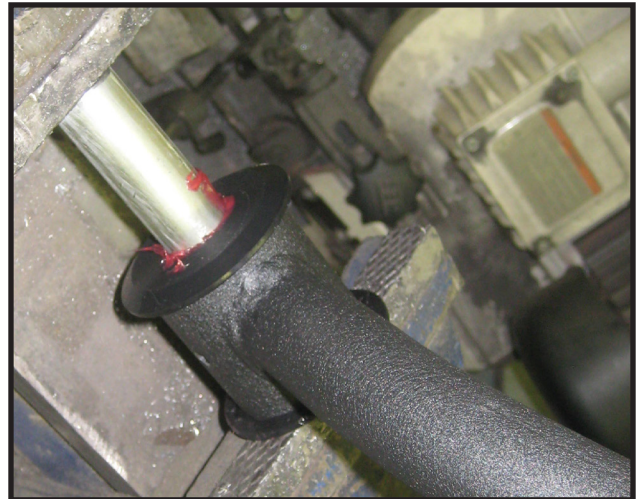
Driver side arm



Passenger side arm

8. Locate (8) M02617-BK-01 poly bushings, (4) S10228 sleeves, and (4) threaded grease fittings from hardware bag 10958NB.

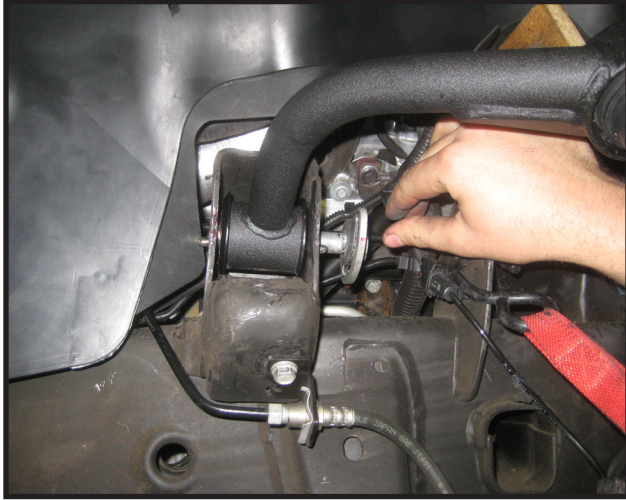
9. Install the new bushings and crush sleeves into the upper control arms. **Special note: Make sure to use a fair amount of lithium or moly based grease before installing the new bushings and sleeves into the control arms. This will increase the life of the bushings and help prevent squeaking.**



10. Install the threaded grease fittings into each eyelet, be sure to not over tighten these. Also make sure to point them towards the outside of the vehicle to allow for easy access.



11. Install the new upper control arms into the vehicle using the OE cam adjusting bolts and hardware. Make sure to install the bolts in the same orientation they were removed. **Torque to 125 ft lbs.**



12. Carefully raise up on the lower control arm so that you can install the new upper ball joint into the steering knuckle. Secure using the new castle nut and cotter pin. **If you are not able to install the cotter pin because the hole in the ball joint does not line up with the castle nut, DO NOT loosen the nut, but instead, tighten it until the cotter pin can be installed. Torque to 70 ft lbs.**



Congratulations, installation complete!

After the completion of this installation, Tuff Country EZ-Ride Suspension recommends taking the vehicle to an alignment shop and having the proper front end alignment performed.

Tuff Country Ez-Ride Suspension recommends that a complete re-torque is done on all the bolts associated with this suspension system. It is the customers responsibility to make sure that a re-torque is performed on all hardware associated with the system after the first 100 miles of installation. It is also the Customers responsibility to do a complete re-torque after every 3,000 miles or after every off road use. Neglect of following these steps could cause brackets to come loose and cause serious damage to the suspension system and to the vehicle.