

RD163

Dana 60,30 SPL,4.10 & DN

PARTS LIST

| ITEM # | QTY | DESCRIPTION | PART # | NOTES |
|--------|-----|---|--------------|-------|
| 1 | 1 | SEAL HOUSING O-RINGS (PK OF 2) | 160248SP | 1 |
| 2 | 1 | SEAL HOUSING KIT | 082104SP | |
| 3 | 1 | SHIM KIT | SHK001 | |
| * | 2 | MASTER SHIM | SEE NOTE | 4 |
| 4 | 1 | BONDED SEAL | 160703SP | |
| 5 | 1 | CLUTCH GEAR & WAVESPRING KIT | 050907SP | 7 |
| * | 1 | CLUTCH GEAR & RETURN SPRINGS KIT | 050807SP | 7 |
| 6 | 1 | SPIDER BLOCK | 070402SP | |
| 7 | 1 | LONG CROSS SHAFT | 061501SP | |
| 8 | 1 | SIDE GEAR | SEE NOTE | 3 |
| 9 | 1 | COUNTERSUNK SCREW (PK OF 2) | 200214SP | |
| 10 | 1 | RETAINING PIN SET (PK OF 4) | 120601SP | |
| 11 | 2 | TAPERED ROLLER BEARING | NOT SUPPLIED | 2 |
| 12 | 1 | FLANGE CAP KIT | 028606SP | |
| 13 | 1 | WAVESPRING | 150707SP | 7 |
| * | 1 | RETURN SPRINGS | 150107SP | 7 |
| 14 | 1 | SPLINED SIDE GEAR | SEE NOTE | 3 |
| 15 | 2 | SHORT CROSS SHAFT | 061601SP | |
| 16 | 4 | PINION GEAR | SEE NOTE | 3 |
| 17 | 4 | PINION THRUST WASHER | SEE NOTE | 5 |
| 18 | 2 | SIDE GEAR THRUST WASHER | SEE NOTE | 5 |
| 19 | 1 | DIFFERENTIAL CASE (SUITS WAVESPRING ONLY) | 013226SP | 6 |
| * | 1 | DIFFERENTIAL CASE (SUITS RETURN SPRINGS ONLY) | 013206SP | 6 |
| * | 1 | BULKHEAD FITTING KIT (BANJO TYPE) | 170114 | 8 |
| * | 1 | AIR LINE (6mm DIA X 6m LONG) | 170314 | 8 |
| * | 1 | SOLENOID VALVE (12V) | 180103 | |
| * | 1 | SWITCH | 180209SP | |
| * | 1 | SWITCH COVER (FRONT) | 180210SP | |
| * | 1 | SWITCH COVER (REAR) | 180211SP | |
| * | 1 | CABLE TIE (PK OF 25) | 180305 | |
| * | 1 | OPERATING & SERVICE MANUAL | 210200 | |
| * | 1 | INSTALLATION GUIDE | 2102163 | |

* *Not illustrated in exploded view*

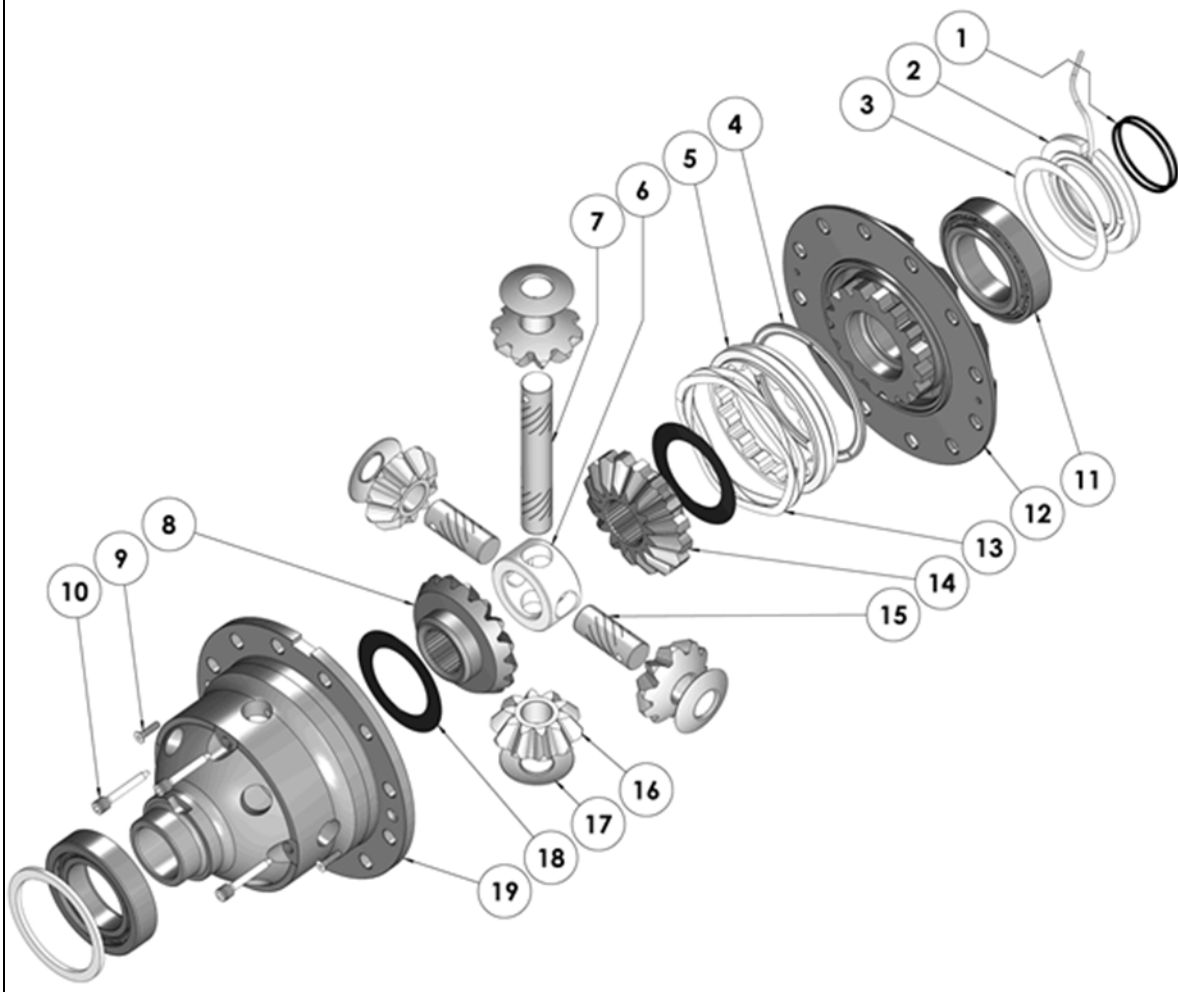
NOTES

- 1 For replacement O-rings use only BS140 Viton 75.
- 2 For replacement bearing use Timken part # 387A / 382S.
- 3 Available only as complete 6 gear set # 728K091.
- 4 Use 150331 (4.0mm thick) for diff with thin bearing cup.
- 5 Available only as complete thrust washer kit #730K01.
- 6 Replacement diff case only available suited for wavespring. If diff comes originally with return springs, the clutch gear & spring set will need replacement using 050907SP, along with diff case 013226SP.
- 7 Replace the spring and/or the corresponding clutch gear with the same type.
(If spring type is changed, a matching diff case must also be used. See item 19.)
- 8 All diffs produced before serial #17070001 came with 5mm air connection system. For information contact ARB.
- For ratios of 4.56:1 and up refer to RD162 ([Section 2.162](#)).

RD163

Dana 60,30 SPL,4.10 & DN

EXPLODED DIAGRAM



SPECIFICATIONS

| | |
|--------------------|----------------------------|
| Axle Spline | 30 tooth, Ø33.3mm [1.31"] |
| Ratio Supported | 4.56:1 & up |
| Ring Gear ID | 162.0mm [6.38"] |
| Ring Gear OD | 248mm [9.75"] |
| Ring Gear Bolts | 12 bolts on Ø191mm [7.50"] |
| Ring Gear Torque | 149Nm [110 ft-lb] |
| Backlash | 0.15-0.25mm [0.006-0.010"] |
| Bearing Cap Torque | 108Nm [80 ft-lb] |

ARB Corporation Ltd • 42-44 Garden St Kilsyth VIC 3137 Australia
 ARB 4X4 Accessories USA • 720 SW 34th St Renton WA 98057 USA
 Australia & International Customer Service • +61 3 9761 6622
 North America Customer Service • Toll Free 866 293 9078
www.arb.com.au (AUS & Int) www.arbusa.com (N. America)

