

ARB NUDGE BAR TO SUIT FORD ESCAPE 2001 ON

PRODUCT No :- 3140020

WARNING

FOR VEHICLES EQUIPPED WITH SRS AIRBAG
WHEN INSTALLED IN ACCORDANCE WITH THESE INSTRUCTIONS, THE FRONT PROTECTION BAR DOES NOT AFFECT OPERATION OF THE SRS AIRBAG.

TAKE NOTE OF THE FOLLOWING:

- **THIS PRODUCT MUST BE INSTALLED EXACTLY AS PER THESE INSTRUCTIONS USING ONLY THE HARDWARE SUPPLIED.**
- **IN THE EVENT OF DAMAGE TO ANY NUDGE BAR COMPONENT, CONTACT YOUR NEAREST AUTHORISED ARB STOCKIST. REPAIRS OR MODIFICATIONS TO THE MOUNTING SYSTEM MUST NOT BE ATTEMPTED.**
- **DO NOT USE THIS PRODUCT FOR ANY VEHICLE MAKE OR MODEL, OTHER THAN THOSE SPECIFIED BY ARB.**
- **DO NOT REMOVE LABELS FROM THIS NUDGE BAR.**
- **THIS PRODUCT OR ITS FIXING MUST NOT BE MODIFIED IN ANY WAY.**

FITTING KIT No: - 6171837

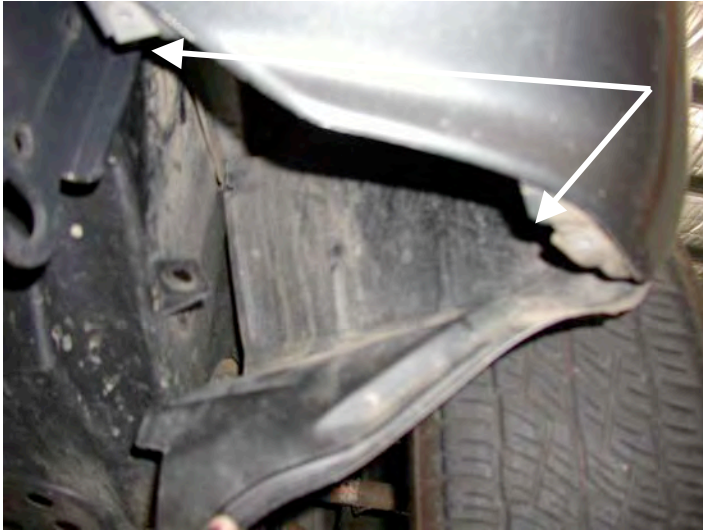
USE	PART No	QTY	DESCRIPTION
NUDGE BAR TO VEHICLE	6131251	1	NUDGE BAR ASSY
	4581292	6	WASHER SPRING M10 BLK ZC
	6151320	6	SCREW HX HD M10 X 25mm BLK ZC
	4581291	6	WASHER FLAT M10 BLK ZC
	6151304	6	NUT CAGED M10
	3756575R&L	1 SET	BRACKET MOUNT NUDGE
DRIVING LIGHT PANEL TO NUDGE BAR	6522037	1	DRIVING LIGHT PANEL
	6151256	4	SCREW BUTTON HEAD M6
	6151128	4	NUT FLANGE M6
NUMBER PLATE TO CROSSPANEL	6151256	2	SCREW BUTTON HEAD M6
	6151128	2	NUT FLANGE M6

Tools Required

Basic metric socket and spanner sets and 4mm Hex key.

Optional Extras suited for this bar includes a range of IPF driving lights and durable driving light covers. Contact your nearest ARB stockist for further information.

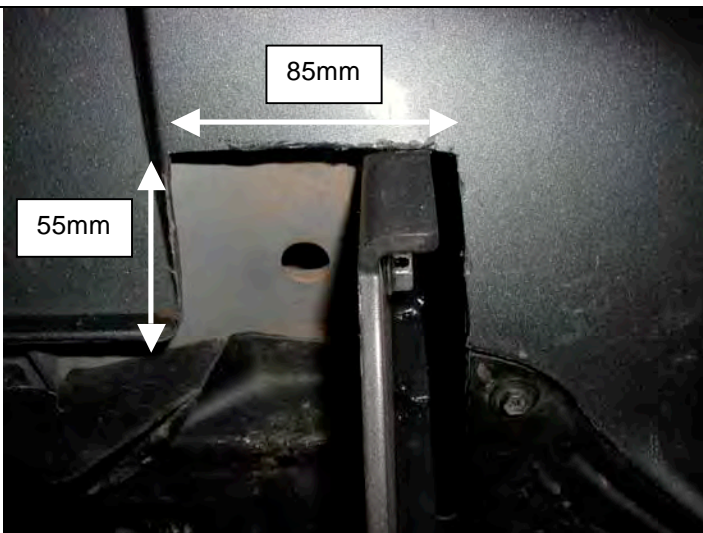
ASSEMBLY SEQUENCE FOR NUDGE BAR.



1. Unscrew and remove plastic retaining screws two places as shown on plastic trim under guard. Pull and tie back so you can gain easy access to tow brackets for removal.

Note: If fog lights are fitted in the bumper, it may be easier, for ease of bracket fitting, to remove the entire bumper section. Remove 3 x plastic clips in wheel arch area. Then remove plastic clip plug at bumper and guard flange area. Unscrew 3 x bolts on plastic tabs under bumper. Undo fog light connections. Remove two plastic clip plugs on lower number plate panel area. Unscrew two bolts on top of bumper at bonnet opening line. Remove bumper and place on soft non abrasive surface.

With the bumper off, the section cutouts can be completed shown in step 2.



2. Enlarge slot in lower plastic bumper cover (as shown) around area where new tow brackets are to be fitted. Remove existing tow brackets secured with 5 x M10 screws per side. Note: Retain these screws because they are reused. Fit the new nudge bar mount brackets using the original M10 screws and mount points.

Once the brackets are fitted, refit bumper.

Don't forget to reconnect the fog lights!



3. Insert M10 caged nuts to inside of mount brackets on frame assembly, 3 places per bracket as shown.

Hint, you may use a flat blade screw driver to assist to prize the caged nut into place. See fig 2



Fig 2



4. Using M10x25 screw, spring and flat washer sets, fit nudge bar assembly to vehicle. Care must be taken to not damage the cage nut flanges when moving the bar into position. Adjust to obtain even clearance to vehicle front. Tighten up all fixing screws. Reset and screw lower plastic flap back in position.



NOTE: Due to close fitting nature of cover profile to tubing, care must be taken to avoid damage to powder coat finish when fitting. Adjust panel position to make sure panel will not mark tubing finish when secured with screws.

5. Remove plastic cover from light mount panel and fit ARB domed badge. Fit cover to nudge bar using M6 dome head screws and flanged nuts.
6. Fit number plate to crosspiece lower flange using M6 dome head screws and flange nuts.