



FITTING INSTRUCTIONS

Part Number: **3462030**
Product
Description: **BULL BAR WINCH TYPE**
Suited to **CHEVROLET C/K 1500-3500 1988-1998 YEAR MODEL**
vehicle/s: **RANGE AND Warn 9,500-15,000lb WINCHES**

WARNING

REGARDING VEHICLES EQUIPPED WITH SRS AIRBAG:

When installed in accordance with these instructions, the front protection bar does not affect operation of the SRS airbag.

ALSO, NOTE THE FOLLOWING:

- ◆ This product must be installed exactly as per these instructions using only the hardware supplied.
- ◆ In the event of damage to any bull bar component, contact your nearest authorised ARB stockist. Repairs or modifications to the impact absorption system must not be attempted.
- ◆ Do not use this product for any vehicle make or model, other than those specified by ARB.
- ◆ Do not remove labels from this bull bar.
- ◆ This product or its fixing must not be modified in any way.
- ◆ The installation of this product may require the use of specialized tools and/or techniques
- ◆ It is recommended that this product is only installed by trained personnel
- ◆ These instructions are correct as at the publication date. ARB Corporation Ltd. cannot be held responsible for the impact of any changes subsequently made by the vehicle manufacturer
- ◆ During installation, it is the duty of the installer to check correct operation/clearances of all components
- ◆ Work safely at all times
- ◆ Unless otherwise instructed, tighten fasteners to specified torque

ARB 4x4 ACCESSORIES

Corporate Head Office

42-44 Garden St
Kilsyth, Victoria
AUSTRALIA 3137

Tel: +61 (3) 9761 6622
Fax: +61 (3) 9761 6807

Australian enquiries
North & South American enquiries
Other international enquiries

sales@arb.com.au
sales@arbusa.com
exports@arb.com.au



www.arb.com.au

FITTING REQUIREMENTS

REQUIRED TOOLS FOR FITMENT OF PRODUCT:

Metric Spanner and Socket sets	Allen key set
Phillips head screwdriver	Dia 10.0 drill bit
Electric drill 13mm chuck	

HAVE AVAILABLE THESE SAFETY ITEMS WHEN FITTING PRODUCT:

Protective eyewear		Hearing protection	
--------------------	---	--------------------	---

NOTE: 'WARNING' notes in the fitting procedure relate to OHS situations, where to avoid a potentially hazardous situation it is suggested that protective safety gear be worn or a safe work procedure be employed. If these notes and warnings are not heeded, injury may result.

FASTENER TORQUE SETTINGS:

SIZE	Torque Nm	Torque lbft
M6	9Nm	4lbft
M8	22Nm	16lbft
M10	44Nm	32lbft
M12	77Nm	57lbft

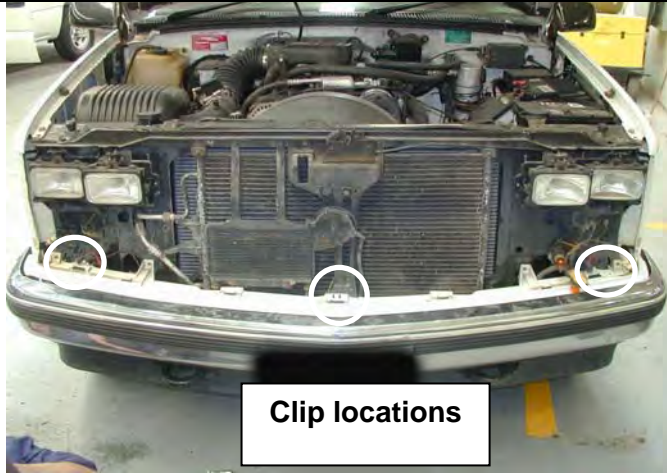
NOTE: Shipping brackets connecting bull bar to pallet and associated fasteners are not intended to be reused in fitted bar assembly.

PARTS LISTING			
APPLICATION	PART NO.	QTY	DESCRIPTION
MOUNT BRACKETS TO VEHICLE	3756825L	1	BRACKET BAR MOUNT LHS
	3756825R	1	BRACKET BAR MOUNT RHS
	3199815	2	PLATE WELD NUT
	3199813	2	PLATE WELD NUT TOW HOOK
	4581049	10	M12 WASHER FLAT
	4581050	10	M12 WASHER SPRING
	6151255	10	BOLT M12 X 40
	3756897R	1	<i>REINFORCING BRACKET 2500</i>
	3756897L	1	<i>REINFORCING BRACKET 2500</i>
	6151357	4	<i>BOLT SEMS M10X30</i>
	6151321	4	<i>NUT FLANGE M10</i>
WINCH	180302	8	CABLE TIE
	6151251	2	BOLT M16 X 150
	6151252	2	NUT NYLOC M16
	4581051	2	WASHER M16
CONTROL BOX FITTMENT	6151046	2	WASHER M6
	6151128	2	NUT FLANGE M6
	6151017	2	BOLT M6 X 16mm
	BLB 460	2	CABLE EXTENSION NEGATIVE
	BLR 460	1	CABLE EXTENSION POSITIVE
	3756835	1	BRACKET STD CONTROL BOX
NUMBER PLATE FITTMENT	6151017	4	BOLT M6 X 16mm
	6151128	4	NUT FLANGE M6
	6151046	4	WASHER M6
	3751451	1	BRACKET NO.PLATE
BAR TO MOUNT ASSEMBLY	6151255	6	BOLT M12 X 40mm
	4581050	6	WASHER SPRING M12
	4581049	12	WASHER FLAT M12
	6151321	4	NUT M10 FLANGED
	6151357	4	BOLT SEMS M10 X 30mm
	6151189	6	NUT M12x1.75
INDICATOR ASSY	6821151R	1	INDICATOR ASSY RHS
	6821151L	1	INDICATOR ASSY LHS
	6151308	4	SCREW SELF TAPPING
	6821116	4	NUT NYLON PLUG
	6821152	2	LOOM
	180701	6	SCOTCH LOCKS
	180302	4	CABLE TIE

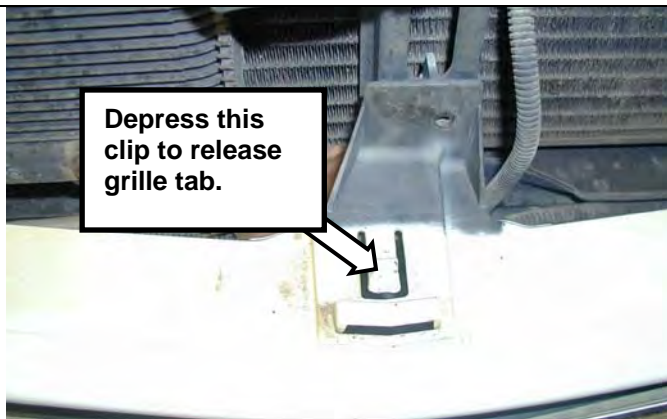
FITTING PROCEDURE



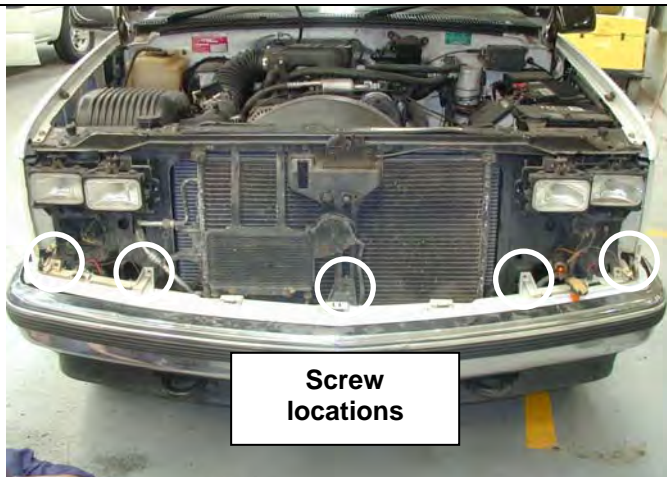
1. Remove the parker/indicator lights



2. Undo and remove the grille. Undo the four screws across the top and three clips into lower plastic trim (locations as shown). Depress clips to release tabs on grille (as shown at Step 3). One clip is located in the lower centre of the grille and two are located outboard below the indicator light positions located as shown.



3. Showing clip detail, note that you may need a large flat blade screwdriver to reach the middle clip while reaching behind grille.



4. Remove plastic trim, this is secured by five screws located as shown.

FITTING PROCEDURE



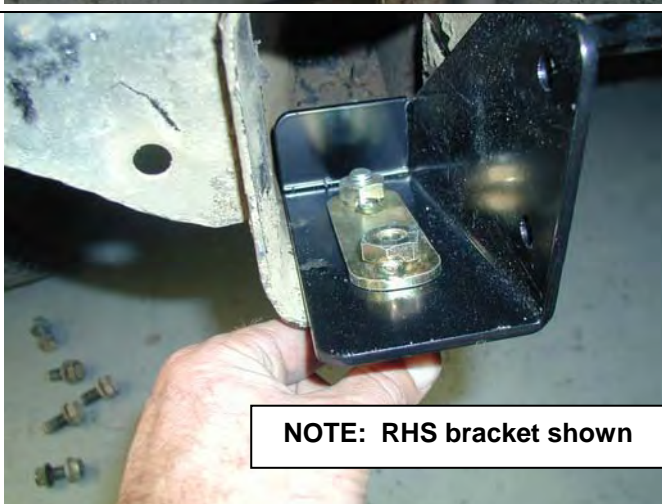
5. Remove bumper. Undo any electrical connections to lights in bumper. Undo two bolts per side retaining the bumper stabilising bars to the chassis. Loosen only the two bolts securing the stabiliser bars to the bumper, the bars should now be able to swing away from chassis. Undo the three bolts per side securing the bumper mount brackets to the chassis. Remove bumper.



6. Remove tow hooks, these will not need to be refitted.



7. Remove plastic trims from lower front of guards. At the indicated cut line (along the moulded feature line approx. 23mm from top face) cut and retain the lower section of these trims. Deburr, if necessary touch up and refit the trims.



NOTE: IF THE CHASSIS IS 2500/3500 THEN FIT ADDITIONAL BRACKETS AS SHOWN IN STEPS 8 & 9, OTHERWISE PROCEED TO STEP 10.

8. Insert the brackets (note they are handed) with the short end inside chassis first and the large flange closest to the centre of the vehicle.
9. Insert the nut plate and then insert M12 bolt and washer sets but do not screw the front most bolt past the end of the nut. **Leave bolts loose.**

FITTING PROCEDURE



10. Slide mount brackets into chassis ends oriented as shown with large flanges outboard.



11. Position the nut plates with three M12 nuts fitted into chassis brackets, so that all holes line up with existing bumper mount holes in outboard side of chassis. Fit three M12 x 40 bolt and washer sets per side. Do up finger tight only



NOTE: THIS STEP FOR 1500 CHASSIS ONLY

12. Insert the nut plate with two nuts inside the bracket and chassis to accept two M12 x 40 bolt sets in the tow hook position. Do up finger tight only.



13. Nip up all bolts, check that the brackets are parallel to each other and the front edge of bracket flange is vertical, if not adjust and retighten.

FITTING PROCEDURE



NOTE: THIS STEP FOR 2500/3500 CHASSIS ONLY

14. Drill with M10 drill bit and fit M10 bolt and washer sets and flange nuts to pin the flange of the reinforcing bracket to the side of the mount bracket body.



Warning: Drilling operations can result in flying metal debris, safety glasses should be



15. Fit grille outboard anchoring brackets as shown using existing screws.



16. Fit grille centre anchoring bracket as shown using existing screw.



17. Re-fit grille, use 6mm bolts, panel washers and flange nuts to secure tabs onto brackets in three places.
18. Reconnect and refit lights.

FITTING PROCEDURE



19. Remove lights from cartons and then remove screws and speed nuts from each light. These fasteners are not to be reused – new screws are supplied in the fitting kit.



20. Insert nylon nuts into square holes in light brackets inside wing area



21. Fit lights using screws supplied in fitting kit, taking note of RH and LH light bodies, they are different, marked LH or RH and must be placed on the correct side of bull bar (drain holes down).



22. Secure the number plate bracket using M6 bolts, flat washers and flange nuts. Attach the shorter side to the bullbar and the longer side to the number plate.

FITTING PROCEDURE



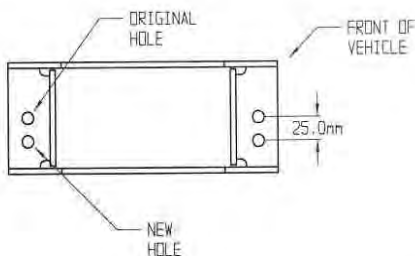
IF FITTING WINCH, CONTINUE ON THOUGH STEPS 23 TO 33, 35 & 37.

NOTE: From the factory the 15000lb winch handle should be in the position shown, allowing bottom spooling off of cable with the gearbox handle on the LHS when in bull bar. If your winch handle will not clear the bull bar when installed, undo the gearbox end screws. Lift the gearbox up to just clear locating lugs and rotate to correct position then retighten, checking that seals are undamaged and a draining hole is at bottom centre.

23. Remove cable retaining band and position cable loop so it will go through roller fairlead when it is placed in bull bar.



24. Fit control box bracket supplied using M6 bolts and flange nuts as shown.



25. Remove vertical rollers from RFL and set aside.

NOTE: On some models, the roller fair lead must be drilled prior to fitment.

26. Mark out as shown then using a 13.0 mm drill bit, drill two holes as shown in diagram.



Warning: Drilling operations can result in flying metal debris, safety glasses should be



27. Lay winch on a suitable support table with mount face up. With the help of an assistant, lay the bull bar, face up, onto the winch.

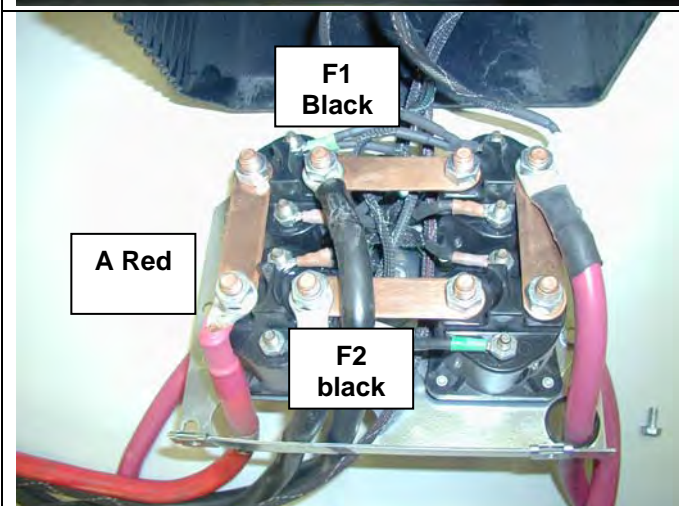
28. Position the RFL bracket into position into the viewer aperture and proceed to bolt up the winch with original fasteners supplied with winch.

29. Insert the vertical rollers into the RFL and fix in position with M16 bolt and nyloc nut sets.

30. Tighten all winch mount bolts.

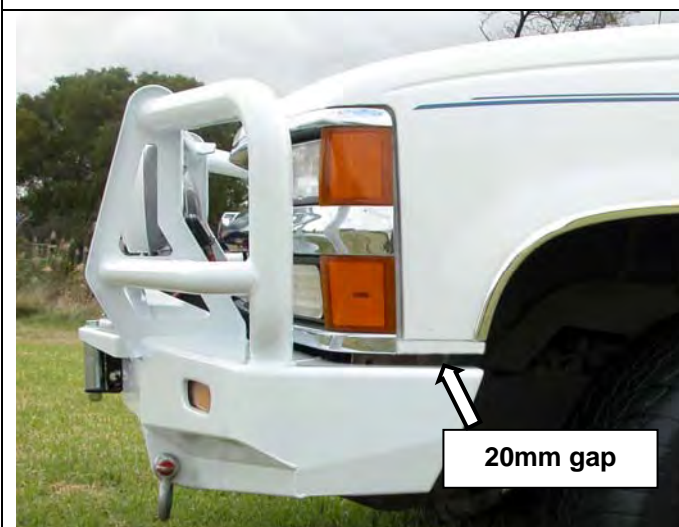


31. Fit control box to bracket.



32. Remove cover off control box. Supplied in fitting kit are 2 x black and 1 x red 460mm extended cables, mark these accordingly with the F1, F2 (black) and A (red) markings from original cables. Remove the 3 x *shortest* original heavy duty cables and connect the extended cables taking care that the connections are per original configuration.

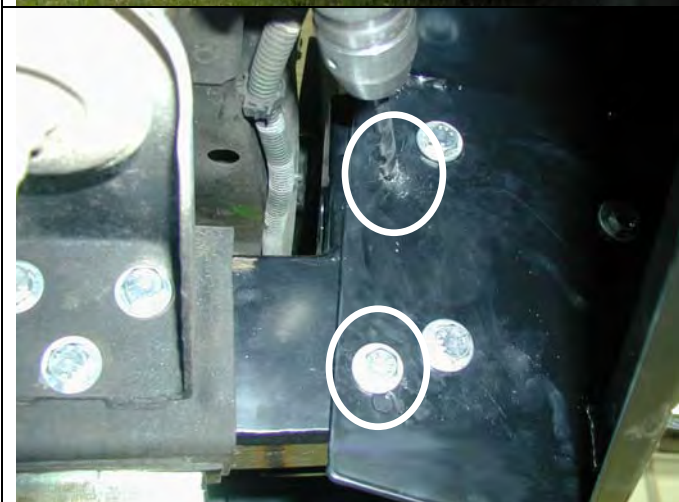
33. Route and connect the winch control box cables to the winch motor, **taking care that the cables are connected to the appropriate terminals**. Refer to the Warn handbook for additional information. Connect the long winch + & - cables to the vehicle after the bar is installed. Refer to the Warn winch manual for vehicle wiring instructions.



CAUTION: The next step is best achieved using a safe lifting device or with the help of an assistant. If a winch is fitted two assistants are recommended.

34. Fit the bull bar to the vehicle mount brackets. Use the M12 fasteners to secure it and make adjustments so there is approximately 20mm gap from under the grille to the top of the wing.

35. Tighten the M12 fasteners.



34. Drill and pin the bar to the mounts in 2 x places per side using M10 drill bit, as shown, then bolt up using M10 x 30 SEMS bolts and flange nuts.



Warning: Drilling operations can result in flying metal debris, safety glasses should be



If fitting with winch

35. With the winch cable through the roller fair lead. Mount the hook to the end of the cable.



36. Wire up the indicator and clearance lamp assemblies. Use scotch locks to splice cables to existing indicator and clearance lamp wiring and cable tie securely.

NOTE: Refer to the Warn winch manual for vehicle wiring instructions.

37. Ensure that electrical cables are installed well clear of sharp, hot or moving objects. Secure the winch cables to the vehicle and winch bumper with the supplied cable ties.

FITTED PRODUCT

