

ARB FITTING INSTRUCTIONS

ARB LANDROVER DISCOVERY TO MID 1999 SIDE STEP/RAILS

PRODUCT NUMBER 4432010

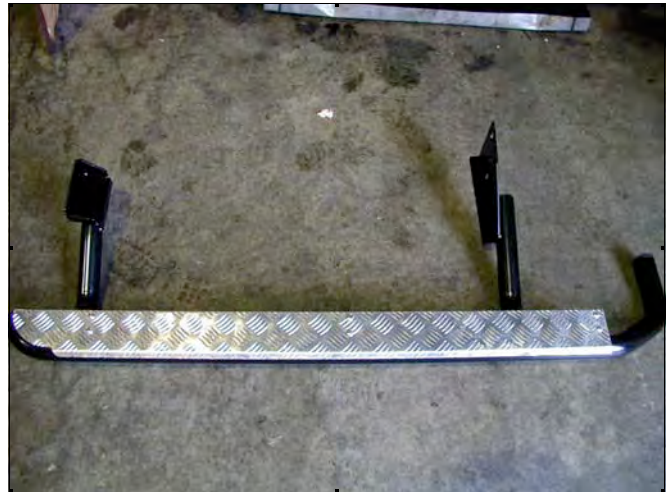
FITTING KIT NUMBER 6171142

USE	PART No	QTY	DESCRIPTION
CHECKER TOP TO STEP	3193500L	1	PLATE CHECKER TOP DISCOVERY
	3193500R	1	PLATE CHECKER TOP DISCOVERY
	6151200	12	M6 BOLT X 25mm DOME HEAD
	6151128	12	M6 FLANGE NUT
	4581084	12	M6 FLAT WASHER
SIDE STEP TO CHASSIS	3756239L	1	BRACKET ASSEMBLY MAIN CENTER
	3756239R	1	BRACKET ASSEMBLY MAIN CENTER
	6151040	10	BOLT M10 X 1.25 X 30
	6151133	10	NUT M10 X 1.25 X ZP
	4581040	20	WASHER FLAT 3/8" X 1 X 16
	4581048	10	WASHER SPRING M10
	6151100	4	BOLT UNC 1/2" X 1 1/2
	6151138	4	NUT UNC 1/2" ZP
	4581049	8	WASHER FLAT 1/2" X 1
	4581050	4	SPRING WASHER 1/2"
	271BLK	4	SIDERAIL RUBBER PLUG
	215637	2	ARB LOGO

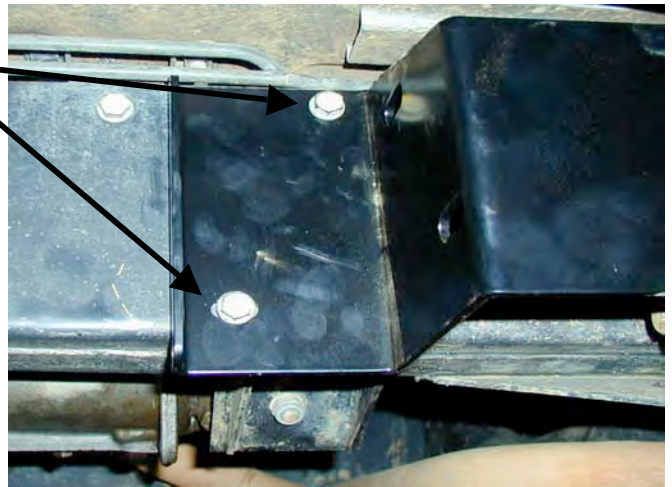
TOOLS REQUIRED

BASIC TOOL KIT, "G" CLAMP or "F" CLAMP, BLACK NEUTRAL CURE SILICON, DRILL, 10.5mm DRILL BIT.

1. Run a bead of silicon along the top of the step to eliminate vibration of the checker top.
2. Position checker top on step, aligning the bolt holes to those on the step brackets.
3. Using the M6 dome head bolts and starting at the front fasten tightly ensuring checker top and rail tubes align correctly.
4. Fit rubber plugs into front and rear of side rail.



5. Working on one side at a time, place a jack under the gearbox for support and remove the two bolts shown.
6. Attach the bracket (3756239L or R depending on side) using the original bolts removed previously. Tighten the two bolts.



7. Using the bracket as a template drill two 10.5mm holes and fasten with M10 hardware (do not tighten at this stage)



8. With the help of an assistant attach siderail to vehicle. Clamp the rear mounting bracket and align the mounting holes at the front with the mounting holes of the bracket previously installed. Secure the front of the rail using the ½” hardware supplied and tighten. Align the rail and tighten the bolts from step 7.



9. With the front of the rail attached and tightened and the rear clamped check alignment. When satisfied drill one 10.5mm hole in rear mounting location using the bracket as a template. Fasten using M10 hardware and recheck alignment. Drill second hole and again fasten with M10 hardware.



10. Using the 10.5mm drill, drill a hole in the front mounting bracket and fasten with M10 bolt, washer, spring washer and nut.
11. Repeat for the other side.

