



Installation Manual

2019Toyota RAV4

1" front leveling kit

Part # 51721

SS04252019

Part # 51721
2019Toyota RAV4
1" front leveling kit

<i>Part #</i>	<i>Description</i>	<i>Qty.</i>
51721-01	front strut spacer plate	2
M10-1.25FN	10mm x 1.25 fine nut	6
M10TOOTHWA	10mm star washer	6
51721INST	Instruction manual	1

Congratulations on your selection to purchase a Tuff Country EZ-Ride Suspension System. We at Tuff Country EZ-Ride Suspension are proud to offer a high quality product at the industries most competitive pricing. Thank you for your confidence in us and our product.

The Tuff Country EZ-Ride Suspension product safety label that is included in your kit box must be installed inside the cab in plain view of all occupants.

Make sure to use thread locker or loctite on all new and stock hardware associated with the installation of this suspension system.

After the completion of the installation, a front end alignment is required.

Important customer information:

Tuff Country EZ-Ride Suspension highly recommends that a qualified or a certified mechanic performs this installation.

It is the responsibility of the customer/installer to wear safety glasses at all times when performing this installation.

It is the customers/installers responsibility to read and understand all steps before installation begins. If you have any questions or concerns, please contact our technical department @ (801) 280-2777. Also, the OEM manual should be used as a reference guide.

This vehicles reaction and handling characteristics may differ from standard cars and/or trucks. Modifications to improve and/or enhance off road performance may raise the intended center of gravity. Extreme caution must be utilized when encountering driving conditions which may cause vehicle imbalance or loss of control. **DRIVE SAFELY!** Avoid abrupt maneuvers: such as sudden sharp turns which could cause a roll over, resulting in serious injury or death.

It is the customers responsibility to make sure that a re-torque is performed on all hardware associated with this suspension system after the first 100 miles of installation. It is also the customers responsibility to do a complete re-torque after every 3000 miles or after every off road use.

After the original installation, Tuff Country EZ-Ride Suspension also recommends having the alignment checked every 6 months to ensure proper tracking, proper wear on tires and front end components. Tuff Country EZ-Ride Suspension takes no responsibility for abuse, improper installation or improper suspension maintenance.

IMPORTANT!

This kit will NOT work on vehicles equipped with Air Suspension. If your vehicle is equipped with this type of suspension, please contact the company you purchased the lift kit from and arrange for returning the parts.

Limited lifetime warranty

Notice to all Tuff Country EZ-Ride Suspension customers: It is your responsibility to keep your original sales receipt! If failure should occur on any Tuff Country EZ-Ride Suspension component, your original sales receipt must accompany the warranted unit to receive warranty. Warranty will be void if the customer can not provide the original sales receipt. Do not install a body lift in conjunction with a suspension system. If a body lift is used in conjunction with any Tuff Country EZ-Ride Suspension product, your Tuff Country EZ-Ride Suspension WARRANTY WILL BE VOID. Tuff Country Inc. ("Tuff Country") suspension products are warranted to be free from defects in material and workmanship for life if purchased, installed and maintained on a non-commercial vehicle; otherwise, for a period of twelve (12) months, from the date of purchase and installation on a commercial vehicle, or twelve thousand (12,000) miles (which ever occurs first). Tuff Country does not warrant or make any representations concerning Tuff Country Products when not installed and used strictly in accordance with the manufacturer's instructions for such installation and operation and accordance with good installation and maintenance practices of the automotive industry. This warranty does not apply to the cosmetic finish of Tuff Country products nor to Tuff Country products which have been altered, improperly installed, maintained, used or repaired, or damaged by accident, negligence, misuse or racing. ("Racing is used in its broadest sense, and, for example, without regards to formalities in relation to prizes, competition, etc.) This warranty is void if the product is removed from the original vehicle and re-installed on that or any other vehicle. This warranty is exclusive and is in lieu of any implied warranty of merchantability, fitness for a particular purpose or other warranty of quality, whether express or implied, except the warranty of title. All implied warranties are limited to the duration of this warranty. The remedies set forth in this warranty are exclusive. This warranty excludes all labor charges or other incidental or consequential damages. Any part or product returned for warranty claim must be returned through the dealer of the distributor from whom it was purchased. Tuff Country reserves the right to examine all parts returned to it for warranty claim to determine whether or not any such part has failed because of defect in material or workmanship. The obligation of Tuff Country under this warranty shall be limited to repairing, replacing or crediting, at its option, any part or product found to be so defective. Regardless of whether any part is repaired, replaced or credited under this warranty, shipping and/or transportation charges on the return of such product must be prepaid by the customer under this warranty.

Before installation begins, Tuff Country EZ-Ride Suspension highly recommends that the installer performs a test drive on the vehicle. During the test drive, check to see if there are any uncommon sounds or vibrations. If uncommon sounds or vibrations occur on the test drive, uncommon sounds or vibrations will be enhanced once the suspension system has been installed. Tuff Country EZ-Ride Suspension highly recommends notifying the customer prior to installation to inform the customer of these issues if they exist.

This Suspension kit comes with (1) installation manual and some post installation procedure literature and it is the installers responsibility to make sure that the customer receives the post installation procedure literature. If a customer would like a copy of the installation manual, please have them visit our website at www.tuffcountry.com. Have them go to the customer care section to download these instructions. If you have any questions, please feel free to call us at (801) 280-2777.

Recommended tool selection:

- Torque wrench
- Standard socket set
- Standard wrench set
- Metric socket set
- Metric wrench set
- Tape Measure

With the vehicle sitting on a level surface and under its own weight, record ride height measurements by measuring from the center of the wheel hub up to the leading edge of the front fender. Record measurements below.

Pre Installation Measurements:

Driver side front : _____

Passenger side front : _____

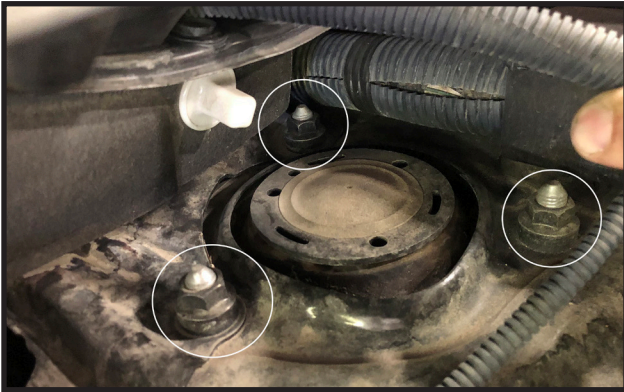
Post Installation Measurements:

Driver side front : _____

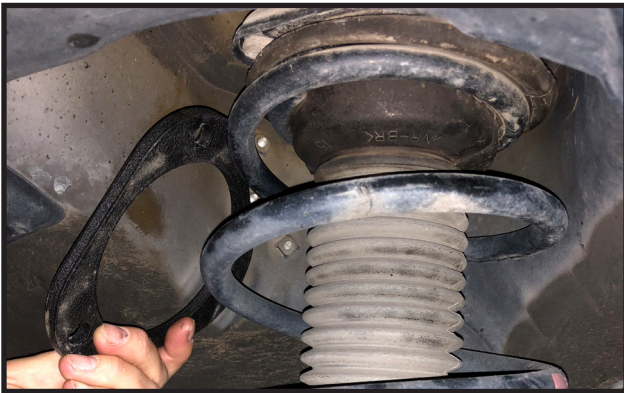
Passenger side front : _____

1. To begin installation, block the rear tires of the vehicle so that the vehicle is stable and can't roll backwards. Safely lift the front of the vehicle and support both the driver and passenger side with jack stands. Remove the tires and wheels from both sides.

2. Located under the hood in the engine compartment, are the upper strut mounts, remove the 3 nuts from both the driver side and the passenger side struts. **Special Note: The front suspension will drop out about 1 1/2" inches once these nuts have been removed.**



3. Locate the new strut spacer plates and install 1 each on top of the OE struts over the 3 studs. **Special Note: the Spacer will only go on one way, so if at first it does not line up with the studs, re-orient the spacer until it does.**



4. Once the new spacers have been installed, carefully raise both sides of the front suspension so that the upper strut studs go back through the original holes of the vehicle.

5. Locate the new 10mm star washers and 10mm fine nuts. Install the star washer first, then the nut, Torque to **30ft lbs.**



6. Re-install the tires and wheels and carefully lower the vehicle down to the ground and record your Post ride height measurements.

Congratulations, installation complete!

After the completion of this installation, Tuff Country EZ-Ride Suspension recommends taking the vehicle to an alignment shop and having the proper front end alignment performed.

Tuff Country Ez-Ride Suspension recommends that a complete re-torque is done on all the bolts associated with this suspension system. It is the customers responsibility to make sure that a re-torque is performed on all hardware associated with this suspension system after the first 100 miles of the installation. It is also the customers responsibility to do a complete re-torque after every 3000 miles or after every offroad use.