



# FITTING INSTRUCTIONS

Part Number: **5668010 & 5668020**  
Product **REAR PROTECTION STEP**  
Description:  
Suited to **HUMMER H3**  
vehicle/s:

## WARNING

### REGARDING VEHICLES EQUIPPED WITH SRS AIRBAG:

When installed in accordance with these instructions, the front protection bar does not affect operation of the SRS airbag.

### ALSO, NOTE THE FOLLOWING:

- ◆ This product must be installed exactly as per these instructions using only the hardware supplied.
- ◆ In the event of damage to any bull bar component, contact your nearest authorised ARB stockist. Repairs or modifications to the impact absorption system must not be attempted.
- ◆ Do not use this product for any vehicle make or model, other than those specified by ARB.
- ◆ Do not remove labels from this rear bar.
- ◆ This product or its fixing must not be modified in any way.
- ◆ The installation of this product may require the use of specialized tools and/or techniques
- ◆ It is recommended that this product is only installed by trained personnel
- ◆ These instructions are correct as at the publication date. ARB Corporation Ltd. cannot be held responsible for the impact of any changes subsequently made by the vehicle manufacturer
- ◆ During installation, it is the duty of the installer to check correct operation/clearances of all components
- ◆ Work safely at all times
- ◆ Unless otherwise instructed, tighten fasteners to specified torque

## ARB 4x4 ACCESSORIES

### Corporate Head Office

42-44 Garden St  
Kilsyth, Victoria  
AUSTRALIA 3137

Tel: +61 (3) 9761 6622  
Fax: +61 (3) 9761 6807

Australian enquiries  
North & South American enquiries  
Other international enquiries

sales@arb.com.au  
sales@arbusa.com  
exports@arb.com.au

**www.arb.com.au**

# GENERAL CARE AND MAINTENANCE

By choosing an ARB Bar, you have bought a product that is one of the most sought after 4WD products in the world. Your bar is a properly engineered, reliable, quality accessory that represents excellent value. To keep your bar in original condition it is important to care and maintain it following these recommendations:



- Prior to exposure to the weather your bar should be treated to a Canuba based polish on all exposed surfaces. It is recommended that this is performed on a six monthly basis or following exposure to salt, mud, sand or other contaminants.
- As part of any Pre Trip Preparation, or on an annual basis, it is recommended that a thorough visual inspection of the bar is carried out, making sure that all bolts and other components are torqued to the correct specification. Also check that all wiring sheaths, connectors, and fittings are free of damage. Replace any components as necessary. This service can be performed by your local authorized ARB Stockist.

## FITTING REQUIREMENTS

### REQUIRED TOOLS FOR FITMENT OF PRODUCT:

BASIC TOOL KIT	
AIR HACK-SAW OR SIMILAR	

### HAVE AVAILABLE THESE SAFETY ITEMS WHEN FITTING PRODUCT:

Protective eyewear		Hearing protection	
--------------------	---	--------------------	---

**NOTE:** 'WARNING' notes in the fitting procedure relate to OHS situations, where to avoid a potentially hazardous situation it is suggested that protective safety gear be worn or a safe work procedure be employed. If these notes and warnings are not heeded, injury may result.

### FASTENER TORQUE SETTINGS:

SIZE	Torque Nm	Torque lbft
M6	9Nm	4lbft
M8	22Nm	16lbft
M10	44Nm	32lbft
M12	77Nm	57lbft

# NOTE: MUD LAPS TO BE PURCHASED SEPERATELY

<b>PARTS LISTING</b>			
<b>APPLICATION.</b>	<b>PART NO.</b>	<b>QTY</b>	<b>DESCRIPTION</b>
<b>FIT CAGE NUTS TO REAR BAR FIT REAR BAR TO TOWBAR</b>	6151304	6	NUT M10 CAGE
	5668010	1	H3 REAR BAR FLARED
	5668020	1	H3 REAR BAR NON-FLARED
	6151423	6	SCREW M10 X 1.5 B/HEAD STAINLESS
	4584300	6	WASHER SPRING M10 STAINLESS
	4584299	6	WASHER FLAT M10 STAINLESS
<b>FIT OUTER WING BRACKETS</b>	3757662L	1	BRACKET OUTER WING LHS
	3757662R	1	BRACKET OUTER WING RHS
	6151357	6	BOLT M10 X 1.5 X 30 SEMS ASSY
	6151340	2	BOLT M12 X 1.75 X 50
	4581050	2	WASHER SPRING 1/2
	5481049	2	WASHER FLAT 1/2
<b>FIT LICENSE PLATE TO SPARE WHEEL</b>	6172419	1	LICENSE PLATE RELOCATION KIT
	3757512	1	BRACKET LICENSE PLATE
	3757667	1	BRACKET LICENSE PLATE MOUNT
	6151021	2	BOLT M8 X 1.25 X 20
	6151017	2	BOLT M6 X 1 X 16
	6151281	2	SCREW M5 X 12 PAN HEAD
	4581046	2	WASHER SPRING M8
	4581044	2	WASHER FLAT M8 X 17
	6151046	2	WASHER FLAT 6MM
	6151303	2	NUT M8 CAGE
	6151128	2	NUT M6 FLANGE
	86060BL	1	LAMP LICENSE PLATE
	6821199	1	LOOM JK LICENSE PLATE
	6821135	1	7MM CONDUIT SPLIT TUBING
	180701	2	SCOTCH LOCK
	6821112	4	CABLE TIE
	6821132	1	GROMMET
<b>FIT GRIP TAPE TO BAR</b>	6781417	1	GRIP TAPE 600MM
<b>FIT OPTIONAL MUD FLAPSTO BAR</b>	6151228	8	BOLT M6 X 30 BLACK
	4581084	10	WASHER FLAT M6 PANEL
	6151173	8	NUT M6 FLANGE BLACK

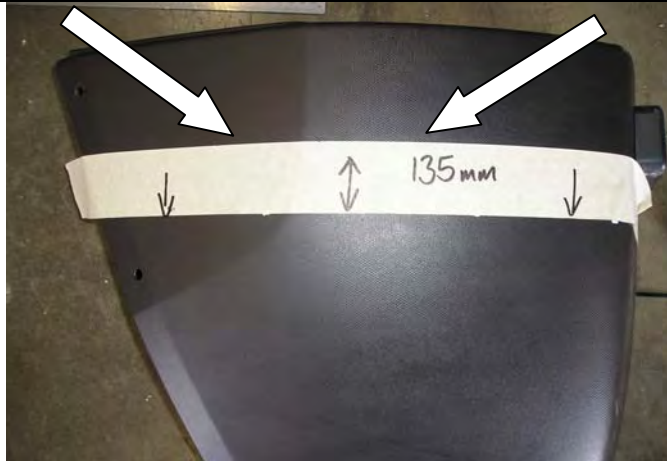
## FITTING PROCEDURE



1. Unplug license plate light from rear bumper to chassis. Remove six bolts holding the towbar to the chassis.
2. Once removed unbolt and remove license plate light and top plastic cover.
3. Remove bolts holding towbar to bumper and separate.



4. Remove bumperettes from vehicle.
5. **Note: There are two 6mm bolts located in the flared guard cavity behind the quarter panel.**



6. Measure 135mm down from the top horizontal plane of the bumperette. Make a few marks along the length and join with tape as shown. This will be the cut line.

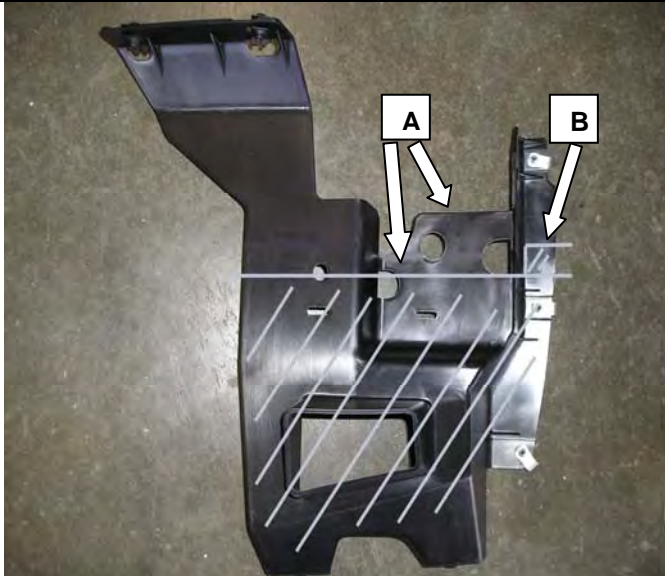


7. Using an air hacksaw or similar cut the bumperette along the marked line. Clean up any burrs when done. Repeat for RHS.
8. If the vehicle has secondary flares fitted cut these to match the bumperette also.



**Warning: Cutting operations can result in flying debris, safety glasses should be worn.**

## FITTING PROCEDURE



9. Measure 55mm as shown in the diagram (arrows A). This is the main cut for the flare mount.
10. Shown by arrow B measure up 30mm from the main cut line at the rear of the mount and cut this small section away also.



11. The picture shows the end result. Clean up all burrs and install on vehicle. Repeat for RHS.



12. If secondary flares are fitted drill an 8mm hole through the flare and bumperette and secure with one of the discarded push-in clips. Repeat for RHS.
13. Re-fit bumperettes and mounts back onto vehicle.





14. Place the towbar on the vehicle and secure using two original bolts in the front mounts. Finger tighten only.



15. Make sure the bottom mounts are horizontal, if not tap with a hammer until they look as per the picture.



16. With the help of a friend lift the bar onto the vehicle and secure with stainless hardware.



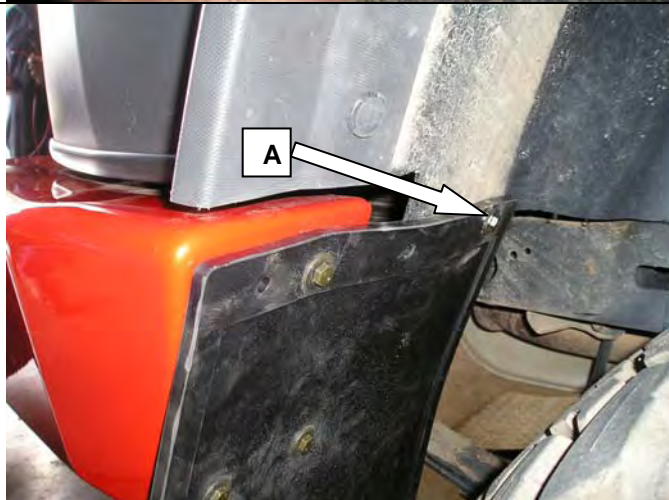
17. Install wing brackets to vehicle using three M10 SEMS bolts, one M12 x 50 bolt, flat washer and spring washer, and one original towbar bolt. The bottom towbar bolt can also be fitted.
18. Adjust the bar so there is an even gap with the bumperettes and tighten all bolts. Fit tow hook cover plate and tow hook to vehicle. ( See inset picture.)



19. **Cut the inner guard to clear the rear bar.**



20. **(Optional). Picture shows the inner guard viewed from the rear. Measure down 50mm from the top edge of the rear bar and cut all the way along horizontally.**



21. **If mud flaps are to be fitted use the template supplied and drill holes in flap to 7mm. Secure to the three holes in the bar by using black 6mm hardware.**
22. **Drill a 7mm hole through the inner edge of the mud flap and through the inner guard as shown by arrow A. Secure using one black M6 bolt, two flat washers and flange nut.**



23. **Clean lower edge of bumperette with grease and wax remover and apply rubber extrusion as shown.**

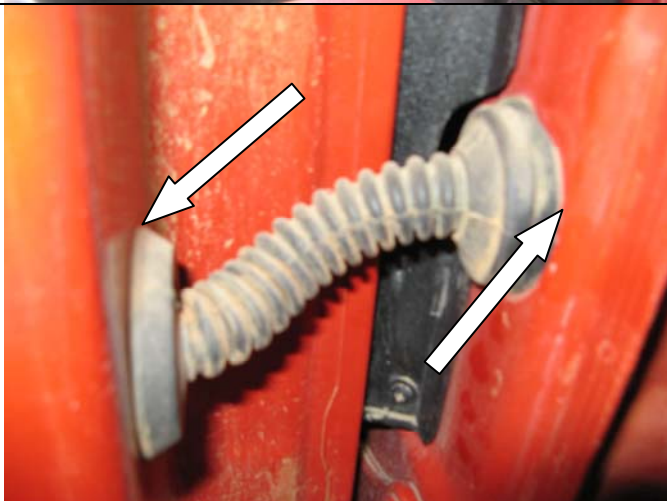




24. **Make sure bar surface is clean. Cut grip tape to shape and apply to rear bar.**



25. **Remove spare wheel from vehicle. Run the licence plate loom through the hole in the wheel mount and into the vent as shown in the picture.**

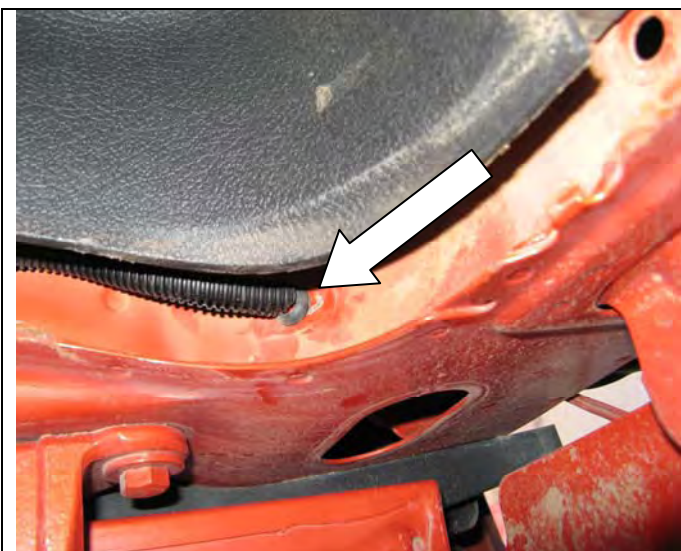


26. **Remove the grommet from the door and vehicle face and feed the loom through. The use of some lubricant may assist.**



27. **Remove rear trim including sealing rubber from vehicle as shown.**





28. **Unclip left hand trim panel to gain more access. As per the picture, drill a 14MM hole in panel. Clean all burrs and paint. Mount the rubber grommet from fitting kit into this hole.**



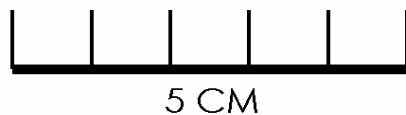
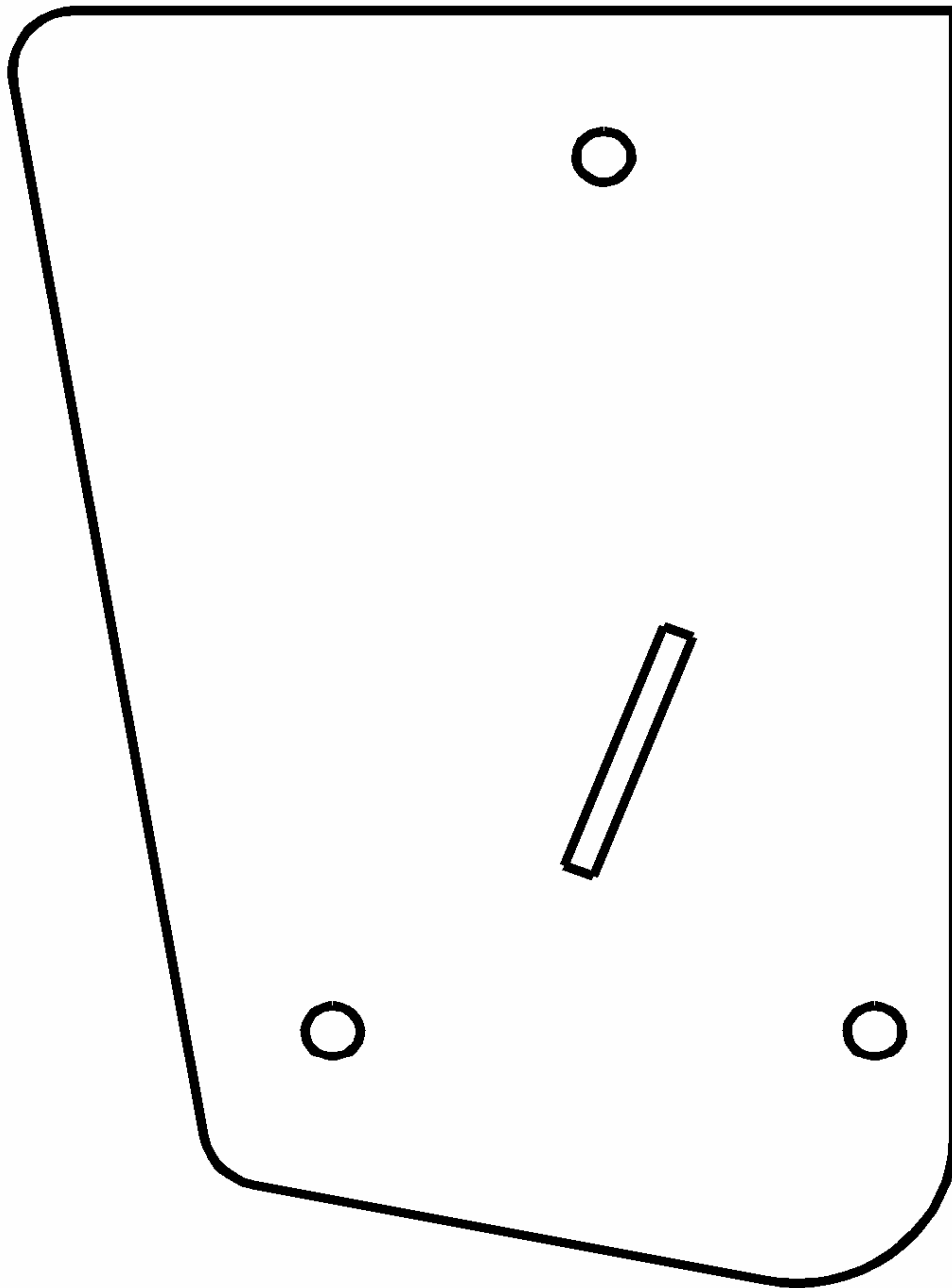
29. **Locate the hole on underside of vehicle near the rear body mount. Run the loom through here making sure the wires are covered with tubing.**



30. **Locate the plug for the license plate lamp and attach new loom using scotch locks supplied.**

## FITTED PRODUCT





**MUDFLAP TEMPLATE RHS SHOWN  
FLIP FOR LHS**