



SIGNATURE OF QUALITY

AUTOMOTIVE PRODUCTS, INC.

INSTALLATION INSTRUCTIONS

CLASS III RECEIVER HITCH
APPLICATIONS: 2003-2016 DODGE RAM 1500
APP PART # 65-1015

ITEM	QUANTITY	DESCRIPTION	TOOLS NEEDED
1	1	CLASS 3 HITCH ASSEMBLY	TORQUE WRENCH
2	2	M14 BOLT PLATE	21MM SOCKET
3	2	M14 HEX NUT	12MM HEX SOCKET
4	2	M14 FLAT WASHER	
5	2	M14 LOCK WASHER	
6	2	M14 FISH WIRE TOOL	
7	1	M20 COUNTERSUNK FLAT HEAD SOCKET CAP SCREW	
8	1	BUMPER CAP	

WARNING: Never exceed the capacity ratings shown on the receiver hitch or the tow vehicle. See your vehicle's owners guide for towing guidelines.

1. Remove contents from box, verify if all parts listed are present and free from damage. Carefully read and understand all instructions before attempting installation. **Failure to identify damage before installation could lead to a rejection of any claim.**
2. Remove OEM bumper cap and set aside. Figure 1
3. Install the M20 countersunk flat head socket cap screw (Item 7) through the opening in the bumper into the top threaded hole in the hitch assembly (Item 1) Figures 2 & 3
4. Insert the threaded end of the fish wire tool into the hole in the rear of the hitch assembly & frame crossbar behind the rear bumper, and feed it out the larger hole at the end of the frame crossbar. Repeat for both sides. Figures 4 & 5
5. Attach the M14 bolt plates (Item 2) to threaded end of fish wire tool. Figure 6
6. Feed the M14 bolt plates (Item 2) through frame crossbar hole and hitch assembly bracket hole. Figure 7
7. Fasten the hitch assembly (Item 1) with the M14 bolt plates (Item 2) using the M14 flat washers (Item 4), M14 lock washers (Item 5), and a M14 hex nuts (Item 3). Figure 7
8. Level and align hitch assembly and tighten all hardware at this time Figure 8. Torque M14 hardware to 90-100 ft-lbs, torque M20 hardware to 250 ft-lbs.
9. Re-install OEM bumper cap. Note: If OEM bumper cap does not fit then use provided bumper cap (Item 8). Figure 9

NOTICE: This product complies with all safety specifications and requirements defined for V.E.S.C. regulation V-5 & SAE J684

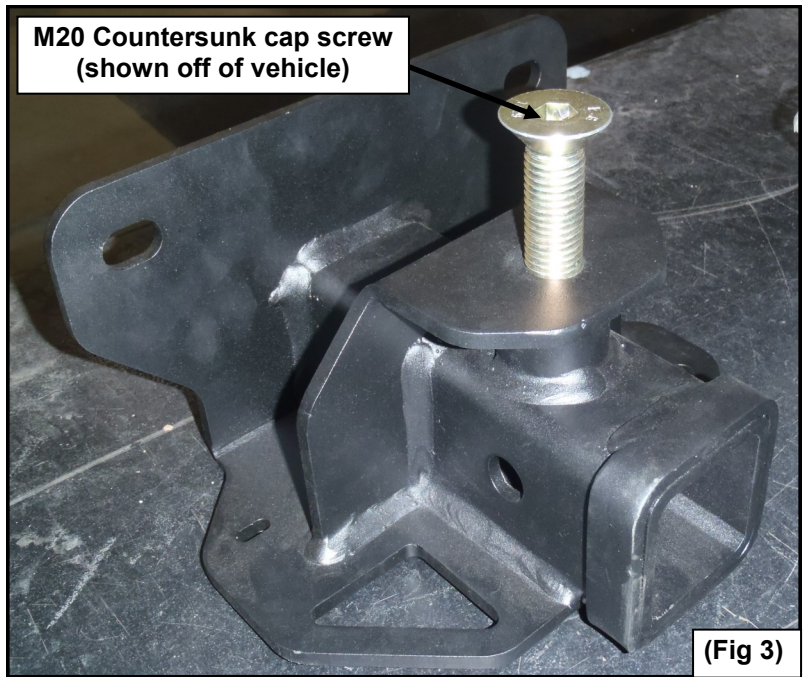
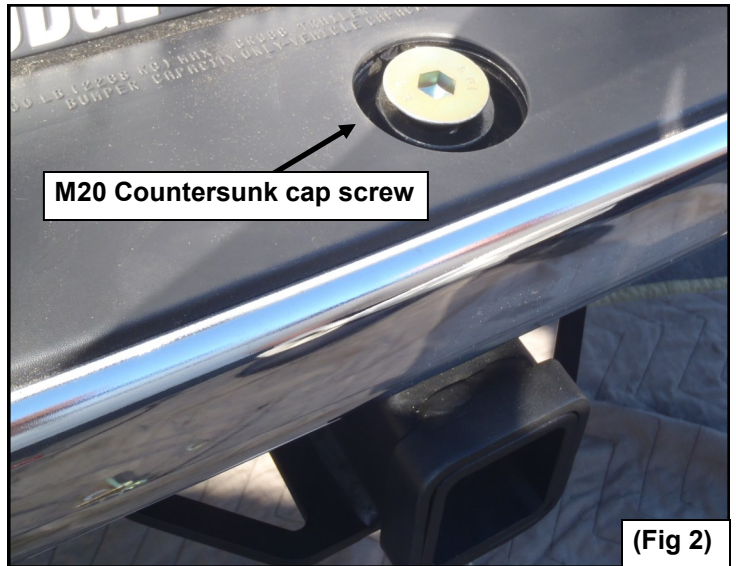
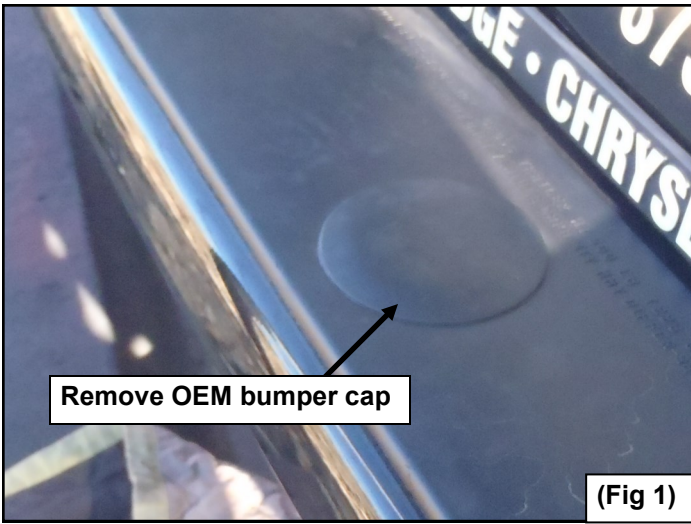
CARE INSTRUCTIONS

- BLACK FINISHES SHOULD BE CLEANED WITH MILD SOAP AND WATER.



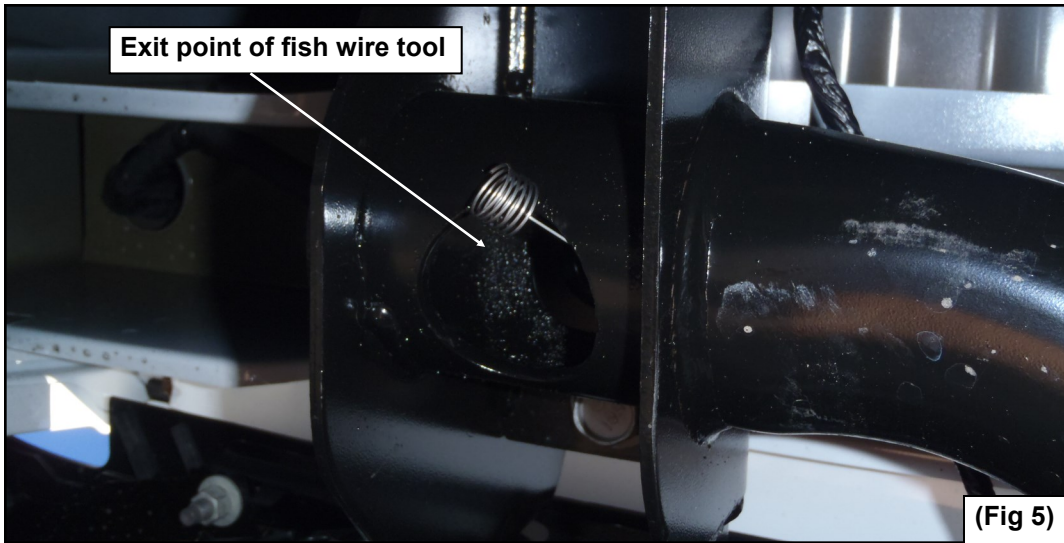
Westin Automotive Products, Inc.
320 Covina Blvd
San Dimas, Ca. 91773

Thank you for choosing Westin products
for additional installation assistance please call
Customer Service (800) 793-7846
www.westinautomotive.com

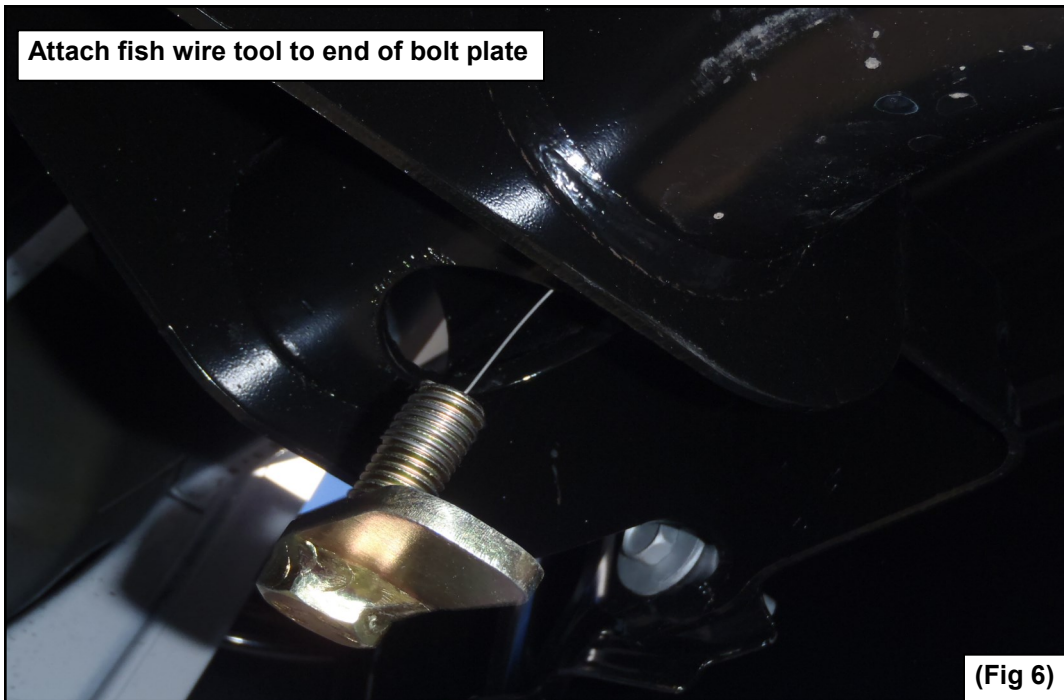


Westin Automotive Products, Inc.
320 Covina Blvd
San Dimas, Ca. 91773

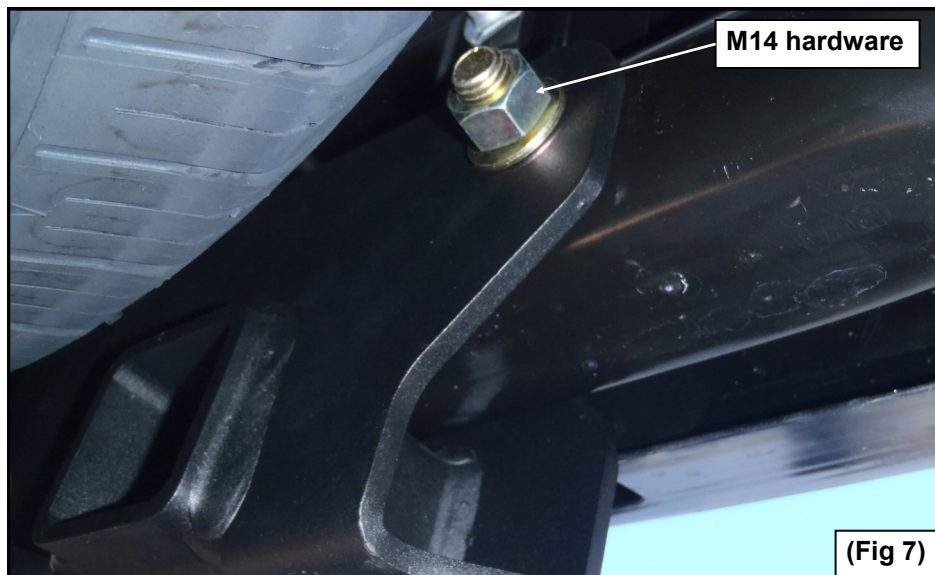
Thank you for choosing Westin products
for additional installation assistance please call
Customer Service (800) 793-7846
www.westinautomotive.com



(Fig 5)



(Fig 6)



(Fig 7)



Westin Automotive Products, Inc.
320 Covina Blvd
San Dimas, Ca. 91773

Thank you for choosing Westin products
for additional installation assistance please call
Customer Service (800) 793-7846
www.westinautomotive.com



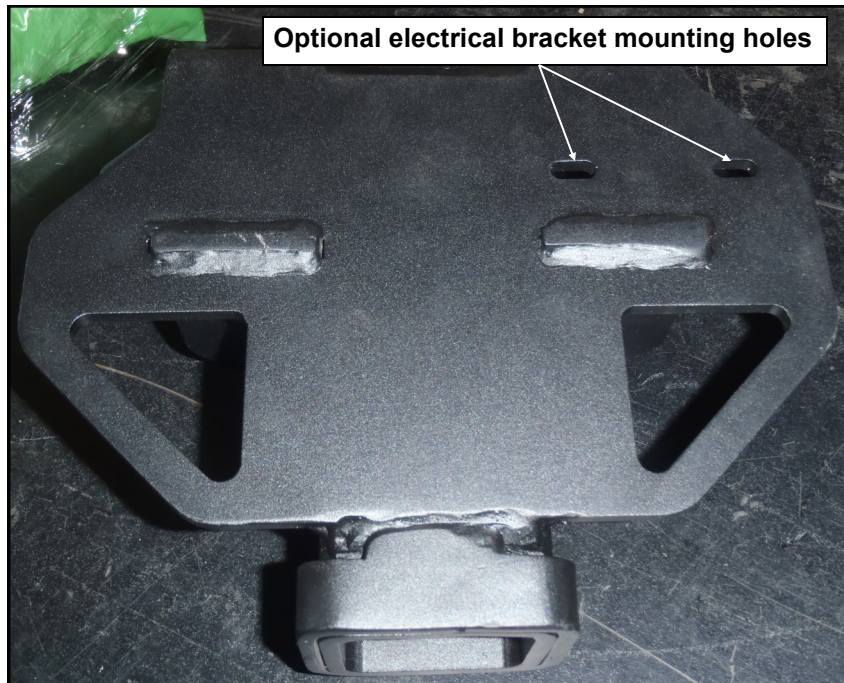
Hitch assembly installed

(Fig 8)



Re-install bumper cap
(Note: If bumper cap
does not fit then use
provided bumper cap
instead (Item 8))

(Fig 9)



Optional electrical bracket mounting holes



AUTOMOTIVE PRODUCTS, INC.
San Dimas, California

WARNINGS & NOTICES FOR THE INSTALLATION OF WESTIN TOWING PRODUCTS - CLASS III RECEIVER HITCH

NOTICE

Westin Receiver Hitches are designed to accommodate a 2" - square receiver draw bar rated for class III/IV towing. Closely follow all Westin Installation Instructions for the proper installation of product. Improper installation can result in death, serious injury, and/or product and vehicle damage. In the operation of these products, it is imperative to observe precautions for your personal safety and the safety of others.

WARNING

Failure to follow these instructions could lead to death, personal injury, and / or property damage.

FASTENERS:

All Westin supplied fasteners must be utilized and installed in accordance with the installation instructions and apply torque to the specifications as defined. **DOUBLE CHECK ALL FASTENERS BEFORE INITIAL USE, AND PERIODICALLY IN THE FUTURE TO ENSURE PROPER FUNCTION AND SAFETY.**

DRILLING:

Most Westin products do not require drilling for installation. If drilling is defined as required, use caution when drilling a vehicle. **FAILURE TO REVIEW AN AREA TO BE DRILLED MAY RESULT IN PERSONAL INJURY AND/OR INJURY TO OTHERS AS WELL AS VEHICLE DAMAGE.**

EYE PROTECTION:

ALWAYS WEAR SAFETY GLASSES OR GOGGLES DURING THE INSTALLATION PROCESS TO AVOID PERSONAL INJURY.

MAXIMUM TOWING/CARRYING CAPACITY:

The Westin Receiver Hitches will have a visible tow rating label affixed directly on the product. User should never exceed the vehicle manufacturers maximum tow and weight rating regardless of the capacity of the hitch. **FAILURE TO FOLLOW THESE GUIDELINES WILL VOID THE WESTIN WARRANTY AND MAY RESULT IN PERSONAL INJURY AND/OR INJURY TO OTHERS AS WELL AS VEHICLE DAMAGE.**



Westin Automotive Products, Inc.
320 Covina Blvd
San Dimas, Ca. 91773