

ROUGH COUNTRY

SUSPENSION SYSTEMS®

JEEP 2019-21 JL/JT Hood Assist

Thank you for choosing Rough Country for all your vehicle needs.

Please read instructions before beginning installation. Check the kit hardware against the kit contents shown below. Be sure you have all needed parts and know where they go.

If question exist, please call us @1-800-222-7023. We will be happy to answer any questions concerning this product.

Check all fasteners for proper torque. Check to ensure for adequate clearance between all components.

Periodically check all hardware for tightness.

Kit Contents:

Dr Hood Assist Bracket x1
Pass Hood Assist Bracket x1
Gas Cylinders x2

Tools Needed:

3/4" Wrench or Socket
15mm Wrench or Socket
Nutsert Tool

Hardware Included:

5/16" Nut Insert x2
5/16" Flat Washers x2
5/16" Nuts x2
Studs x4



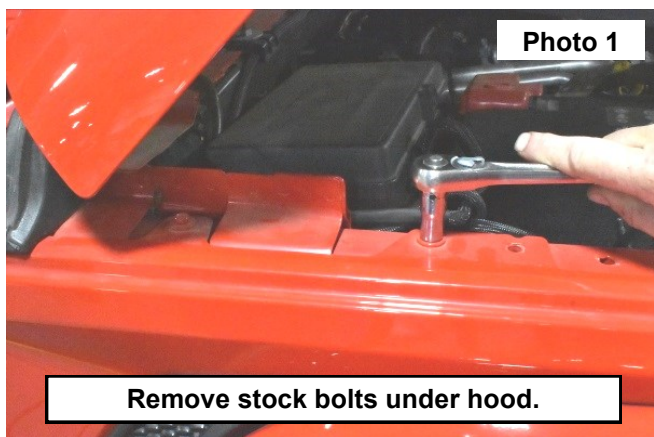
Torque Specs:

Size	Grade 5	Grade 8	Size	Class 8.8	Class 10.9
5/16"	15 ft/lbs	20ft/lbs	6MM	5ft/lbs	9ft/lbs
3/8"	30 ft/lbs	35ft/lbs	8MM	18ft/lbs	23ft/lbs
7/16"	45 ft/lbs	60ft/lbs	10MM	32ft/lbs	45ft/lbs
1/2"	65 ft/lbs	90ft/lbs	12MM	55ft/lbs	75ft/lbs
9/16"	95 ft/lbs	130ft/lbs	14MM	85ft/lbs	120ft/lbs
5/8"	135ft/lbs	175ft/lbs	16MM	130ft/lbs	165ft/lbs
3/4"	185ft/lbs	280ft/lbs	18MM	170ft/lbs	240ft/lbs

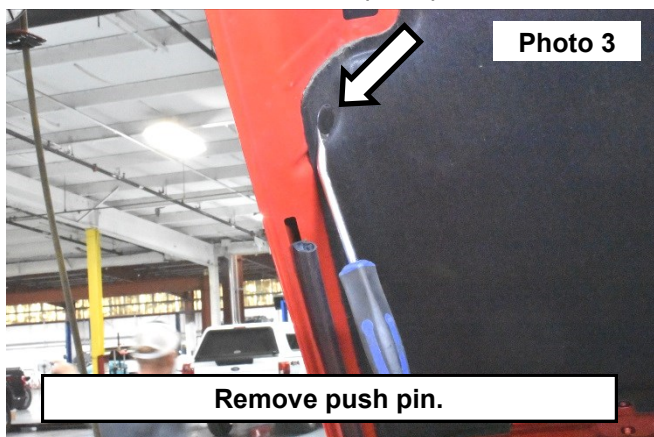


INSTALLATION INSTRUCTIONS

1. Remove the stock bolts under the hood using a 10mm socket/wrench. **See Photo 1.**
2. Install the Dr and Pass side hood assist brackets using the stock hardware. **See Photo 2.**



3. Remove push pin using a pry tool. **See Photo 3.**
4. Cut out the area around the push pin hole. **See Photo 4.**

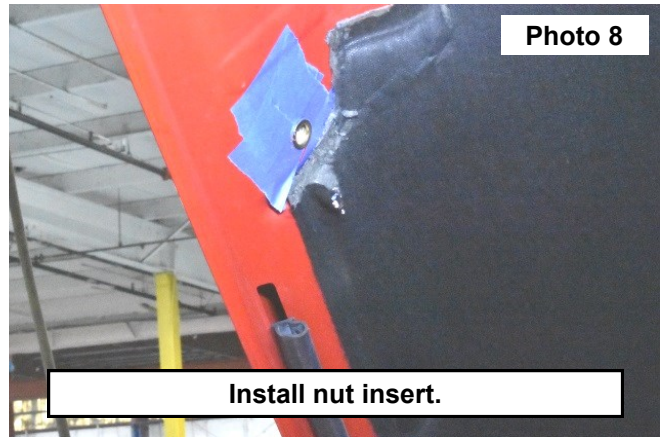


5. Place tape around the push pin hole and drill using a 17/32" drill bit. **See Photo 5 and Photo 6.**

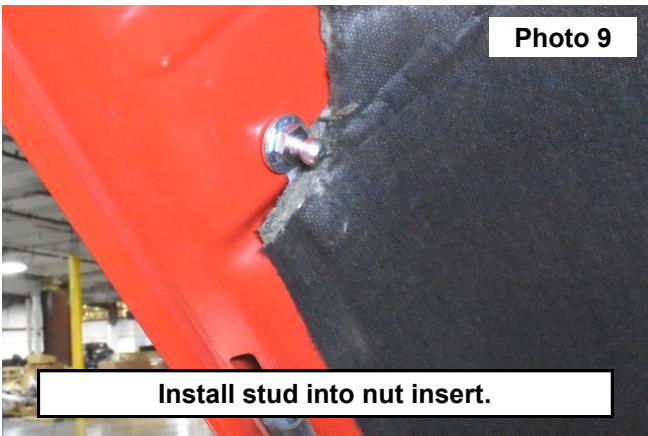
▲ NOTICE Be careful not to drill too deep to avoid damaging the hood.



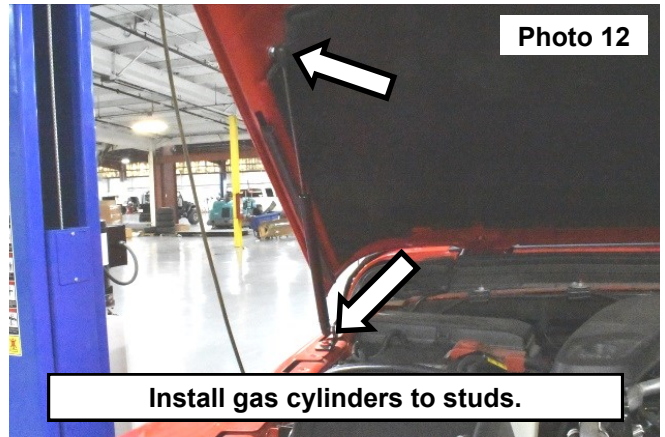
6. Install nut insert using a nutsert tool. See Photo 7 and Photo 8.



7. Install the supplied stud and 5/16" flat washer into the nut insert using a 13mm wrench. See Photo 9.
8. Install the supplied stud and 5/16" nut into the hood assist bracket using two 13mm socket/wrenches. See Photo 10.



9. Install the gas cylinders to the studs. See Photo 11 and Photo 12.



By purchasing any item sold by Rough Country, LLC, the buyer expressly warrants that he/she is in compliance with all applicable, State, and Local laws and regulations regarding the purchase, ownership, and use of the item. It shall be the buyers responsibility to comply with all Federal, State and Local laws governing the sales of any items listed, illustrated or sold. The buyer expressly agrees to indemnify and hold harmless Rough Country, LLC for all claims resulting directly or indirectly from the purchase, ownership, or use of the items.

