



CAN-AM 2020 Maverick X3 Front Winch Mount

Thank you for choosing Rough Country for all your vehicle needs.

Please read instructions before beginning installation. Check the kit hardware against the kit contents shown below. Be sure you have all needed parts and know where they go.

If question exist, please call us @1-800-222-7023. We will be happy to answer any questions concerning this product. Check all fasteners for proper torque. Check to ensure for adequate clearance between all components. Periodically check all hardware for tightness.

KIT CONTENTS:

Winch Mount x1

TOOLS NEEDED:

10mm Socket/Wrench
18mm Socket/Wrench
T30 Torx bit

HARDWARE INCLUDED:

6MM Button Head Bolts x2
6MM Flat Washers x4
6MM Nylock Nuts x2



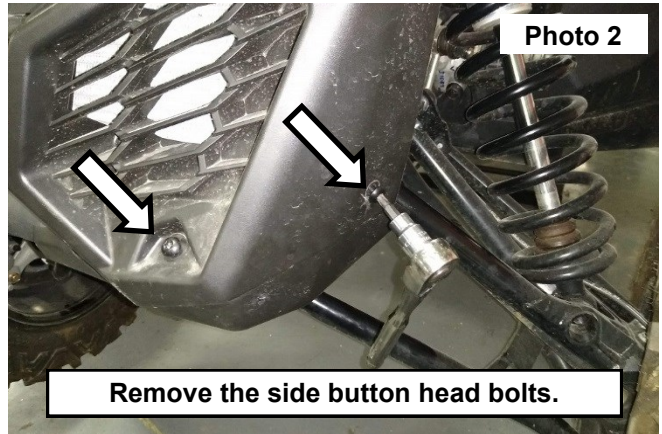
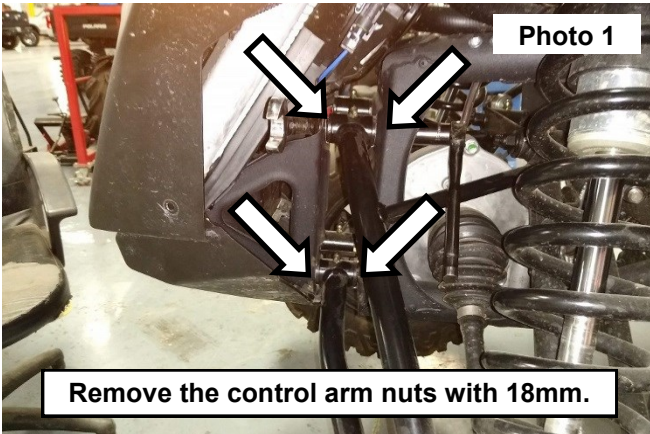
Torque Specs:

Size	Grade 5	Grade 8	Size	Class 8.8	Class 10.9
5/16"	15 ft/lbs	20ft/lbs	6MM	5ft/lbs	9ft/lbs
3/8"	30 ft/lbs	35ft/lbs	8MM	18ft/lbs	23ft/lbs
7/16"	45 ft/lbs	60ft/lbs	10MM	32ft/lbs	45ft/lbs
1/2"	65 ft/lbs	90ft/lbs	12MM	55ft/lbs	75ft/lbs
9/16"	95 ft/lbs	130ft/lbs	14MM	85ft/lbs	120ft/lbs
5/8"	135ft/lbs	175ft/lbs	16MM	130ft/lbs	165ft/lbs
3/4"	185ft/lbs	280ft/lbs	18MM	170ft/lbs	240ft/lbs

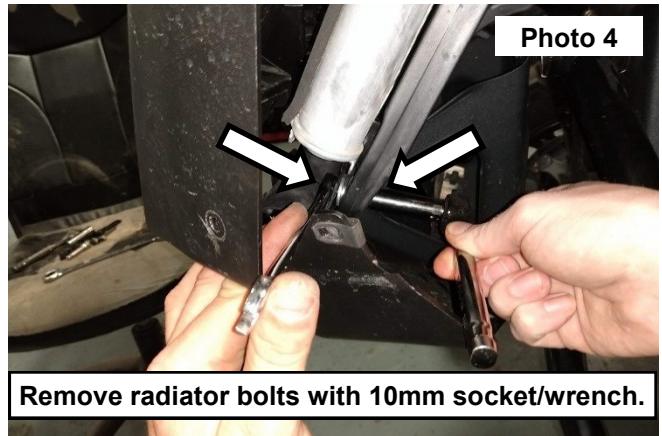
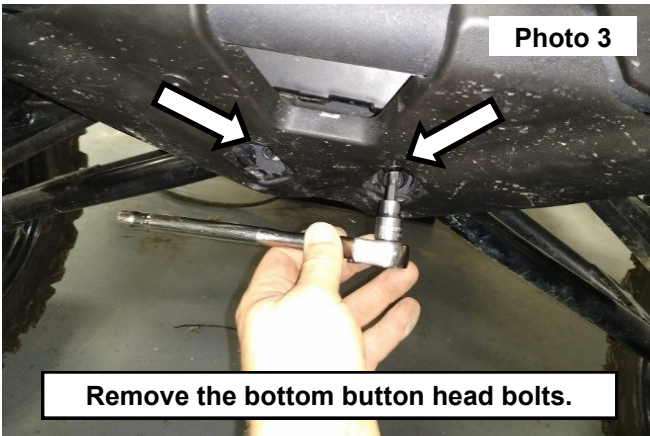


INSTALLATION INSTRUCTONS

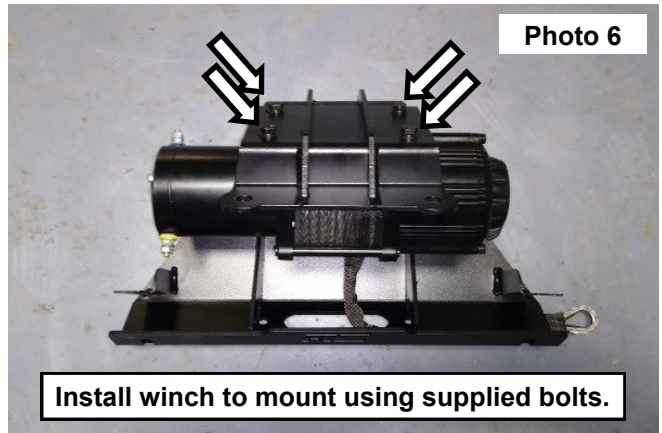
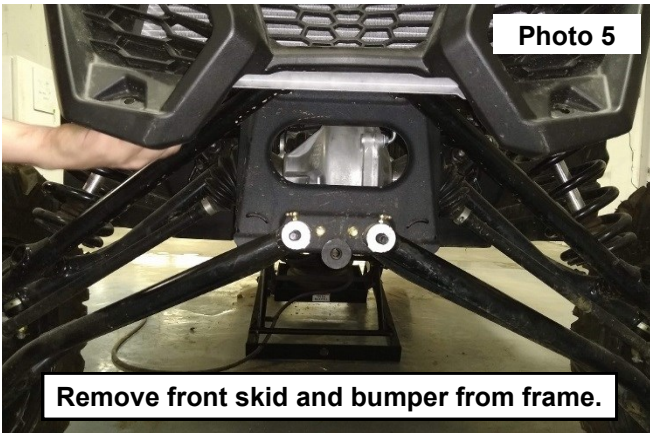
1. Remove the control arm nuts on the driver and passenger side with a 18mm socket/wrench. **See Photo 1.**
2. Remove the side button head bolts with a T30 torx bit. **See Photo 2.**



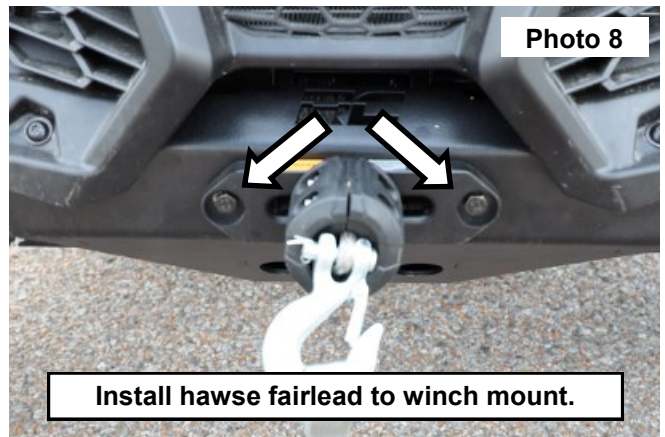
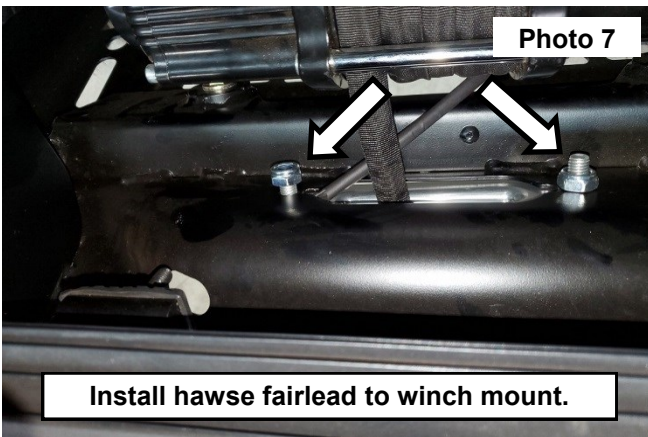
3. Remove the bottom button head bolts with a T30 torx bit. **See Photo 3.**
4. Remove the bolts from the radiator with a 10mm socket/wrench. **See Photo 4.**



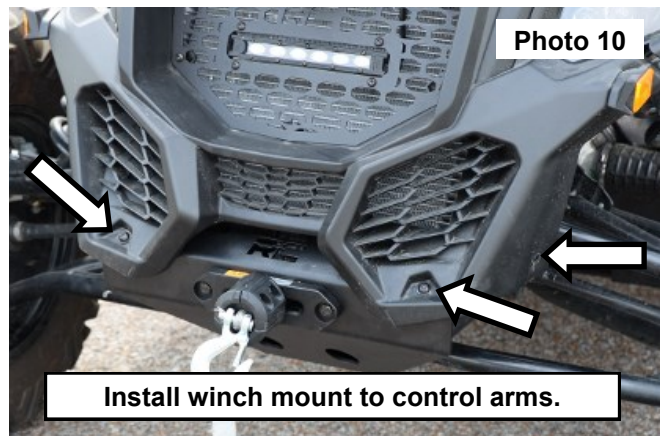
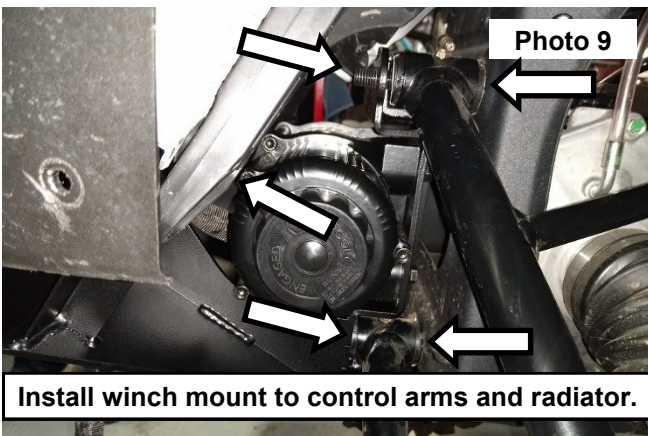
5. Remove the front skid and front bumper from the frame. **See Photo 5.**
6. Install the winch to the winch mount using the bolts supplied with the winch. **See Photo 6.**



7. Install the hawse fairlead using the bolts and nuts supplied with the winch. **See Photo 7 and Photo 8.**



8. Install the winch mount to the control arms and radiator reusing the stock hardware. **See Photo 9.**
9. Tighten bumper to winch mount with stock hardware. **See Photo 10.**



10. Wire the winch to the UTV according to the supplied instructions in the winch kit.



By purchasing any item sold by Rough Country, LLC, the buyer expressly warrants that he/she is in compliance with all applicable, State, and Local laws and regulations regarding the purchase, ownership, and use of the item. It shall be the buyers responsibility to comply with all Federal, State and Local laws governing the sales of any items listed, illustrated or sold. The buyer expressly agrees to indemnify and hold harmless Rough Country, LLC for all claims resulting directly or indirectly from the purchase, ownership, or use of the items.

