



**Before returning this product
to the store of purchase**

Contact Dee Zee if you experience the following problems:

- Missing Parts
- Installation Problems/Questions
- Warranty Questions

1.800.779.2102

Hours of operation: 8am - 5pm CST, Mon-Friday

Review complete warranty policy and register your product at:

www.deezee.com/warranty.php

INSTALLATION INSTRUCTIONS

SIDE BAR PART # DZ 370301/370302/370303
99-08 FORD F250 / F350 SUPER CAB & SUPER CREW

PARTS LIST:

1	Passenger Side Bar	8	10mm Clip Nuts
1	Driver Side Bar	16	10-1.50mm x 40mm Hex Head Bolts
4	Mounting Brackets	24	10mm Flat Washers
4	1/2"-13*2" Hex Head Bolts	16	10mm Lock Washers
4	1/2" Lock Washers	8	10mm Hex Nuts
4	1/2" Flat Washers		

PROCEDURE:

1. REMOVE CONTENTS FROM BOX. VERIFY ALL PARTS ARE PRESENT. READ INSTRUCTIONS CAREFULLY.
2. Locate the driver side front and rear mounting points under the vehicle on the pinch weld.
3. Install the 10mm Clip Nuts (*Figure 1*). **NOTE:** The rear mount will required (2) Clip Nuts and the front only (1).
4. Loosely attach the Driver Side Brackets to pinch weld using the included (2) 10-1.50mm x 40mm Hex Head Bolts, (4) 10mm Flat Washers, and (2) 10mm Lock Washers (2 & 3)).
NOTE: Pinch weld and side panel holes on the bracket must be Horizontal when installing.
5. Loosely attach the upper side of the Mounting Brackets to already installed Clip Nuts by using (2) 10-1.50mm x 40mm Hex Head Bolts, (2) 10mm Flat Washers, and 10mm Lock Washers on each Mounting Bracket (*Figure 2 & 3*)..
6. Place Side Bar into position and loosely attach it to Mounting Brackets using the included (2) 1/2"Hex Head Bolts, (2) 1/2" Flat Washers, and (2) 1/2" Lock Washers (*Figure 4 & 5*). **NOTE:** Side Bar mounting hole on the brackets must be vertical.
7. Level and align Side Bar with the side of the vehicle then tighten all hardware at this time.
8. Repeat steps 2 to 7 for passenger side.
9. Periodically check and retighten the hardware as necessary.

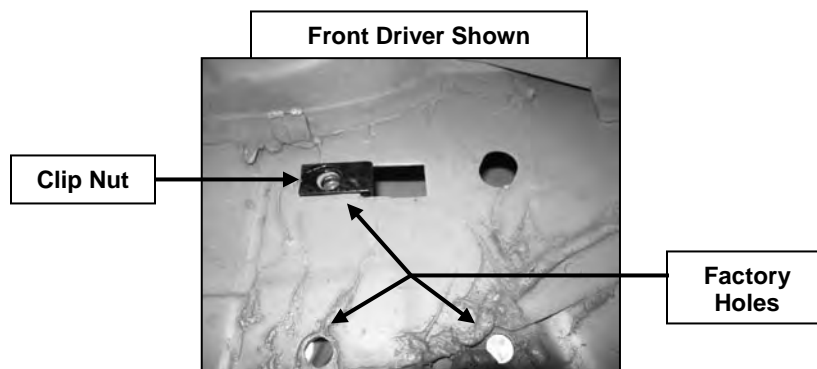


Figure 1

Front Driver Side Bracket Shown

Clip Nut, 10mm x 40mm Hex Bolt, 10mm Lock Washer, & 10mm Flat Washer

10mm x 40mm Hex Bolt, 10mm Lock Washer, 10mm Flat Washer, 10mm Nut

Disregard hole

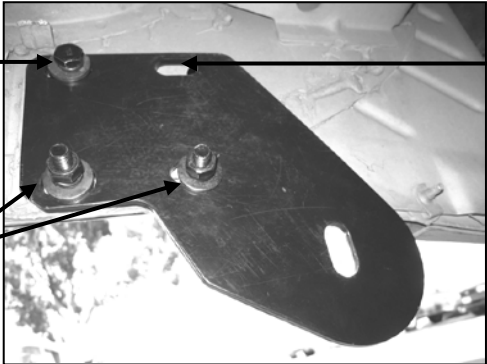


Figure 2

Rear Driver Side Bracket Shown

Clip Nut, 10mm x 40mm Hex Bolt, 10mm Lock Washer, & 10mm Flat Washer

10mm x 40mm Hex Bolt, 10mm Lock Washer, 10mm Flat Washer, 10mm Nut

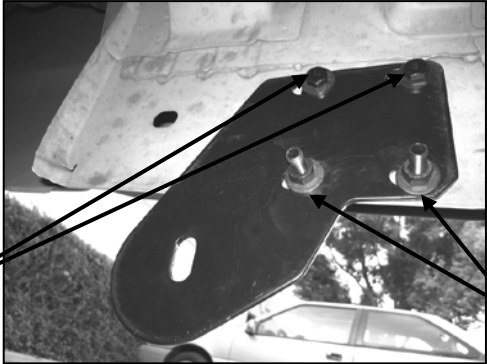


Figure 3

Rear Driver Side Bracket Shown

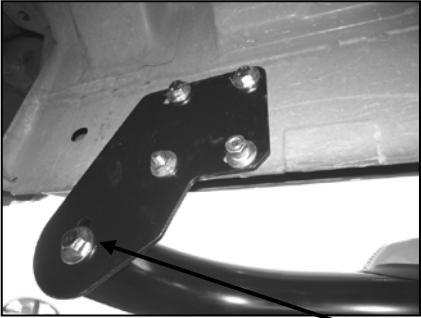


Figure 4

Front Driver Side Bracket Shown

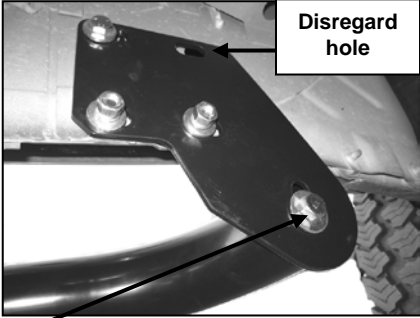


Figure 5

1/2" * 2" Hex Bolt, 1/2" Lock Washer, & 1/2" Flat Washer