



2021-2024 Ford Bronco 4WD
FB04LLR-SX | 0"-4" Lift Heights
Adjustable Rear Lower Flex Links
Installation Instructions

Required Tools List:

- SAE Sockets \ Wrenches
(1/4" Socket & 1-13/16")
- Metric Sockets \ Wrenches
(19mm & 24mm)
- Lithium Grease
- Adjustable Pipe Wrench
- Dead Blow Hammer
- Drift Punch
- Safety Glasses
- Jack Stands
- Wheel Chock
- Floor Jack
- Measuring Tape
- Torque Wrench



Before beginning installation, read these instructions & enclosed driver's WARNING NOTICE thoroughly & completely. Also affix WARNING decal in passenger compartment in clear view of all occupants. Please refer to Parts List to insure that all parts & hardware are received prior to disassembly of vehicle. If any parts are found to be missing, contact SKYJACKER® Customer Service at 318-388-0816 to obtain needed items. If you have any questions or reservations about installing this product, contact SKYJACKER® Technical Assistance at 318-388-0816.

Important Notes:

- This Product is NOT Designed to Fit Following Models:
 - Does Not Fit Bronco Sport Models.
 - Does Not Fit Bronco Raptor Models.
- After Installation, a Qualified Alignment Facility Is Required to Align Vehicle to OEM Specifications.

Component Box Breakdown:

Part # FB04LLR-SX		
Item #	Description	Qty
FB04LLR-SX-L	LOWER FLEX LINK, REAR	2
RE114-74640R	ROD END 1-1/4" RH 74MM 0.640 ID	2
114RFTJN	1-1/4" RIGHT HAND JAM NUT	2
HB-FBLLR-SX	HDWR BAG: FB04LLR-SX	1

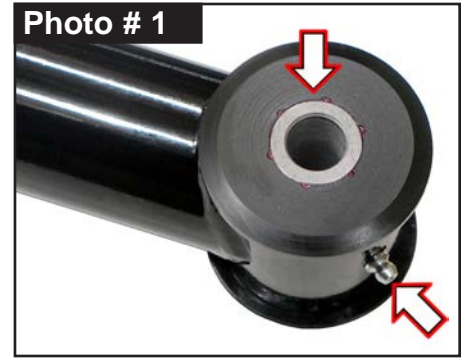
Hardware Bag Breakdown:

Part # HB-FBLLR-SX		
Item #	Description	Qty
CS2756	CRUSH SLEEVE, 1 X 0.63 X 2.756	2
SP3643	LINK BUSHING, FORD	4
ZF316	ZERK FITTING ALEMITE, 3/16"	2
16X120MMB	16MM X 120MM BOLT/10.9	1
16MMN	16MM NYLON INSERT LOCK NUT	1
58SAEW	5/8 SAE WASHER	2

Pre-Installation Tips: 'SET' Length of Rear Lower Flex Link Assemblies.

Note: Skyjacker Lower Flex Links Assembly with # RE114-74640R Right Hand 1-1/4" Rod End & # 114RFTJN Right Hand 1-1/4" Jam Nut.

1. Install supplied drive-in Zerk Grease Fitting Alemite into mount hole at bushing end of Skyjacker Flex Link. (Photo # 1) Use a 1/4" socket over Zerk fittings & tap with a dead blow hammer until fitting is completely set into place.

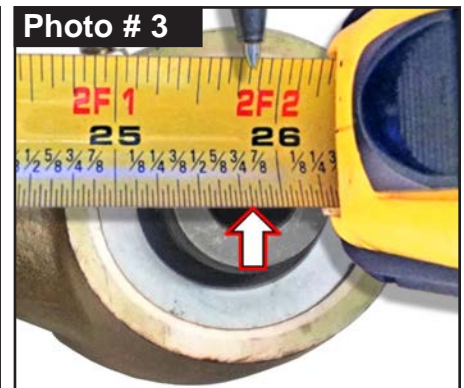


2. On open eye end, Coat Link Bushings with a water resistant Lithium grease & press into link eye. (Photo # 1)

Coat 2.756" Length Sleeve with a water resistant Lithium grease & press into link eye bushings. (Photo # 1)

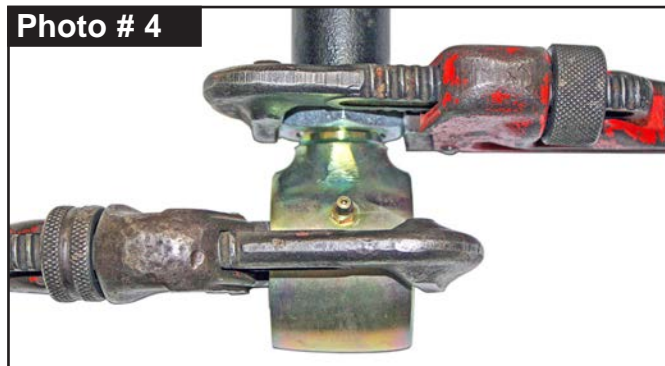
3. Measure length of Skyjacker Lower Flex Link Assembly from centerline of rod end to centerline of link arm mount hole. (Photo # 2 & # 3) **Note:** Be sure to keep ends square with each other.

Lower Flex Link Measurement = **25-13/16"** **Note:** These are pre-alignment measurements only. Final Measurements are to be set by a qualified alignment facility.



4. On rod end, rotate jam nut against steel tubing. Hold rod end in place with a pipe wrench & a 1-13/16" wrench on jam nut to completely tighten. (Photo # 4 & # 5)

Tech Note: Jam nut must be tightened against steel tubing before installation.



Rear Installation: **Note:** Save all factory components & hardware for reuse, unless noted.

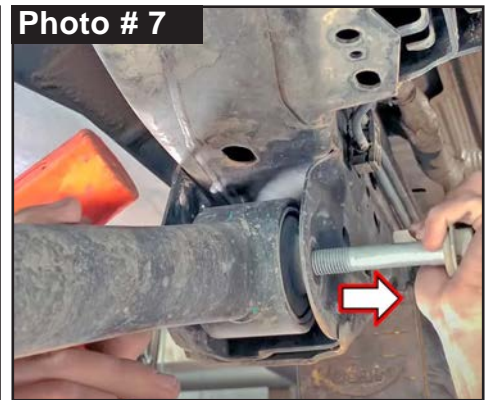
1. Chock front tires \ wheels, raise rear of vehicle & support frame rails using jack stands at indicated lift points in service manual. **Tech Note:** OEM rear lower control arms will need to move freely during this installation.

2. Remove rear tires \ wheels using a 19mm socket.

3. Support rear axle with a hydraulic jack. Allow ample room to raise \ lower rear axle.

Tech Note: Attach a ratchet strap to frame going under rear pinion where driveshaft attaches. This will help to keep rear diff from rolling & allow you to adjust angle during installation.

4. Begin on Driver Side. Disconnect OEM rear Lower Control Arm (LCA) from rear OEM axle mount using a 24mm socket \ wrench. (Photo # 6) Remove OEM tab bolt & lock nut. **Tech Note:** A dead blow hammer & drift punch maybe needed to remove OEM bolt.



Disconnect OEM rear LCA from front OEM frame mount using a 24mm socket \ wrench. (Photo # 7) Remove OEM tab bolt & lock nut. Remove OEM rear LCA.

5. **Note:** Skyjacker Lower Flex Links Are Not Side Specific. Driver or Passenger Side.

Attach Flex Link Rod End to Front OEM driver side frame mount with OEM bolt & tab lock nut using a 24mm socket \ wrench. Secure, but **Do Not Completely Tighten** at this time. **Note:** To set bushings properly for ride height, these will be tightened once vehicle is on ground with full vehicle weight on tires \ wheels.

Attach Flex Link Bushing End to Rear OEM driver side axle mount with OEM bolt & tab lock nut using a 24mm socket \ wrench. Secure, but **Do Not Completely Tighten** at this time.

6. **NOTE:** Passenger side front link eye OEM bolt can not be removed & re-used unless OEM fuel tank is completely removed (just lowering fuel tank to side will not leave sufficient room to remove the bolt).

Skyjacker supplies a replacement bolt for a remove & replace option for passenger side only.

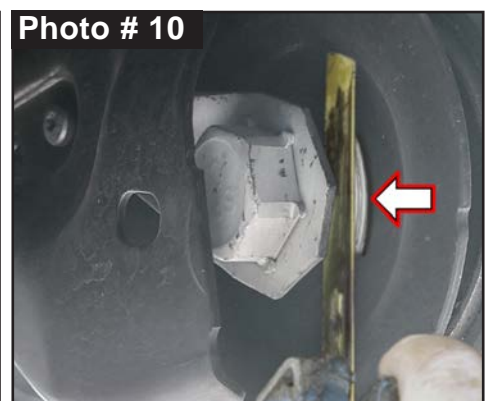
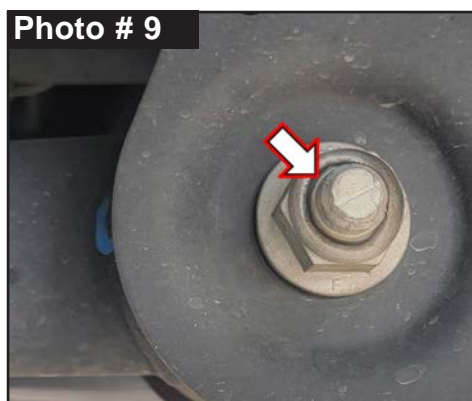
Loosen passenger side front link eye OEM lock nut with 24mm socket \ wrench. Loosen by approximately 1/4" to end of bolt threads. (Photo # 8)

With nut still on bolt, tap bolt toward inside of vehicle using a dead blow hammer. (Photo # 9)

With shank of bolt exposed, cut off tab bolt head using a reciprocating saw. (Photo # 10)

CAUTION: Cut Off Bolt Head Slowly & Carefully to Not Damage Fuel Tank.

Remove cut off OEM tab bolt & lock nut toward outside of vehicle. Remove OEM rear LCA.



7. Disconnect OEM rear Lower Control Arm (LCA) from rear OEM axle mount using a 24mm socket \wrench. (Photo # 11)
8. Attach Flex Link Rod End to Front OEM passenger frame mount with supplied 16mm x 120mm Bolt with 5/8" SAE Washer through front OEM frame mount & Flex Link eye from outside-to-inside.



Attach with 5/8" SAE Washer & 16mm Nylon Insert Lock Nut using a 24mm socket \wrench. Secure, but **Do Not Completely Tighten**.

Attach Flex Link Bushing End to Rear OEM passenger axle mount with OEM bolt & tab lock nut using a 24mm socket \wrench. Secure, but **Do Not Completely Tighten** at this time.

9. Install rear tires \wheels using a 19mm socket. Lower vehicle to ground. Torque lugs to OEM service manual specifications.

Final Steps:

1. Start vehicle. Make sure there are no dash lights pertaining to suspension.
2. Jounce vehicle a couple of times. This will help suspension settle to proper ride height. Pay special attention to clearance between tires \wheels, fuel tank lines & wiring, all electrical plugs, etc.
3. **Rear Tighten & Torque Sequence.**
 Skyjacker Flex Link at rear OEM axle mount using a 24mm socket \wrench. Torque 160 ft-lbs.
 Skyjacker Flex Link at front OEM frame mount using a 24mm socket \wrench. Torque 160 ft-lbs.

Final Notes:

- After installation is complete, double check that all nuts & bolts are tight. Refer to following chart for proper torque specifications.
- Have a qualified alignment center align vehicle to OEM specifications.
- After first 100 miles, check all hardware for proper torque & periodically thereafter.

TORQUE SPECIFICATIONS					
INCH SYSTEM			METRIC SYSTEM		
Bolt Size	Grade 5	Grade 8	Bolt Size	Class 8.8	Class 10.9
5/16	180 in-lbs	240 in-lbs	6MM	102 in-lbs	108 in-lbs
3/8	30 ft-lbs	35 ft-lbs	8MM	16 ft-lbs	23 ft-lbs
7/16	45 ft-lbs	60 ft-lbs	10MM	32 ft-lbs	45 ft-lbs
1/2	65 ft-lbs	90 ft-lbs	12MM	55 ft-lbs	75 ft-lbs
9/16	95 ft-lbs	130 ft-lbs	14MM	85 ft-lbs	120 ft-lbs
5/8	135 ft-lbs	175 ft-lbs	16MM	130 ft-lbs	165 ft-lbs
3/4	185 ft-lbs	280 ft-lbs	18MM	170 ft-lbs	240 ft-lbs

**Above Specifications Are Not to Be Used
When Bolt Is Being Installed With a Bushing.**

Seat Belts Save Lives, Please Wear Your Seat Belt.