

Component Box Breakdown:**Part # G250LT**

Item #	Description	Qty
JL23FS-DR	DUAL RATE COIL, FRONT	2
JTG10RMS-S	COIL SPRING SPACER, REAR	2
H-BOX G251	HWDR BOX: G250 / G251 KITS	1

Part # G250LTD

Item #	Description	Qty
JL23HDFS-DR	HD DUAL RATE COIL, FRONT	2
JTG10RMS-S	COIL SPRING SPACER, REAR	2
H-BOX G251	HWDR BOX: G250 / G251 KITS	1

Part # G25X

Item #	Description	Qty
A2386 (FRONT)	ADX 2.0 REMOTE RESERVOIR	2
A2396 (REAR)	ADX 2.0 REMOTE RESERVOIR	2

Component Box Breakdown:**Part # G250PMLT**

Item #	Description	Qty
JL23FS-DR	DUAL RATE COIL, FRONT	2
JTG10RMS-S	COIL SPRING SPACER, REAR	2
H-BOX G251	HWDR BOX: G250 / G251 KITS	1
M9386 (FRONT)	M95 MONOTUBE SHOCK	2
M9396 (REAR)	M95 MONOTUBE SHOCK	2

Part # G250PMLTD

Item #	Description	Qty
JL23HDFS-DR	HD DUAL RATE COIL, FRONT	2
JTG10RMS-S	COIL SPRING SPACER, REAR	2
H-BOX G251	HWDR BOX: G250 / G251 KITS	1
M9386 (FRONT)	M95 MONOTUBE SHOCK	2
M9396 (REAR)	M95 MONOTUBE SHOCK	2

Part # G250RPMLT

Item #	Description	Qty
JL12HDFS-DR	HD DUAL RATE COIL, FRONT	2
JTG10RMS-S	COIL SPRING SPACER, REAR	2
H-BOX G251	HWDR BOX: G250 / G251 KITS	1
M9386 (FRONT)	M95 MONOTUBE SHOCK	2
M9396 (REAR)	M95 MONOTUBE SHOCK	2

Part # G250RPMLTD

Item #	Description	Qty
G24HDFS-DR	HD DUAL RATE COIL, FRONT	2
JTG10RMS-S	COIL SPRING SPACER, REAR	2
H-BOX G251	HWDR BOX: G250 / G251 KITS	1
M9386 (FRONT)	M95 MONOTUBE SHOCK	2
M9396 (REAR)	M95 MONOTUBE SHOCK	2

Component Box Breakdown:**Part # G250RLT**

Item #	Description	Qty
JL12HDFS-DR	HD DUAL RATE COIL, FRONT	2
JTG10RMS-S	COIL SPRING SPACER, REAR	2
H-BOX G251	HWDR BOX: G250 / G251 KITS	1

Part # G250RLTD

Item #	Description	Qty
G24HDFS-DR	HD DUAL RATE COIL, FRONT	2
JTG10RMS-S	COIL SPRING SPACER, REAR	2
H-BOX G251	HWDR BOX: G250 / G251 KITS	1

Part # G25X

Item #	Description	Qty
A2386 (FRONT)	ADX 2.0 REMOTE RESERVOIR	2
A2396 (REAR)	ADX 2.0 REMOTE RESERVOIR	2

Component Box Breakdown:**Part # G250PBLT**

Item #	Description	Qty
JL23FS-DR	DUAL RATE COIL, FRONT	2
JTG10RMS-S	COIL SPRING SPACER, REAR	2
H-BOX G251	HWDR BOX: G250 / G251 KITS	1
B8386 (FRONT)	BLACK MAX SHOCK W/BLK BOOT	2
B8396 (REAR)	BLACK MAX SHOCK W/BLK BOOT	2

Part # G250PBLTD

Item #	Description	Qty
JL23HDFS-DR	HD DUAL RATE COIL, FRONT	2
JTG10RMS-S	COIL SPRING SPACER, REAR	2
H-BOX G251	HWDR BOX: G250 / G251 KITS	1
B8386 (FRONT)	BLACK MAX SHOCK W/BLK BOOT	2
B8396 (REAR)	BLACK MAX SHOCK W/BLK BOOT	2

Part # G250RPBLT

Item #	Description	Qty
JL12HDFS-DR	HD DUAL RATE COIL, FRONT	2
JTG10RMS-S	COIL SPRING SPACER, REAR	2
H-BOX G251	HWDR BOX: G250 / G251 KITS	1
B8386 (FRONT)	BLACK MAX SHOCK W/BLK BOOT	2
B8396 (REAR)	BLACK MAX SHOCK W/BLK BOOT	2

Part # G250RPBLTD

Item #	Description	Qty
G24HDFS-DR	HD DUAL RATE COIL, FRONT	2
JTG10RMS-S	COIL SPRING SPACER, REAR	2
H-BOX G251	HWDR BOX: G250 / G251 KITS	1
B8386 (FRONT)	BLACK MAX SHOCK W/BLK BOOT	2
B8396 (REAR)	BLACK MAX SHOCK W/BLK BOOT	2

Component Box Breakdown:**Part # G251LT**

Item #	Description	Qty
JL23FS-DR	DUAL RATE COIL, FRONT	2
G200RS-DR	DUAL RATE COIL, REAR 20.0	1
G205RS-DR	DUAL RATE COIL, REAR 20.5	1
H-BOX G251	HWDR BOX: G250 / G251 KITS	1

Part # G251LTD

Item #	Description	Qty
JL23HDFS-DR	HD DUAL RATE COIL, FRONT	2
G200RS-DR	DUAL RATE COIL, REAR 20.0	1
G205RS-DR	DUAL RATE COIL, REAR 20.5	1
H-BOX G251	HWDR BOX: G250 / G251 KITS	1

Part # G25X

Item #	Description	Qty
A2386 (FRONT)	ADX 2.0 REMOTE RESERVOIR	2
A2396 (REAR)	ADX 2.0 REMOTE RESERVOIR	2

Component Box Breakdown:**Part # G251PBLT**

Item #	Description	Qty
JL23FS-DR	DUAL RATE COIL, FRONT	2
G200RS-DR	DUAL RATE COIL, REAR 20.0	1
G205RS-DR	DUAL RATE COIL, REAR 20.5	1
H-BOX G251	HWDR BOX: G250 / G251 KITS	1
B8386 (FRONT)	BLACK MAX SHOCK W/BLK BOOT	2
B8396 (REAR)	BLACK MAX SHOCK W/BLK BOOT	2

Part # G251PBLTD

Item #	Description	Qty
JL23HDFS-DR	HD DUAL RATE COIL, FRONT	2
G200RS-DR	DUAL RATE COIL, REAR 20.0	1
G205RS-DR	DUAL RATE COIL, REAR 20.5	1
H-BOX G251	HWDR BOX: G250 / G251 KITS	1
B8386 (FRONT)	BLACK MAX SHOCK W/BLK BOOT	2
B8396 (REAR)	BLACK MAX SHOCK W/BLK BOOT	2

Part # G251RPBLT

Item #	Description	Qty
JL12HDFS-DR	HD DUAL RATE COIL, FRONT	2
G205RS-DR	DUAL RATE COIL, REAR 20.5	1
G210RS-DR	DUAL RATE COIL, REAR 21.0	1
H-BOX G251	HWDR BOX: G250 / G251 KITS	1
B8386 (FRONT)	BLACK MAX SHOCK W/BLK BOOT	2
B8396 (REAR)	BLACK MAX SHOCK W/BLK BOOT	2

Part # G251RPBLTD

Item #	Description	Qty
G24HDFS-DR	HD DUAL RATE COIL, FRONT	2
G205RS-DR	DUAL RATE COIL, REAR 20.5	1
G210RS-DR	DUAL RATE COIL, REAR 21.0	1
H-BOX G251	HWDR BOX: G250 / G251 KITS	1
B8386 (FRONT)	BLACK MAX SHOCK W/BLK BOOT	2
B8396 (REAR)	BLACK MAX SHOCK W/BLK BOOT	2

Component Box Breakdown:**Part # G251RLT**

Item #	Description	Qty
JL12HDFS-DR	HD DUAL RATE COIL, FRONT	2
G205RS-DR	DUAL RATE COIL, REAR 20.5	1
G210RS-DR	DUAL RATE COIL, REAR 21.0	1
H-BOX G251	HWDR BOX: G250 / G251 KITS	1

Part # G251RLTD

Item #	Description	Qty
G24HDFS-DR	HD DUAL RATE COIL, FRONT	2
G205RS-DR	DUAL RATE COIL, REAR 20.5	1
G210RS-DR	DUAL RATE COIL, REAR 21.0	1
H-BOX G251	HWDR BOX: G250 / G251 KITS	1

Part # G25X

Item #	Description	Qty
A2386 (FRONT)	ADX 2.0 REMOTE RESERVOIR	2
A2396 (REAR)	ADX 2.0 REMOTE RESERVOIR	2

Component Box Breakdown:**Part # G251PMLT**

Item #	Description	Qty
JL23FS-DR	DUAL RATE COIL, FRONT	2
G200RS-DR	DUAL RATE COIL, REAR 20.0	1
G205RS-DR	DUAL RATE COIL, REAR 20.5	1
H-BOX G251	HWDR BOX: G250 / G251 KITS	1
M9386 (FRONT)	M95 MONOTUBE SHOCK	2
M9396 (REAR)	M95 MONOTUBE SHOCK	2

Part # G251PMLTD

Item #	Description	Qty
JL23HDFS-DR	HD DUAL RATE COIL, FRONT	2
G200RS-DR	DUAL RATE COIL, REAR 20.0	1
G205RS-DR	DUAL RATE COIL, REAR 20.5	1
H-BOX G251	HWDR BOX: G250 / G251 KITS	1
M9386 (FRONT)	M95 MONOTUBE SHOCK	2
M9396 (REAR)	M95 MONOTUBE SHOCK	2

Part # G251RPMLT

Item #	Description	Qty
JL12HDFS-DR	HD DUAL RATE COIL, FRONT	2
G205RS-DR	DUAL RATE COIL, REAR 20.5	1
G210RS-DR	DUAL RATE COIL, REAR 21.0	1
H-BOX G251	HWDR BOX: G250 / G251 KITS	1
M9386 (FRONT)	M95 MONOTUBE SHOCK	2
M9396 (REAR)	M95 MONOTUBE SHOCK	2

Part # G251RPMLTD

Item #	Description	Qty
G24HDFS-DR	HD DUAL RATE COIL, FRONT	2
G205RS-DR	DUAL RATE COIL, REAR 20.5	1
G210RS-DR	DUAL RATE COIL, REAR 21.0	1
H-BOX G251	HWDR BOX: G250 / G251 KITS	1
M9386 (FRONT)	M95 MONOTUBE SHOCK	2
M9396 (REAR)	M95 MONOTUBE SHOCK	2

Hardware Box Breakdown:

Part # H-BOX G251

Item #	Description	Qty
SBE4048-L	SWAY BAR END LINK, FRT	2
SBE506-L	SWAY BAR END LINK, RR	2
HB-BSS3020	HDWR BAG: BUMP STOP, FRT	1
HB-JTGSBER	HDWR BAG: SB END LINK, RR	1
HB-SBENB03	HDWR BAG: SB END LINK, FRT	1
I-G350	INST SHEET: G350/G351 KITS	1

Hardware Bag Breakdown:

Part # HB-BSS3020-S

Item #	Description	Qty
BSS3020-S	BUMP STOP SPACER, FRT	2
38X234BHB	3/8 X 2-3/4 BUTTON HEAD BOLT	2
38SAEW	3/8 SAE WASHER	2
38CTN	3/8 COARSE THRD N/I LOCK NUT	2

Part # HB-JTGSBER

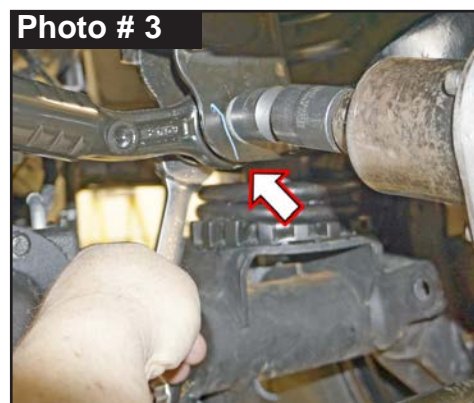
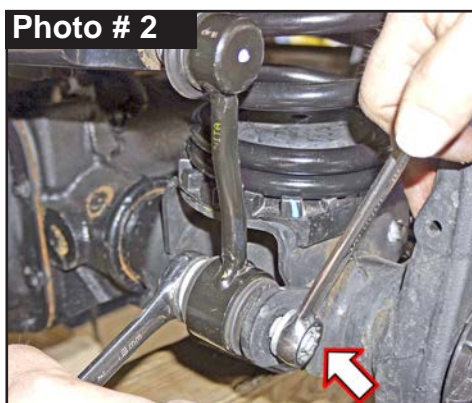
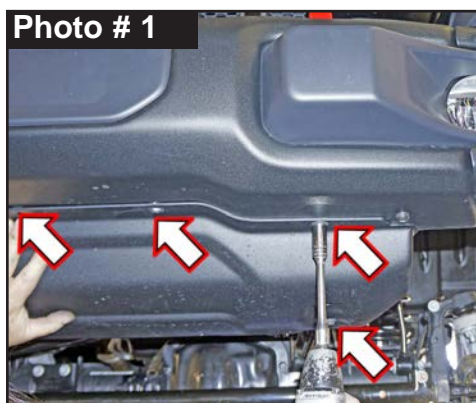
Item #	Description	Qty
HG58125-K	BLACK HOURGLASS BUSHING	4
403712	CRUSH SLEEVE / 1.25 LONG	4
12X65MMB	12MM X 65 METRIC BOLT	2
716USSW	7/16 USS FLAT WASHER	6
12MMN	12MM NYLON INSERT LOCK NUT	2

Part # HB-SBENB03

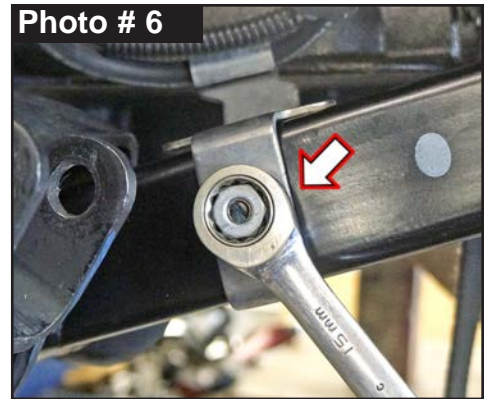
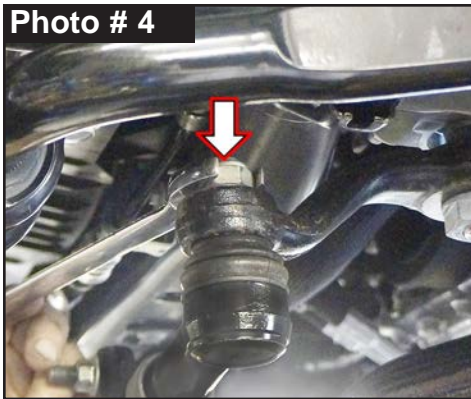
Item #	Description	Qty
141509	ES25 SLEEVE, 1.50 LONG	4
12X70MMB	12 X 70 METRIC BOLT \ 10.9	2
716USSW	7/16 USS FLAT WASHER	4
12MMN	12MM NYLON INSERT LOCK NUT	2

Front Installation: Note: Save all factory components & hardware for reuse, unless noted.

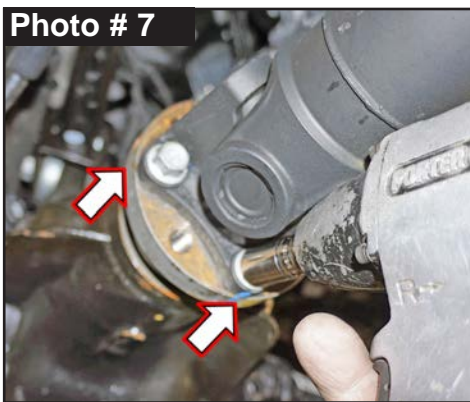
1. With vehicle on flat level ground, set emergency brake & chock rear tires \ wheels.
2. Raise front of vehicle, support frame rails using jack stands at indicated lift points in OEM service manual.
3. Remove the front tires \ wheels using a 22mm socket.
4. Remove OEM front skid plate using a 13mm socket \ wrench. (See Photo # 1)
5. Remove OEM front sway bar end links using a 6mm hex key socket \ wrench & 18mm socket \ wrench. (See Photo # 2)
6. Disconnect OEM front track bar from frame using a 21mm socket \ wrench. (See Photo # 3)



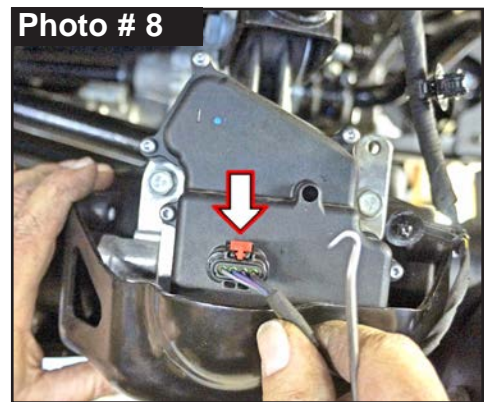
7. Disconnect OEM drag link from OEM pitman arm using a 21mm socket \ wrench. (See Photo # 4)
8. Disconnect OEM front shock from upper shock tower mount & lower axle mount using a 18mm socket \ wrench. (See Photo # 5)
9. Disconnect OEM front brake line bracket from OEM front lower control arm using a 15mm socket \ wrench. (See Photo # 6)



10. Mark the location of OEM front drive shaft \ flange at axle & disconnect using a 15mm socket \ wrench. (See Photo # 7)



11. Disconnect wiring harness from passenger side OEM front upper control arm using pliers.



12. Disconnect wiring harness from OEM 4WD actuator. (See Photo # 8)

13. Disconnect OEM vent hose from front differential using pliers.

14. While checking for appropriate slack in ABS lines, brake lines, differential vent hose & etc. **Tech Note:** Watch the Center Axle Disconnect (CAD) connection & on **RUBICON** Models: The front locker connections.

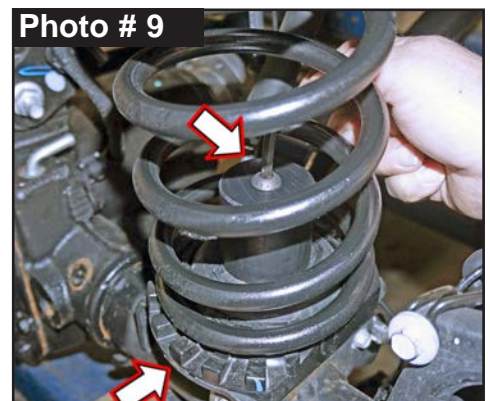
Lower front differential & remove OEM front coil springs.

15. Place Skyjacker # ABSS2535 Front Bump Stop Spacer inside Skyjacker Front Coil Spring. Install front coil spring with bump stop inside. Insert coil spring into upper tower first. Be sure that the coil is indexed to seat properly, then raise axle enough to hold coil spring in place.

Tech Note: If front axle cannot be lowered enough to allow coil spring to be installed, carefully rotate the pinion up to provide more clearance for coil installation.

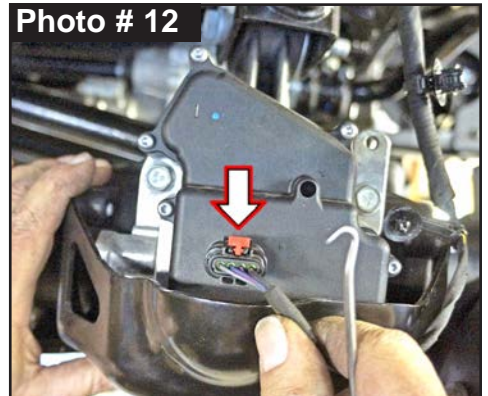
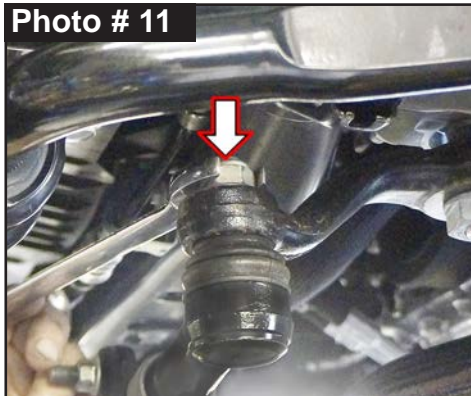
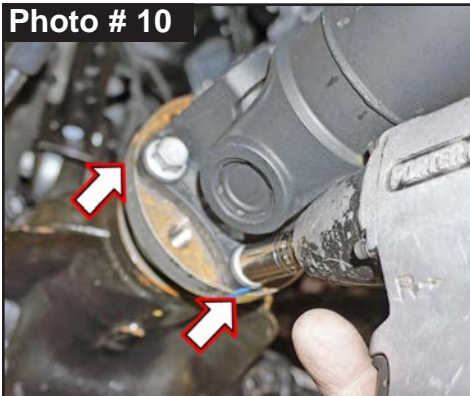
Insert supplied 3/8" x 4-1/2" Button Head Bolt into bump stop. Align bolt into hole of OEM lower coil spring mount pad. Reach under spring mount pad & above axle tube to install supplied 3/8" SAE Washer & 3/8" Nylon Insert Lock Nut onto bolt. Tighten bump stop into place using a 7/32" hex key socket \ wrench & 9/16" socket \ wrench.

(See Photo # 9) Torque 25 ft.-lbs.



Tech Note: On Passenger Side, it may be necessary to remove ABS bracket to install bump stop lock nut. At rear of axle above shock mount, remove ABS mounting bracket using a 10mm socket \ wrench. Once bump stop spacer is tight, reinstall ABS line mounting bracket onto axle.

16. Raise front axle in order to load Skyjacker front coil springs.
17. Connect OEM drive shaft with OEM hardware using a 15mm socket \ wrench. (See Photo # 10)
18. Connect OEM drag link to OEM pitman arm with OEM hardware using a 21mm socket \ wrench. (See Photo # 11) Torque 75 ft-lbs.
19. Connect OEM vent hose to front differential using pliers.
20. Connect wiring harness to OEM 4WD actuator. (See Photo # 12)



21. Connect wiring harness to passenger side OEM front upper control arm.
22. Connect OEM front brake line bracket to OEM front lower control arm using a 15mm socket \ wrench.(See Photo # 13)

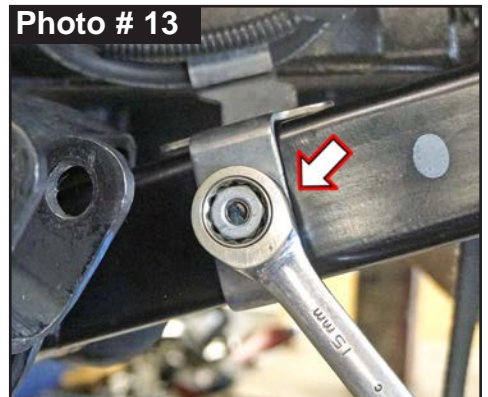
NOTE: Kit With Black MAX \ M95 Monotube: Proceed to Step 23.
Kit With ADX 2.0 Remote Reservoir: Proceed to Step 24.

23. Install Skyjacker front shock with OEM hardware at upper shock tower mount using a 18mm socket \ wrench. (See Photo # 14)

Tech Note: Black MAX & M95 Monotube are to be mounted with cylinder body up for proper installation of pre-installed upper mount bushings.

Note: Upper shock mount has a OEM fixed nut welded onto frame. Be careful not to dislodge nor over tighten this nut.

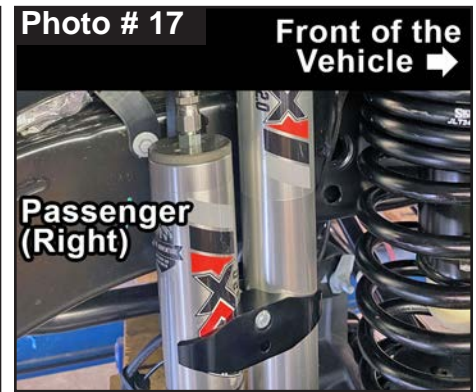
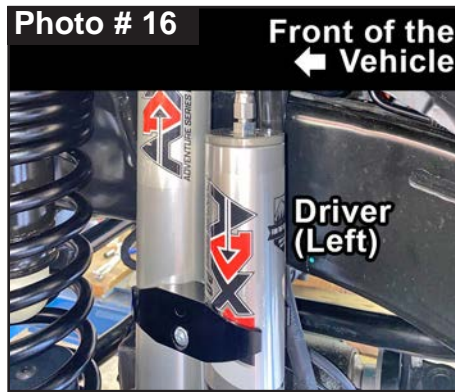
Connect Skyjacker shock at lower axle mount with OEM hardware using a 18mm socket \ wrench. (See Photo # 15) Secure, but **Do Not Completely Tighten** at this time. To set bushings properly for ride height, these will be tightened once vehicle is on ground with full vehicle weight on tires \ wheels.



24. **Tech Note:** ADX Remote Reservoir are to be mounted with cylinder body up & remote reservoir toward rear for proper clearance (opposite side of coil spring mount).

(See Photo # 16 & # 17)

Loosely assemble two (2) supplied reservoir clamps with two (2) supplied hex head bolts using a 5/32" Hex Key socket. Position clamp into place around shock & reservoir cylinder. Secure, but Do Not Completely Tighten at this time.



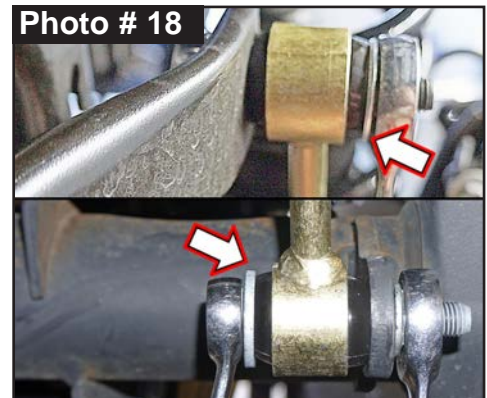
Install Skyjacker ADX front shock with OEM hardware at upper shock tower mount using a 18mm socket \ wrench. **Note:** Upper shock mount has a OEM fixed nut welded onto frame. Be careful not to dislodge nor over tighten this nut.

Connect Skyjacker shock at lower axle mount with OEM hardware using a 18mm socket \ wrench. Secure, but **Do Not Completely Tighten** at this time. These will be tightened once vehicle is on ground with full vehicle weight on tires \ wheels.

25. Coat with a water resistant grease & press # ES25 1.50 Long Steel Sleeves into upper & lower mounts of # SBE4048-L Front Sway Bar End Link.

Install upper end link mount with supplied 12mm x 70mm Bolt with a 7/16" USS Washer through sway bar with a 7/16" USS Washer & 12mm Nylon Insert Lock Nut using a 19mm socket \ wrench. (See Photo # 18)

Attach lower end link with OEM hardware using a 18mm socket \ wrench. **Note:** On Driver Side, install OEM lower bolt with large washer to outer bushing side of sway bar end link. Secure, but Do Not Completely Tighten at this time.

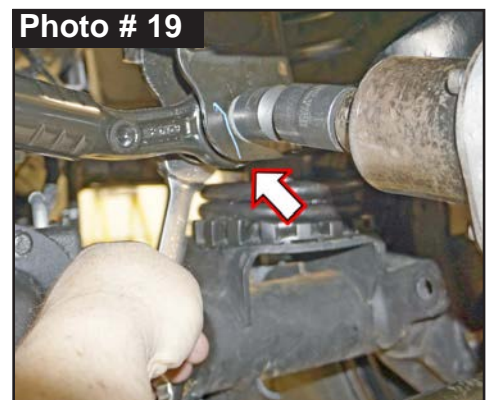


26. Install OEM front skid plate with OEM hardware using a 13mm socket \ wrench. (See Photo # 1)

27. Install front tires \ wheels using a 22mm socket. Lower vehicle to ground. Torque 130 ft-lbs.

28. Connect the OEM front track bar to the frame using the OEM hardware & a 21mm socket \ wrench. (See Photo # 19)

Note: Slightly turning the steering wheel will help align the OEM front track bar with the frame mount.



Rear Installation: Note: Save all factory components & hardware for reuse, unless noted.

1. Chock front tires \ wheels. Raise rear of vehicle & support frame rails using jack stands at indicated lift points in OEM service manual.

2. Remove rear tires \ wheels using a 22mm socket.

3. Remove OEM rear sway bar end link. Disconnect lower link at sway bar using a 6mm hex key socket \ wrench & 18mm socket \ wrench. (See Photo # 20)
Disconnect upper link at outside frame using a 21mm socket \ wrench.

Photo # 20



4. Disconnect OEM rear track bar from rear axle mount using a 21mm socket \ wrench. (See Photo # 21) **Tech Note:** It may be necessary to raise \ lower axle to take pressure off track bar bolt. Retain OEM hardware.

5. Disconnect OEM rear shock at upper & lower hardware using a 21mm socket \ wrench. (See Photo # 22) Remove OEM rear shocks & retain hardware.

Photo # 21

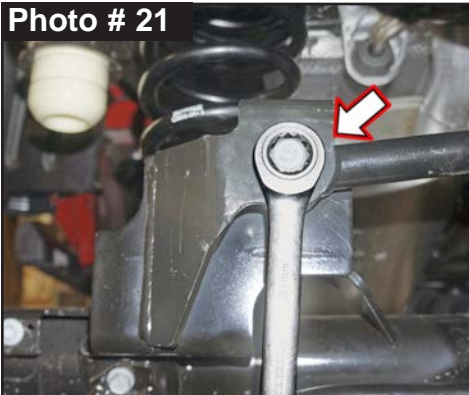
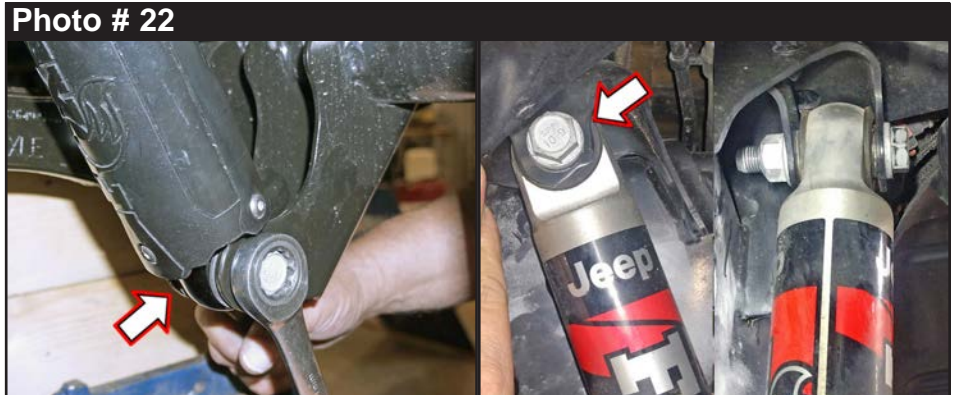


Photo # 22



6. One at a time, remove OEM Rear Upper Control Arm (UCA) using a 21mm socket \ wrench & 24mm socket \ wrench. (See Photo # 23)

One at a time, install Skyjacker # JTGULR24-L Rear UCA with OEM hardware using a 21mm & a 24mm socket \ wrench. (See Photo # 24 & # 25) **Note:** Skyjacker Rear UCA are not side specific. Secure, but **Do Not Completely Tighten** at this time.

Photo # 23



Photo # 24



Photo # 25



7. While checking for appropriate slack in ABS lines, brake lines, differential vent hose & etc.

Note: RUBICON Models: Watch rear locker connections.

Lower rear axle & remove OEM rear coil springs.

Tech Note: OEM upper coil spring isolators are Side Specific to properly align with coil \ frame mounts. Place upper coil spring isolator in upper coil bucket. Mark orientation on isolator & upper coil bucket. Mark top of isolators: DR & PA also.

(See Photo # 26 & # 27)

Photo # 26



Photo # 27



NOTE: Kit With Rear Coil Spring Spacer: Proceed to Step 8.

Kit With Replacement Coil Springs: Proceed to Step 10.

8. To help hold Skyjacker # JTG20RMS-S Rear Coil Spring Spacer in place during installation, the supplied \ attached 1/4" x 3/4" Course Thread Bolt installs from topside of OEM rear coil spring mount down into spacer. **Tech Note:** Install bolt from outside frame rail using a 7/16" wrench. (See Photo # 28)

9. Install OEM rear coil spring isolator. (See Photo # 29) **Note:** Be sure that tab of each OEM upper coil spring isolator is aligned with previous marks & tab hole of OEM upper coil spring mount. (See Photo # 26 & # 27) Install OEM rear coil springs. (See Photo # 30)

Photo # 28

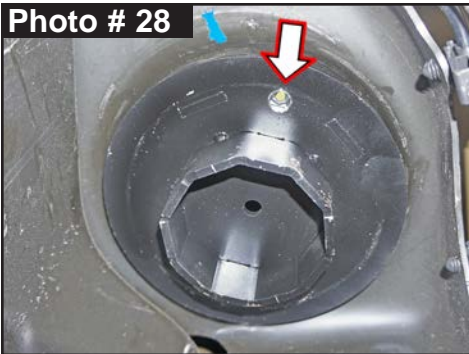


Photo # 29



Photo # 30



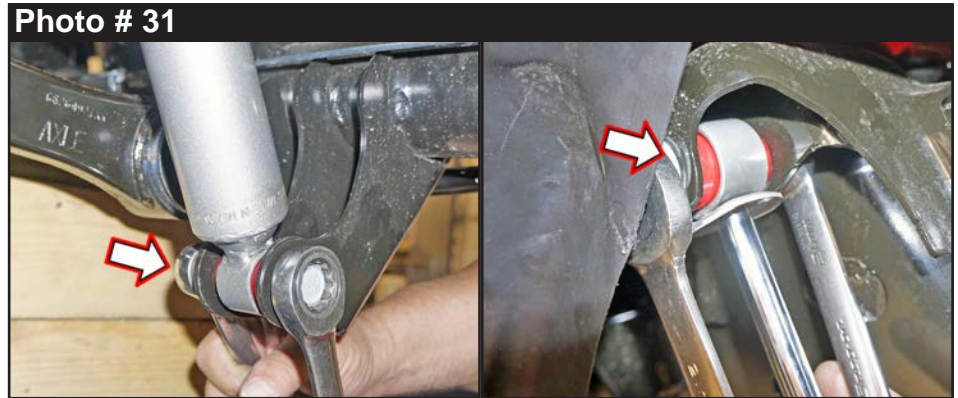
10. Install OEM rear coil spring isolator. (See Photo # 29) **Note:** Be sure that tab of each OEM upper coil spring isolator is aligned with previous marks & tab hole of OEM upper coil spring mount. (See Photo # 26 & # 27)

Install Skyjacker rear coil springs. (See Photo # 30) **Tech Note:** Skyjacker rear coil springs are two different lengths \ heights. The taller rear coil spring is to be installed on OEM fuel tank side of vehicle. The shorter rear coil spring is to be installed on opposite side of vehicle.

Raise rear axle in order to load Skyjacker rear coil springs.

NOTE: Kit With Black MAX\M95 Monotube: Proceed to Step 11.
Kit With ADX 2.0 Remote Reservoir: Proceed to Step 12.

11. Install Skyjacker rear shock with OEM hardware using a 18mm socket \ wrench. Secure, but Do Not Completely Tighten at this time. **Tech Note:** Black MAX & M95 Monotube are to be mounted with cylinder body up for proper installation of pre-installed upper mount bushings. (See Photo # 31)

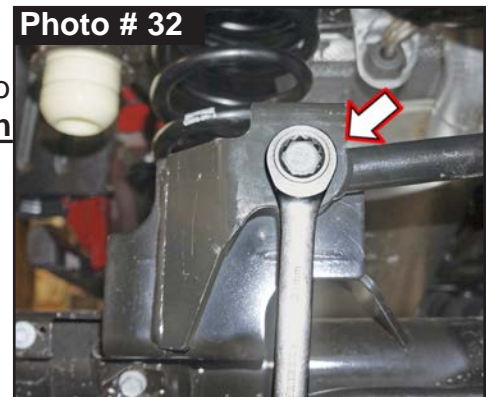


12. **Tech Note:** ADX Remote Reservoir are to be mounted with cylinder body up & remote reservoir toward rear for proper clearance. (See Photo # 16 & # 17)

Loosely assemble two (2) supplied reservoir clamps with two (2) supplied hex head bolts using a 5/32" Hex Key socket. Position clamp into place around shock & reservoir cylinder. Secure, but Do Not Completely Tighten at this time.

Install Skyjacker ADX rear shock with OEM hardware using a 18mm socket \ wrench. Secure, but Do Not Completely Tighten at this time.

13. Connect OEM rear track bar to OEM bracket \ axle mount with OEM bolt & tab nut using a 21mm socket \ wrench. (See Photo # 32) **Note:** Install OEM bolt from rear-to-front of vehicle. **Tech Note:** It may be necessary to raise \ lower axle to align track bar bolt. Secure, but Do Not Completely Tighten at this time.



14. Coat supplied # HG58125-K Hourglass Bushing with a water resistant grease & press into upper & lower mounts of Skyjacker # SBE506-L Rear Sway Bar End Links. Coat & press # 403712 1.50 Long Steel Sleeves into upper & lower mount bushings.

Connect Skyjacker upper end link mount to OEM frame mount with OEM hardware & supplied 7/16 USS Flat Washer to bushing side of end link using a 18mm socket \ wrench. (See Photo # 32) Secure, but Do Not Completely at this time.

Connect Skyjacker lower end link mount to OEM sway bar with supplied 12mm x 65mm Bolt with a 7/16" USS Washer from outside of vehicle inward through sway bar. Attach with a 7/16" USS Washer & 12mm Nylon

Insert Lock Nut on inside using a 18mm socket \ wrench. (See Photo # 33) Secure, but Do Not Completely at this time.



15. Connect OEM vent tube to rear axle using pliers.

16. Install rear tires \ wheels using a 22mm socket. Lower vehicle to ground. Torque 130 ft-lbs.

Final Clearance Check & Torque Steps:

Note: Check Front Center Axle Disconnect (CAD) connection & on **RUBICON** Models: Check Front & Rear locker connections.

1. Start vehicle. Make sure there are no dash lights pertaining to suspension.
2. Jounce vehicle a couple of times. This will help suspension settle to new ride height. Cycle steering lock-to-lock & check all components for proper operation & clearances. Pay special attention to clearance between tires \ wheels & ADX Shocks & Reservoirs, control arms, brake hoses, ABS wiring, etc.
3. Front Tighten & Torque Sequence.
Front shock absorber upper mount using a 18mm wrench. Torque 81 ft-lbs.
Front shock absorber lower mount using a 18mm wrench. Torque 74 ft-lbs.
ADX Reservoir clamp. Double check position & clearance. Tighten with 5/32" Hex Key socket.
Skyjacker sway bar end link upper bolt using a 19mm socket \ wrench. Torque 59 ft-lbs.
Skyjacker sway bar end link lower bolt using a 18mm socket \ wrench. Torque 59 ft-lbs.
4. Rear Tighten & Torque Sequence.
Track bar at OEM bracket. Torque 130 ft-lbs.
Rear shock absorber upper mount using a 18mm socket \ wrench. Torque 81 ft-lbs.
Rear shock absorber lower mount using a 18mm socket \ wrench. Torque 74 ft-lbs.
ADX Reservoir clamp. Double check position & clearance. Tighten with 5/32" Hex Key socket.
Skyjacker sway bar end link mounts using a 18mm socket \ wrench. Torque 59 ft-lbs.

Final Notes:

- After installation is complete, double check that all nuts & bolts are tight. Refer to the following chart for proper torque specifications. (**Note:** Do not re-tighten nuts & bolts where thread lock compound was used.)
- With vehicle placed on ground, cycle steering lock to lock & inspect steering, suspension, brake lines, front & rear drivelines, fuel lines & wiring harnesses for proper operation, tightness & adequate clearance.
- Have headlights readjusted to proper settings.
- Have a qualified alignment center align vehicle to OEM specifications.
- After first 100 miles, check all hardware for proper torque & periodically thereafter.

TORQUE SPECIFICATIONS					
INCH SYSTEM			METRIC SYSTEM		
Bolt Size	Grade 5	Grade 8	Bolt Size	Class 8.8	Class 10.9
5/16	180 in-lbs	240 in-lbs	6MM	60 in-lbs	108 in-lbs
3/8	30 ft-lbs	35 ft-lbs	8MM	216 in-lbs	23 ft-lbs
7/16	45 ft-lbs	60 ft-lbs	10MM	32 ft-lbs	45 ft-lbs
1/2	65 ft-lbs	90 ft-lbs	12MM	55 ft-lbs	75 ft-lbs
9/16	95 ft-lbs	130 ft-lbs	14MM	85 ft-lbs	120 ft-lbs
5/8	135 ft-lbs	175 ft-lbs	16MM	130 ft-lbs	165 ft-lbs
3/4	185 ft-lbs	280 ft-lbs	18MM	170 ft-lbs	240 ft-lbs

**The Above Specifications Are Not to Be Used
When the Bolt Is Being Installed With a Bushing.**

Seat Belts Save Lives, Please Wear Your Seat Belt.

Optional Accessories:

SBE4258 Front Double Disconnect Sway Bar End Links Pair | 3.5"- 6.5" Lift
JTGRTBA20 Adjustable Track Bar | Rear

Optional HD OEM Replacement Steering Stabilizers Available:

7008 HD OEM Replacement Steering Stabilizer | White Steering Damper
8008 HD OEM Replacement Steering Stabilizer | Black Steering Damper
9008 HD OEM Replacement Steering Stabilizer | Silver Steering Damper

Optional Dual Steering Stabilizer Kits Available:

7208 Dual Steering Stabilizer Kit | White Steering Dampers
8208 Dual Steering Stabilizer Kit | Black Steering Dampers
9208 Dual Steering Stabilizer Kit | Silver Steering Dampers

Optional HD Front / Rear Upper & Lower Control Arms Available:

JLL24F-SX Single Flex Front Lower Control Arms Pair | 1"- 6" Lift
GLL24R-SX Single Flex Rear Lower Control Arms Pair | 1"- 6" Lift
JLULF26-SX Single Flex Front Upper Control Arms Pair | 1"- 6" Lift
GULR24-SX Single Flex Rear Upper Control Arms Pair | 1"- 6" Lift