

OFF-ROAD

APPLICATIONS AND PRICING



FEB 4, 2020

TABLE OF CONTENTS

Instructions	03	Stabilizer	08
Air	04	Parts and Accessories	09
Bump Stop	04	Eyelet Chart	11
Coil-Over	04	Shock Specs	12
Coil-Over Internal Bypass	06	Spring Set-Up	13
External Bypass	06	Shox Need Love Too	14
Smooth Body	07		

FIND SHOCKS FOR YOUR VEHICLE

For the most up-to-date application and fitment info for your truck or SUV, visit [RIDEFOX.COM/OFFROAD](https://www.ridefox.com/offroad)

FIND MORE INFORMATION

EXPANDED RESOURCES AND TOOLS ARE AVAILABLE FOR DOWNLOAD AT [RIDEFOX.COM/ORHELP](https://www.ridefox.com/orhelp)

[BYPASS LAYOUT GUIDE](#)

[BYPASS TECHNICAL MANUAL](#)

[EXPLODED VIEW SHEETS](#)

[OIL LEVELS](#)

[OWNERS MANUALS](#)

[SERVICE FORM](#)

[SHAFT EYELET CHART](#)

[SPRING SETUP SHEETS](#)

[VALVING CHART](#)

[WARRANTY INFORMATION](#)

HOW TO USE APPLICATION GUIDE

2.0 FACTORY RACE SERIES COIL-OVER EMULSION - 7/8" SHAFT -10 HIEMS										
2.0 x 10.0 COIL-OVER EMULSION - 7/8" SHAFT, -10 HIEMS	26.15	16.18	-	-	1/2 x 1.50	50/70	980-02-354	\$389.95		
2.0 x 12.0 COIL-OVER EMULSION - 7/8" SHAFT, -10 HIEMS	31.15	19.18	-	-	1/2 x 1.50	50/70	980-02-355	\$389.95		
2.0 x 14.0 COIL-OVER EMULSION - 7/8" SHAFT, -10 HIEMS	35.15	21.18	-	-	1/2 x 1.50	50/70	980-02-356	\$399.95		
2.0 x 16.0 COIL-OVER EMULSION - 7/8" SHAFT, -10 HIEMS	40.15	24.18	-	-	1/2 x 1.50	50/70	980-02-422	\$409.95		



1 DIAMETER, SERIES, TYPE, RESERVOIR AND SHAFT

2 BODY DIAMETER

3 TRAVEL LENGTH ROUNDED UP TO THE NEAREST HALF INCH

4 EXTENDED LENGTH

5 COMPRESSED LENGTH

6 RESERVOIR DIAMETER / RESERVOIR LENGTH

7 REMOTE RESERVOIR HOSE DIAMETER / REMOTE RESERVOIR HOSE LENGTH

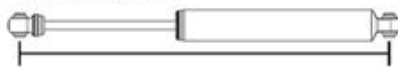
8 MOUNTING BOLT DIAMETER / MOUNTING TAB WIDTH

9 VALVING

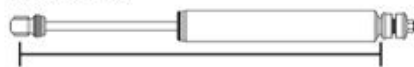
10 PART NUMBER

11 MANUFACTURER'S SUGGESTED RETAIL PRICE

EYELET BUSHING



STEM MOUNT



HOW TO MEASURE EXTENDED, COLLAPSED, & TRAVEL LENGTHS

NOTE: BE SURE TO TAKE INTO CONSIDERATION PIVOT ANGLES OF CV AXLES, DRIVESHAFT, SUSPENSION, AND STEERING COMPONENTS ON BOTH EXTENDED AND COLLAPSED SUSPENSION CYCLES. A LIMIT STRAP AND BUMP STOPS SHOULD BE USED TO LIMIT THE SUSPENSION TRAVEL, NOT THE SHOCK.

STEP 1 (MEASUREMENTS)

EXTENDED (EXT) – SECURE THE FRAME WITH JACK STANDS OR LIFT. REMOVE SHOCKS AND SPRINGS FROM VEHICLE ALLOWING THE SUSPENSION COMPONENTS TO DROP DOWN. ONCE THE DESIRED EXTENDED LENGTH OF THE SUSPENSION TRAVEL IS SET, MEASURE FROM THE CENTER OF THE TOP AND BOTTOM SHOCK MOUNTING POINTS. THIS MEASUREMENT IS YOUR EXTENDED TRAVEL LENGTH.

COLLAPSED (COL) – SECURE THE FRAME WITH JACK STANDS OR LIFT. REMOVE SHOCKS AND SPRINGS FROM VEHICLE. USING A JACK TO COMPRESS THE SUSPENSION TRAVEL TO FULL BOTTOM OUT INCLUDING THE BUMP STOP. MEASURE FROM THE CENTER OF THE TOP AND BOTTOM SHOCK EYELET MOUNTING POINTS. THIS MEASUREMENT IS YOUR COLLAPSED TRAVEL LENGTH.

STEP 2 (TRAVEL)

DETERMINE YOUR REQUIRED SHOCK TRAVEL BY SUBTRACTING THE COLLAPSED LENGTH FROM THE EXTENDED LENGTH. THIS MEASUREMENT IS YOUR TRAVEL LENGTH.

STEP 3 (SELECTING PRODUCT)

USE THE TRAVEL LENGTH TO BEGIN TO NARROW DOWN THE REQUIRED SHOCK FOR THE VEHICLE.

LIMIT STRAP LENGTH SHOULD BE CHANGED TO ACHIEVE THE REQUIRED EXTENDED LENGTH OF THE SELECTED SHOCK.

OPTIONAL SHAFT EYELETS CAN BE PURCHASED TO SLIGHTLY INCREASE OR DECREASE SHOCKS EXTENDED AND COLLAPSED LENGTHS.

AIR

2.0 AIR SHOCKS	EXTENDED	COMPRESSED	RESERVOIR	HOSE	MOUNTING	VALVING	PART#	PRICE
2.0 FACTORY RACE SERIES AIR EMULSION - 1-1/4" SHAFT								
2.0 x 4.0 AIR SHOCK - 1-1/4" SHAFT	15.53	11.53	-	-	1/2 x 1.25	40/90	980-02-013	\$239.95
2.0 x 4.5 AIR SHOCK - 1-1/4" SHAFT	16.53	12.03	-	-	1/2 x 1.25	40/90	980-02-014	\$239.95
2.0 x 5.5 AIR SHOCK - 1-1/4" SHAFT	18.53	13.03	-	-	1/2 x 1.25	40/90	980-02-015	\$239.95
2.0 x 8.5 AIR SHOCK - 1-1/4" SHAFT	24.33	15.83	-	-	1/2 x 1.25	40/90	980-02-016	\$239.95
2.0 x 10.0 AIR SHOCK - 1-1/4" SHAFT	27.43	17.43	-	-	1/2 x 1.25	40/90	980-02-018	\$239.95
2.0 x 12.0 AIR SHOCK - 1-1/4" SHAFT	31.33	19.33	-	-	1/2 x 1.25	40/90	980-02-019	\$249.95
2.0 x 14.0 AIR SHOCK - 1-1/4" SHAFT	35.33	21.33	-	-	1/2 x 1.25	40/90	980-02-020	\$264.95
2.0 x 16.0 AIR SHOCK - 1-1/4" SHAFT	39.83	23.83	-	-	1/2 x 1.25	40/90	980-02-236	\$264.95
2.0 x 18.0 AIR SHOCK - 1-1/4" SHAFT	44.83	26.83	-	-	1/2 x 1.25	40/90	980-02-238	\$284.95

2.5 AIR SHOCKS	EXTENDED	COMPRESSED	RESERVOIR	HOSE	MOUNTING	VALVING	PART#	PRICE
2.5 FACTORY RACE SERIES AIR EMULSION - 5/8" SHAFT								
2.5 x 12.0 AIR SHOCK - 1-5/8" SHAFT	34.61	22.61	-	-	1/2 x 1.50	40/80	980-02-241	\$479.95
2.5 x 14.0 AIR SHOCK - 1-5/8" SHAFT	38.61	24.61	-	-	1/2 x 1.50	40/80	980-02-242	\$489.95
2.5 x 16.0 AIR SHOCK - 1-5/8" SHAFT	42.61	26.61	-	-	1/2 x 1.50	40/80	980-02-243	\$499.95
2.5 x 18.0 AIR SHOCK - 1-5/8" SHAFT	46.61	28.61	-	-	1/2 x 1.50	40/80	980-02-244	\$509.95

BUMP STOP

2.0 BUMP STOP	EXTENDED	COMPRESSED	RESERVOIR	HOSE	MOUNTING	VALVING	PART#	PRICE
2.0 FACTORY RACE SERIES BUMP STOP EMULSION - 1-1/4" SHAFT								
2.0 x 2.0 BUMP STOP (PINCH-BOLT MOUNT) - 1-1/4" SHAFT	9.74	7.7	-	-	-	STANDARD	983-02-091	\$204.95
2.0 x 2.5 BUMP STOP (PINCH-BOLT MOUNT) - 1-1/4" SHAFT	11.44	8.9	-	-	-	STANDARD	980-02-311	\$204.95
2.0 x 3.0 BUMP STOP (PINCH-BOLT MOUNT) - 1-1/4" SHAFT	13.19	10.15	-	-	-	STANDARD	980-02-323	\$204.95
2.0 x 4.0 BUMP STOP (PINCH-BOLT MOUNT) - 1-1/4" SHAFT	14.19	10.15	-	-	-	STANDARD	980-02-022	\$204.95

2.5 BUMP STOP	EXTENDED	COMPRESSED	RESERVOIR	HOSE	MOUNTING	VALVING	PART#	PRICE
2.5 FACTORY RACE SERIES BUMP STOP EMULSION - 1-5/8" SHAFT								
2.5 x 2.45 BUMP STOP (THREADED TOP MOUNT) - 1-5/8" SHAFT	10.8	8.35	-	-	-	STANDARD	980-02-801	\$379.95
2.5 x 2.45 BUMP STOP (THREADED TOP MOUNT) - 1-5/8" SHAFT	11.95	9.5	-	-	-	STANDARD	983-02-126	\$304.95
2.5 x 3.75 BUMP STOP (THREADED TOP MOUNT) - 1-5/8" SHAFT	14.819	11.069	-	-	-	STANDARD	980-02-245	\$409.95
2.5 x 3.75 BUMP STOP (PINCH-BOLT MOUNT) - 1-5/8" SHAFT	15.45	11.7	-	-	-	STANDARD	983-02-127	\$324.95

COIL-OVER

2.0 COIL-OVER SHOCKS	EXTENDED	COMPRESSED	RESERVOIR	HOSE	MOUNTING	VALVING	PART#	PRICE
2.0 FACTORY RACE SERIES COIL-OVER EMULSION - 5/8" SHAFT								
2.0 x 3.5 COIL-OVER EMULSION - 5/8" SHAFT	13.1	9.6	-	-	1/2 x 1.25	40/60	980-02-041	\$239.95
2.0 x 5.0 COIL-OVER EMULSION - 5/8" SHAFT	16.42	11.42	-	-	1/2 x 1.25	40/60	980-02-000	\$239.95
2.0 x 6.5 COIL-OVER EMULSION - 5/8" SHAFT	19.35	12.85	-	-	1/2 x 1.25	40/60	980-02-001	\$239.95
2.0 x 8.5 COIL-OVER EMULSION - 5/8" SHAFT	23.35	14.85	-	-	1/2 x 1.25	40/60	980-02-002	\$274.95
2.0 x 10.0 COIL-OVER EMULSION - 5/8" SHAFT	26.65	16.65	-	-	1/2 x 1.25	40/60	980-02-004	\$274.95
2.0 FACTORY RACE SERIES COIL-OVER EMULSION - 7/8" SHAFT								
2.0 x 10.0 COIL-OVER EMULSION - 7/8" SHAFT	26.1	16.1	-	-	1/2 x 1.25	50/70	980-02-007	\$334.95
2.0 x 10.0 COIL-OVER EMULSION - 7/8" SHAFT, -10 HIEMS	26.15	16.18	-	-	1/2 x 1.50	50/70	980-02-354	\$389.95
2.0 x 12.0 COIL-OVER EMULSION - 7/8" SHAFT	31.1	19.1	-	-	1/2 x 1.25	50/70	980-02-009	\$334.95
2.0 x 12.0 COIL-OVER EMULSION - 7/8" SHAFT, -10 HIEMS	31.15	19.18	-	-	1/2 x 1.50	50/70	980-02-355	\$389.95
2.0 x 14.0 COIL-OVER EMULSION - 7/8" SHAFT	35.1	21.1	-	-	1/2 x 1.25	50/70	980-02-011	\$349.95
2.0 x 14.0 COIL-OVER EMULSION - 7/8" SHAFT, -10 HIEMS	35.15	21.18	-	-	1/2 x 1.50	50/70	980-02-356	\$399.95
2.0 x 16.0 COIL-OVER EMULSION - 7/8" SHAFT	40.1	24.1	-	-	1/2 x 1.25	50/70	980-02-057	\$349.95
2.0 x 16.0 COIL-OVER EMULSION - 7/8" SHAFT, -10 HIEMS	40.15	24.18	-	-	1/2 x 1.50	50/70	980-02-422	\$409.95
2.0 x 18.0 COIL-OVER EMULSION - 7/8" SHAFT	44.1	26.1	-	-	1/2 x 1.25	50/70	980-02-058	\$359.95
2.0 FACTORY RACE SERIES COIL-OVER REMOTE - 5/8" SHAFT								
2.0 x 5.0 COIL-OVER REMOTE - 5/8" SHAFT	16.42	11.42	2.0 x 8.0	-5 x 12.0	1/2 x 1.25	40/60	980-02-040	\$299.95
2.0 x 6.5 COIL-OVER REMOTE - 5/8" SHAFT	19.35	12.85	2.0 x 8.0	-5 x 12.0	1/2 x 1.25	40/60	980-02-006	\$299.95
2.0 x 8.5 COIL-OVER REMOTE - 5/8" SHAFT	23.35	14.85	2.0 x 8.0	-5 x 12.0	1/2 x 1.25	40/60	980-02-003	\$329.95
2.0 x 10.0 COIL-OVER REMOTE - 5/8" SHAFT	26.65	16.65	2.0 x 8.0	-5 x 12.0	1/2 x 1.25	40/60	980-02-005	\$334.95
2.0 FACTORY RACE SERIES COIL-OVER REMOTE LSC - LOW SPEED COMPRESSION ADJUSTER - 5/8" SHAFT								
2.0 x 5.0 COIL-OVER REMOTE LSC ADJUSTER - 5/8" SHAFT	16.42	11.42	2.0 x 8.0	-5 x 12.0	1/2 x 1.25	40/60	980-06-040	\$409.95
2.0 x 6.5 COIL-OVER REMOTE LSC ADJUSTER - 5/8" SHAFT	19.35	12.85	2.0 x 8.0	-5 x 12.0	1/2 x 1.25	40/60	980-06-006	\$409.95
2.0 x 8.5 COIL-OVER REMOTE LSC ADJUSTER - 5/8" SHAFT	23.35	14.85	2.0 x 8.0	-5 x 12.0	1/2 x 1.25	40/60	980-06-003	\$444.95
2.0 x 10.0 COIL-OVER REMOTE LSC ADJUSTER - 5/8" SHAFT	26.65	16.65	2.0 x 8.0	-5 x 12.0	1/2 x 1.25	40/60	980-06-005	\$449.95
2.0 FACTORY RACE SERIES COIL-OVER REMOTE - 7/8" SHAFT								
2.0 x 10.0 COIL-OVER REMOTE - 7/8" SHAFT	26.1	16.1	2.0 x 11.0	-8 x 14.0	1/2 x 1.25	50/70	980-02-008	\$389.95
2.0 x 12.0 COIL-OVER REMOTE - 7/8" SHAFT	31.1	19.1	2.0 x 11.0	-8 x 14.0	1/2 x 1.25	50/70	980-02-010	\$409.95
2.0 x 14.0 COIL-OVER REMOTE - 7/8" SHAFT	35.1	21.1	2.0 x 11.0	-8 x 14.0	1/2 x 1.25	50/70	980-02-012	\$409.95
2.0 x 16.0 COIL-OVER REMOTE - 7/8" SHAFT	40.1	24.1	2.0 x 11.0	-8 x 14.0	1/2 x 1.25	50/70	980-02-059	\$424.95
2.0 x 18.0 COIL-OVER REMOTE - 7/8" SHAFT	44.1	26.1	2.0 x 11.0	-8 x 14.0	1/2 x 1.25	50/70	980-02-060	\$439.95
2.0 FACTORY RACE SERIES COIL-OVER REMOTE DSC - DUAL SPEED COMPRESSION ADJUSTER - 7/8" SHAFT								
2.0 x 10.0 COIL-OVER REMOTE DSC ADJUSTER - 7/8" SHAFT	26.1	16.1	2.0 x 11.0	-8 x 17.75	1/2 x 1.25	50/70	980-06-008	\$639.95
2.0 x 12.0 COIL-OVER REMOTE DSC ADJUSTER - 7/8" SHAFT	31.1	19.1	2.0 x 11.0	-8 x 17.75	1/2 x 1.25	50/70	980-06-010	\$649.95
2.0 x 14.0 COIL-OVER REMOTE DSC ADJUSTER - 7/8" SHAFT	35.1	21.1	2.0 x 11.0	-8 x 17.75	1/2 x 1.25	50/70	980-06-012	\$649.95
2.0 x 16.0 COIL-OVER REMOTE DSC ADJUSTER - 7/8" SHAFT	40.1	24.1	2.0 x 11.0	-8 x 17.75	1/2 x 1.25	50/70	980-06-059	\$649.95
2.0 x 18.0 COIL-OVER REMOTE DSC ADJUSTER - 7/8" SHAFT	44.1	26.1	2.0 x 11.0	-8 x 17.75	1/2 x 1.25	50/70	980-06-060	\$659.95
2.0 FACTORY RACE SERIES COIL-OVER ROTATING REMOTE - 7/8" SHAFT								
2.0 x 10.0 COIL-OVER ROTATING REMOTE - 7/8" SHAFT, -10 HIEMS	26.15	16.18	2.0 x 11.0	-8 x 17.75	1/2 x 1.50	50/70	983-02-074	\$519.95

COIL-OVER

2.0 COIL-OVER SHOCKS (CONTINUED)									
2.0 FACTORY RACE SERIES COIL-OVER ROTATING REMOTE - 7/8" SHAFT									
2.0 x 12.0 COIL-OVER ROTATING REMOTE - 7/8" SHAFT, -10 HEIMS	31.15	19.15	2.0 x 11.0	-8 x 17.75	1/2 x 1.50	50/70	983-02-075	\$519.95	
2.0 x 14.0 COIL-OVER ROTATING REMOTE - 7/8" SHAFT, -10 HEIMS	35.12	18.18	2.0 x 11.0	-8 x 17.75	1/2 x 1.50	50/70	983-02-076	\$519.95	
2.0 x 16.0 COIL-OVER ROTATING REMOTE - 7/8" SHAFT, -10 HEIMS	40.12	24.18	2.0 x 11.0	-8 x 17.75	1/2 x 1.50	50/70	983-02-077	\$544.95	
2.0 x 18.0 COIL-OVER ROTATING REMOTE - 7/8" SHAFT, -10 HEIMS	44.12	26.18	2.0 x 11.0	-8 x 17.75	1/2 x 1.50	50/70	983-02-078	\$544.95	
2.0 FACTORY RACE SERIES COIL-OVER ROTATING REMOTE DSC - DUAL SPEED COMPRESSION ADJUSTER - 7/8" SHAFT									
2.0 X 10.0 COIL-OVER ROTATING REMOTE DSC ADJUSTER - 7/8" SHAFT, -10 HEIMS	26.15	16.18	2.0 x 11.0	-8 x 17.75	1/2 x 1.50	50/70	983-06-074	\$789.95	
2.0 X 12.0 COIL-OVER ROTATING REMOTE DSC ADJUSTER - 7/8" SHAFT, -10 HEIMS	31.15	19.15	2.0 x 11.0	-8 x 17.75	1/2 x 1.50	50/70	983-06-075	\$789.95	
2.0 X 14.0 COIL-OVER ROTATING REMOTE DSC ADJUSTER - 7/8" SHAFT, -10 HEIMS	35.12	21.18	2.0 x 11.0	-8 x 17.75	1/2 x 1.50	50/70	983-06-076	\$799.95	
2.0 X 16.0 COIL-OVER ROTATING REMOTE DSC ADJUSTER - 7/8" SHAFT, -10 HEIMS	40.12	24.18	2.0 x 11.0	-8 x 17.75	1/2 x 1.50	50/70	983-06-077	\$819.95	
2.0 X 18.0 COIL-OVER ROTATING REMOTE DSC ADJUSTER - 7/8" SHAFT, -10 HEIMS	44.12	26.18	2.0 x 11.0	-8 x 17.75	1/2 x 1.50	50/70	983-06-078	\$829.95	
2.0 FACTORY RACE SERIES COIL-OVER PIGGYBACK DSC - DUAL SPEED COMPRESSION ADJUSTER - 5/8" SHAFT									
2.0 x 6.5 COIL-OVER PIGGYBACK DSC ADJUSTER - 5/8" SHAFT	19.34	12.87	2.0 x 6.0	-	1/2 x 1.25	CUSTOM	983-06-000	\$409.95	
2.0 x 10.0 COIL-OVER PIGGYBACK DSC ADJUSTER - 5/8" SHAFT	26.64	16.67	2.0 x 8.0	-	1/2 x 1.25	CUSTOM	983-06-001	\$409.95	
2.0 FACTORY RACE SERIES COIL-OVER PIGGYBACK BOC DSC - DUAL SPEED COMPRESSION ADJUSTER - 5/8" SHAFT									
2.0 x 6.5 COIL-OVER PIGGYBACK BOC DSC ADJUSTER - 5/8" SHAFT	21.34	14.87	2.0 x 6.0	-	1/2 x 1.25	CUSTOM	983-06-002	\$489.95	
2.0 x 8.5 COIL-OVER PIGGYBACK BOC DSC ADJUSTER - 5/8" SHAFT	26.14	17.67	2.0 x 8.0	-	1/2 x 1.25	CUSTOM	983-06-003	\$489.95	
2.0 x 10.0 COIL-OVER PIGGYBACK BOC DSC ADJUSTER - 5/8" SHAFT	29.64	19.675	2.0 x 8.0	-	1/2 x 1.25	CUSTOM	983-06-004	\$489.95	
2.0 FACTORY RACE SERIES COIL-OVER PIGGYBACK - 7/8" SHAFT									
2.0 x 10.0 COIL-OVER PIGGYBACK - 7/8" SHAFT	26.1	16.1	2.0 x 8.0	-	1/2 x 1.25	50/70	980-02-157	\$439.95	
2.0 x 12.0 COIL-OVER PIGGYBACK - 7/8" SHAFT	31.1	19.1	2.0 x 11.0	-	1/2 x 1.25	50/70	980-02-158	\$439.95	
2.0 x 14.0 COIL-OVER PIGGYBACK - 7/8" SHAFT	35.1	21.1	2.0 x 11.0	-	1/2 x 1.25	50/70	980-02-159	\$439.95	
2.0 x 16.0 COIL-OVER PIGGYBACK - 7/8" SHAFT	40.1	24.1	2.0 x 11.0	-	1/2 x 1.25	50/70	980-02-160	\$439.95	
2.0 x 18.0 COIL-OVER PIGGYBACK - 7/8" SHAFT	44.1	26.1	2.0 x 11.0	-	1/2 x 1.25	50/70	980-02-161	\$449.95	

2.5 COIL-OVER SHOCKS	EXTENDED	COMPRESSED	RESERVOIR	HOSE	MOUNTING	VALVING	PART#	PRICE
2.5 PERFORMANCE SERIES COIL-OVER REMOTE - 7/8" SHAFT								
2.5 x 6.0 COIL-OVER REMOTE - 7/8" SHAFT	19.4	13.45	2.5 x 10.00	-8 x 18.0	1/2 x 1.50	50/70	983-02-101	\$489.95
2.5 x 8.0 COIL-OVER REMOTE - 7/8" SHAFT	24.45	16.44	2.5 x 10.00	-8 x 18.0	1/2 x 1.50	50/70	983-02-102	\$489.95
2.5 x 10.0 COIL-OVER REMOTE - 7/8" SHAFT	28.45	18.44	2.5 x 10.00	-8 x 18.0	1/2 x 1.50	50/70	983-02-103	\$519.95
2.5 x 12.0 COIL-OVER REMOTE - 7/8" SHAFT	32.45	20.44	2.5 x 14.00	-8 x 18.0	1/2 x 1.50	50/70	983-02-104	\$519.95
2.5 x 14.0 COIL-OVER REMOTE - 7/8" SHAFT	37.45	23.44	2.5 x 14.00	-8 x 18.0	1/2 x 1.50	50/70	983-02-105	\$519.95
2.5 x 16.0 COIL-OVER REMOTE - 7/8" SHAFT	41.45	25.44	2.5 x 14.00	-8 x 18.0	1/2 x 1.50	50/70	983-02-106	\$544.95
2.5 PERFORMANCE SERIES COIL-OVER REMOTE DSC - DUAL SPEED COMPRESSION ADJUSTER - 7/8" SHAFT								
2.5 x 6.0 COIL-OVER REMOTE DSC ADJUSTER - 7/8" SHAFT	19.4	13.45	2.5 x 10.00	-8 x 18.0	1/2 x 1.50	50/70	983-06-101	\$649.95
2.5 x 8.0 COIL-OVER REMOTE DSC ADJUSTER - 7/8" SHAFT	24.45	16.44	2.5 x 10.00	-8 x 18.0	1/2 x 1.50	50/70	983-06-102	\$649.95
2.5 x 10.0 COIL-OVER REMOTE DSC ADJUSTER - 7/8" SHAFT	28.45	18.44	2.5 x 10.00	-8 x 18.0	1/2 x 1.50	50/70	983-06-103	\$669.95
2.5 x 12.0 COIL-OVER REMOTE DSC ADJUSTER - 7/8" SHAFT	32.45	20.44	2.5 x 14.00	-8 x 18.0	1/2 x 1.50	50/70	983-06-104	\$669.95
2.5 x 14.0 COIL-OVER REMOTE DSC ADJUSTER - 7/8" SHAFT	37.45	23.44	2.5 x 14.00	-8 x 18.0	1/2 x 1.50	50/70	983-06-105	\$669.95
2.5 x 16.0 COIL-OVER REMOTE DSC ADJUSTER - 7/8" SHAFT	41.45	25.44	2.5 x 14.00	-8 x 18.0	1/2 x 1.50	50/70	983-06-106	\$699.95
2.5 FACTORY RACE SERIES COIL-OVER EMULSION - 7/8" SHAFT								
2.5 x 8.0 COIL-OVER EMULSION - 7/8" SHAFT	25.43	17.43	-	-	1/2 x 1.50	50/70	980-02-247	\$444.95
2.5 x 10.0 COIL-OVER EMULSION - 7/8" SHAFT	29.43	19.43	-	-	1/2 x 1.50	50/70	980-02-248	\$444.95
2.5 x 12.0 COIL-OVER EMULSION - 7/8" SHAFT	33.43	21.43	-	-	1/2 x 1.50	50/70	980-02-249	\$459.95
2.5 x 14.0 COIL-OVER EMULSION - 7/8" SHAFT	38.43	24.43	-	-	1/2 x 1.50	50/70	980-02-250	\$489.95
2.5 x 16.0 COIL-OVER EMULSION - 7/8" SHAFT	42.43	26.43	-	-	1/2 x 1.50	50/70	980-02-251	\$489.95
2.5 FACTORY RACE SERIES COIL-OVER REMOTE - 7/8" SHAFT								
2.5 x 8.0 COIL-OVER REMOTE - 7/8" SHAFT	25.43	17.43	2.5 x 14.0	-10 x 18.0	1/2 x 1.50	50/70	980-02-062	\$669.95
2.5 x 10.0 COIL-OVER REMOTE - 7/8" SHAFT	29.43	19.43	2.5 x 14.0	-10 x 18.0	1/2 x 1.50	50/70	980-02-106	\$669.95
2.5 x 12.0 COIL-OVER REMOTE - 7/8" SHAFT	33.43	21.43	2.5 x 14.0	-10 x 18.0	1/2 x 1.50	50/70	980-02-107	\$689.95
2.5 x 14.0 COIL-OVER REMOTE - 7/8" SHAFT	38.43	24.43	2.5 x 14.0	-10 x 18.0	1/2 x 1.50	50/70	980-02-108	\$709.95
2.5 x 16.0 COIL-OVER REMOTE - 7/8" SHAFT	42.43	26.43	2.5 x 14.0	-10 x 18.0	1/2 x 1.50	50/70	980-02-109	\$719.95
2.5 FACTORY RACE SERIES COIL-OVER REMOTE DSC - DUAL SPEED COMPRESSION ADJUSTER - 7/8" SHAFT								
2.5 x 8.0 COIL-OVER REMOTE, DSC ADJUSTER - 7/8" SHAFT	25.43	17.43	2.5 x 14.0	-10 x 18.0	1/2 x 1.50	60/40	980-06-062	\$889.95
2.5 x 10.0 COIL-OVER REMOTE DSC ADJUSTER - 7/8" SHAFT	29.43	19.43	2.5 x 14.0	-10 x 18.0	1/2 x 1.50	60/40	980-06-106	\$899.95
2.5 x 12.0 COIL-OVER REMOTE DSC ADJUSTER - 7/8" SHAFT	33.43	21.43	2.5 x 14.0	-10 x 18.0	1/2 x 1.50	60/40	980-06-107	\$909.95
2.5 x 14.0 COIL-OVER REMOTE DSC ADJUSTER - 7/8" SHAFT	38.43	24.43	2.5 x 14.0	-10 x 18.0	1/2 x 1.50	60/40	980-06-108	\$899.95
2.5 x 16.0 COIL-OVER REMOTE DSC ADJUSTER - 7/8" SHAFT	42.43	26.43	2.5 x 14.0	-10 x 18.0	1/2 x 1.50	60/40	980-06-109	\$889.95
2.5 FACTORY RACE SERIES COIL-OVER PIGGYBACK - 7/8" SHAFT								
2.5 x 8.0 COIL-OVER PIGGYBACK - 7/8" SHAFT	25.43	17.43	2.5 x 8.0	-	1/2 x 1.50	50/70	980-02-162	\$639.95
2.5 x 10.0 COIL-OVER PIGGYBACK - 7/8" SHAFT	29.43	19.43	2.5 x 11.0	-	1/2 x 1.50	50/70	980-02-163	\$659.95
2.5 x 12.0 COIL-OVER PIGGYBACK - 7/8" SHAFT	33.43	21.43	2.5 x 11.0	-	1/2 x 1.50	50/70	980-02-164	\$689.95
2.5 x 14.0 COIL-OVER PIGGYBACK - 7/8" SHAFT	38.43	24.43	2.5 x 11.0	-	1/2 x 1.50	50/70	980-02-165	\$689.95
2.5 x 16.0 COIL-OVER PIGGYBACK - 7/8" SHAFT	42.43	26.43	2.5 x 11.0	-	1/2 x 1.50	50/70	980-02-166	\$689.95
2.5 FACTORY RACE SERIES COIL-OVER PIGGYBACK DSC - DUAL SPEED COMPRESSION ADJUSTER - 7/8" SHAFT								
2.5 x 8.0 COIL-OVER PIGGYBACK DSC ADJUSTER - 7/8" SHAFT	25.43	17.43	2.5 x 8.0	-	1/2 x 1.50	50/70	980-06-162	\$799.95
2.5 x 10.0 COIL-OVER PIGGYBACK DSC ADJUSTER - 7/8" SHAFT	29.43	19.43	2.5 x 11.0	-	1/2 x 1.50	50/70	980-06-163	\$819.95
2.5 x 12.0 COIL-OVER PIGGYBACK DSC ADJUSTER - 7/8" SHAFT	33.43	21.43	2.5 x 11.0	-	1/2 x 1.50	50/70	980-06-164	\$839.95
2.5 x 14.0 COIL-OVER PIGGYBACK DSC ADJUSTER - 7/8" SHAFT	38.43	24.43	2.5 x 11.0	-	1/2 x 1.50	50/70	980-06-165	\$839.95
2.5 x 16.0 COIL-OVER PIGGYBACK DSC ADJUSTER - 7/8" SHAFT	42.43	26.43	2.5 x 11.0	-	1/2 x 1.50	50/70	980-06-166	\$839.95

3.0 COIL-OVER SHOCKS	EXTENDED	COMPRESSED	RESERVOIR	HOSE	MOUNTING	VALVING	PART#	PRICE
3.0 FACTORY RACE SERIES COIL-OVER REMOTE								
3.0 x 10.0 COIL-OVER REMOTE - 1" SHAFT	29.5	19.5	3.0 x 12.0	-12 x 18.0	1/2 x 1.50	70/40	980-02-601	\$1,289.95
3.0 x 12.0 COIL-OVER REMOTE - 1" SHAFT	33.5	21.5	3.0 x 12.0	-12 x 18.0	1/2 x 1.50	70/40	980-02-167	\$1,289.95
3.0 x 14.0 COIL-OVER REMOTE - 1" SHAFT	38.5	24.5	3.0 x 14.0	-12 x 18.0	1/2 x 1.50	70/40	980-02-168	\$1,289.95
3.0 x 16.0 COIL-OVER REMOTE - 1" SHAFT	42.5	26.5	3.0 x 16.0	-12 x 18.0	1/2 x 1.50	70/40	980-02-169	\$1,289.95

COIL-OVER INTERNAL BYPASS

2.5 COIL-OVER INTERNAL BYPASS SHOCKS	EXTENDED	COMPRESSED	RESERVOIR	HOSE	MOUNTING	VALVING	PART#	PRICE
2.5 FACTORY RACE SERIES COIL-OVER INTERNAL BYPASS PIGGYBACK - 7/8" SHAFT								
2.5 x 10.0 COIL-OVER INTERNAL BYPASS PIGGYBACK - 7/8" SHAFT	29.43	19.43	2.5 x 11.0	-	1/2 x 1.50	2,1/70	980-02-140	\$879.95
2.5 x 12.0 COIL-OVER INTERNAL BYPASS PIGGYBACK - 7/8" SHAFT	33.43	21.43	2.5 x 11.0	-	1/2 x 1.50	2,1/70	980-02-141	\$879.95
2.5 x 14.0 COIL-OVER INTERNAL BYPASS PIGGYBACK - 7/8" SHAFT	38.43	24.43	2.5 x 11.0	-	1/2 x 1.50	2,1/70	980-02-142	\$879.95
2.5 x 16.0 COIL-OVER INTERNAL BYPASS PIGGYBACK - 7/8" SHAFT	42.43	26.43	2.5 x 11.0	-	1/2 x 1.50	2,1/70	980-02-143	\$879.95
2.5 FACTORY RACE SERIES COIL-OVER INTERNAL BYPASS PIGGYBACK DSC - DUAL SPEED COMPRESSION ADJUSTER - 7/8" SHAFT								
2.5 x 10.0 COIL-OVER INTERNAL BYPASS PIGGYBACK DSC ADJUSTER - 7/8" SHAFT	29.43	19.43	2.5 x 11.0	-	1/2 x 1.50	2,1/70	980-06-140	\$1,029.95
2.5 x 12.0 COIL-OVER INTERNAL BYPASS PIGGYBACK DSC ADJUSTER - 7/8" SHAFT	33.43	21.43	2.5 x 11.0	-	1/2 x 1.50	2,1/70	980-06-141	\$1,029.95
2.5 x 14.0 COIL-OVER INTERNAL BYPASS PIGGYBACK DSC ADJUSTER - 7/8" SHAFT	38.43	24.43	2.5 x 11.0	-	1/2 x 1.50	2,1/70	980-06-142	\$1,029.95
2.5 x 16.0 COIL-OVER INTERNAL BYPASS PIGGYBACK DSC ADJUSTER - 7/8" SHAFT	42.43	26.43	2.5 x 11.0	-	1/2 x 1.50	2,1/70	980-06-143	\$1,029.95

3.0 COIL-OVER INTERNAL BYPASS SHOCKS	EXTENDED	COMPRESSED	RESERVOIR	HOSE	MOUNTING	VALVING	PART#	PRICE
3.0 FACTORY RACE SERIES COIL-OVER INTERNAL BYPASS REMOTE DSC - DUAL SPEED COMPRESSION ADJUSTER - 7/8" SHAFT								
3.0 x 12.0 COIL-OVER INTERNAL BYPASS REMOTE DSC ADJUSTER - 7/8" SHAFT	33.5	21.48	2.5 x 10.0	-10 x 18.0	1/2 x 1.50	3,2/50	983-06-010	\$1,439.95
3.0 x 14.0 COIL-OVER INTERNAL BYPASS REMOTE DSC ADJUSTER - 7/8" SHAFT	38.49	24.48	2.5 x 14.0	-10 x 18.0	1/2 x 1.50	3,2/50	983-06-011	\$1,439.95

EXTERNAL BYPASS

2.0 EXTERNAL BYPASS SHOCKS	EXTENDED	COMPRESSED	RESERVOIR	HOSE	MOUNTING	VALVING	PART#	PRICE
2.0 FACTORY RACE SERIES EXTERNAL BYPASS EMULSION - 5/8" SHAFT								
2.0 x 10.0 EXTERNAL BYPASS (4 TUBE) CLASS 1-2 1600 REMOTE - 5/8" SHAFT	27.09	17.09	2.0 x 8.0	-10 x 31.0	1/2 x 1.25	85/25	980-02-996	\$789.95
2.0 FACTORY RACE SERIES EXTERNAL BYPASS PIGGYBACK - 7/8" SHAFT								
2.0 x 10.0 EXTERNAL BYPASS (2 TUBE) PIGGYBACK - 7/8" SHAFT	26.1	16.1	2.0 x 8.0	-	1/2 x 1.25	90/50	980-02-225	\$689.95
2.0 x 12.0 EXTERNAL BYPASS (2 TUBE) PIGGYBACK - 7/8" SHAFT	31.1	19.1	2.0 x 11.0	-	1/2 x 1.25	90/50	980-02-226	\$689.95
2.0 x 14.0 EXTERNAL BYPASS (2 TUBE) PIGGYBACK - 7/8" SHAFT	35.1	21.1	2.0 x 11.0	-	1/2 x 1.25	90/50	980-02-227	\$709.95
2.0 x 16.0 EXTERNAL BYPASS (2 TUBE) PIGGYBACK - 7/8" SHAFT	40.1	24.1	2.0 x 11.0	-	1/2 x 1.25	90/50	980-02-240	\$729.95
2.0 FACTORY RACE SERIES EXTERNAL BYPASS PIGGYBACK - 7/8" SHAFT								
2.0 x 10.0 EXTERNAL BYPASS (3 TUBE) PIGGYBACK - 7/8" SHAFT	26.1	16.1	2.0 x 8.0	-	1/2 x 1.25	90/50	980-02-295	\$769.95
2.0 x 12.0 EXTERNAL BYPASS (3 TUBE) PIGGYBACK - 7/8" SHAFT	31.1	19.1	2.0 x 11.0	-	1/2 x 1.25	90/50	980-02-296	\$769.95
2.0 x 14.0 EXTERNAL BYPASS (3 TUBE) PIGGYBACK - 7/8" SHAFT	35.1	21.1	2.0 x 11.0	-	1/2 x 1.25	90/50	980-02-297	\$799.95
2.0 x 16.0 EXTERNAL BYPASS (3 TUBE) PIGGYBACK - 7/8" SHAFT	40.1	24.1	2.0 x 11.0	-	1/2 x 1.25	90/50	980-02-298	\$809.95

2.5 EXTERNAL BYPASS SHOCKS	EXTENDED	COMPRESSED	RESERVOIR	HOSE	MOUNTING	VALVING	PART#	PRICE
2.5 FACTORY RACE SERIES EXTERNAL BYPASS REMOTE - 7/8" SHAFT								
2.5 x 10.0 EXTERNAL BYPASS (3 TUBE) REMOTE - 7/8" SHAFT	29.43	19.43	2.5 x 10.0	-10 x 28.0	1/2 x 1.50	2,1/70	980-02-138	\$929.95
2.5 x 12.0 EXTERNAL BYPASS (3 TUBE) REMOTE - 7/8" SHAFT	33.43	21.43	2.5 x 10.0	-10 x 28.0	1/2 x 1.50	2,1/70	980-02-111	\$949.95
2.5 x 14.0 EXTERNAL BYPASS (3 TUBE) REMOTE - 7/8" SHAFT	38.43	24.43	2.5 x 14.0	-10 x 38.0	1/2 x 1.50	2,1/70	980-02-113	\$999.95
2.5 x 16.0 EXTERNAL BYPASS (3 TUBE) REMOTE - 7/8" SHAFT	42.43	26.43	2.5 x 14.0	-10 x 38.0	1/2 x 1.50	2,1/70	980-02-115	\$1,019.95
2.5 x 18.0 EXTERNAL BYPASS (3 TUBE) REMOTE - 7/8" SHAFT	46.43	28.43	2.5 x 14.0	-10 x 38.0	1/2 x 1.50	2,1/70	980-02-117	\$1,029.95
2.5 FACTORY RACE SERIES EXTERNAL BYPASS PIGGYBACK - 7/8" SHAFT								
2.5 x 8.0 EXTERNAL BYPASS (2 TUBE) PIGGYBACK - 7/8" SHAFT	25.43	17.43	2.5 x 8.00	-	1/2 x 1.50	2,1/70	980-02-205	\$819.95
2.5 x 10.0 EXTERNAL BYPASS (2 TUBE) PIGGYBACK - 7/8" SHAFT	29.43	19.43	2.5 x 10.0	-	1/2 x 1.50	2,1/70	980-02-206	\$819.95
2.5 x 12.0 EXTERNAL BYPASS (2 TUBE) PIGGYBACK - 7/8" SHAFT	33.43	21.43	2.5 x 10.0	-	1/2 x 1.50	2,1/70	980-02-207	\$869.95
2.5 x 14.0 EXTERNAL BYPASS (2 TUBE) PIGGYBACK - 7/8" SHAFT	38.43	24.43	2.5 x 14.0	-	1/2 x 1.50	2,1/70	980-02-208	\$869.95
2.5 x 16.0 EXTERNAL BYPASS (2 TUBE) PIGGYBACK - 7/8" SHAFT	42.43	26.43	2.5 x 14.0	-	1/2 x 1.50	2,1/70	980-02-209	\$899.95
2.5 x 18.0 EXTERNAL BYPASS (2 TUBE) PIGGYBACK - 7/8" SHAFT	46.43	28.43	2.5 x 14.0	-	1/2 x 1.50	2,1/70	980-02-211	\$899.95
2.5 FACTORY RACE SERIES EXTERNAL BYPASS PIGGYBACK - 7/8" SHAFT								
2.5 x 8.0 EXTERNAL BYPASS (3 TUBE) PIGGYBACK - 7/8" SHAFT	25.43	17.43	2.5 x 8.00	-	1/2 x 1.50	2,1/70	980-02-212	\$889.95
2.5 x 10.0 EXTERNAL BYPASS (3 TUBE) PIGGYBACK - 7/8" SHAFT	29.43	19.43	2.5 x 10.0	-	1/2 x 1.50	2,1/70	980-02-213	\$909.95
2.5 x 12.0 EXTERNAL BYPASS (3 TUBE) PIGGYBACK - 7/8" SHAFT	33.43	21.43	2.5 x 10.0	-	1/2 x 1.50	2,1/70	980-02-214	\$929.95
2.5 x 14.0 EXTERNAL BYPASS (3 TUBE) PIGGYBACK - 7/8" SHAFT	38.43	24.43	2.5 x 14.0	-	1/2 x 1.50	2,1/70	980-02-215	\$959.95
2.5 x 16.0 EXTERNAL BYPASS (3 TUBE) PIGGYBACK - 7/8" SHAFT	42.43	26.43	2.5 x 14.0	-	1/2 x 1.50	2,1/70	980-02-216	\$979.95
2.5 x 18.0 EXTERNAL BYPASS (3 TUBE) PIGGYBACK - 7/8" SHAFT	46.43	28.43	2.5 x 14.0	-	1/2 x 1.50	2,1/70	980-02-217	\$999.95
2.5 FACTORY RACE SERIES EXTERNAL BYPASS PIGGYBACK - 7/8" SHAFT								
2.5 x 8.0 EXTERNAL BYPASS (4 TUBE) PIGGYBACK - 7/8" SHAFT	25.43	17.43	2.5 x 8.00	-	1/2 x 1.50	2,1/70	980-02-218	\$979.95
2.5 x 10.0 EXTERNAL BYPASS (4 TUBE) PIGGYBACK - 7/8" SHAFT	29.43	19.43	2.5 x 10.0	-	1/2 x 1.50	2,1/70	980-02-219	\$979.95
2.5 x 12.0 EXTERNAL BYPASS (4 TUBE) PIGGYBACK - 7/8" SHAFT	33.43	21.43	2.5 x 10.0	-	1/2 x 1.50	2,1/70	980-02-221	\$1,009.95
2.5 x 14.0 EXTERNAL BYPASS (4 TUBE) PIGGYBACK - 7/8" SHAFT	38.43	24.43	2.5 x 14.0	-	1/2 x 1.50	2,1/70	980-02-222	\$1,049.95
2.5 x 16.0 EXTERNAL BYPASS (4 TUBE) PIGGYBACK - 7/8" SHAFT	42.43	26.43	2.5 x 14.0	-	1/2 x 1.50	2,1/70	980-02-223	\$1,079.95
2.5 x 18.0 EXTERNAL BYPASS (4 TUBE) PIGGYBACK - 7/8" SHAFT	46.43	28.43	2.5 x 14.0	-	1/2 x 1.50	2,1/70	980-02-224	\$1,089.95

3.0 EXTERNAL BYPASS SHOCKS	EXTENDED	COMPRESSED	RESERVOIR	HOSE	MOUNTING	VALVING	PART#	PRICE
3.0 FACTORY RACE SERIES EXTERNAL BYPASS REMOTE - 7/8" SHAFT								
3.0 x 12.0 EXTERNAL BYPASS (3 TUBE) REMOTE - 7/8" SHAFT	33.43	21.43	2.5 x 10.0	-10 x 28.0	1/2 x 1.50	3,2/70	980-02-126	\$1,199.95
3.0 x 14.0 EXTERNAL BYPASS (3 TUBE) REMOTE - 7/8" SHAFT	38.43	24.43	2.5 x 14.0	-10 x 38.0	1/2 x 1.50	3,2/70	980-02-128	\$1,199.95
3.0 x 16.0 EXTERNAL BYPASS (3 TUBE) REMOTE - 7/8" SHAFT	42.43	26.43	2.5 x 14.0	-10 x 38.0	1/2 x 1.50	3,2/70	980-02-130	\$1,199.95
3.0 x 18.0 EXTERNAL BYPASS (3 TUBE) REMOTE - 7/8" SHAFT	46.43	28.43	2.5 x 14.0	-10 x 38.0	1/2 x 1.50	3,2/70	980-02-132	\$1,199.95
3.0 FACTORY RACE SERIES EXTERNAL BYPASS PIGGYBACK								
3.0 x 12.0 EXTERNAL BYPASS (4 TUBE) PIGGYBACK (SHORT COURSE) - 1" SHAFT	33.43	21.43	2.5 x 14.0	-	5/8 x 1.50	3,2/70	981-02-425	\$1,409.95
3.0 x 14.0 EXTERNAL BYPASS (4 TUBE) PIGGYBACK (SHORT COURSE) - 1" SHAFT	38.43	24.43	2.5 x 14.0	-	5/8 x 1.50	3,2/70	981-02-426	\$1,409.95
3.0 FACTORY RACE SERIES EXTERNAL BYPASS PIGGYBACK - 7/8" SHAFT								
3.0 x 10.0 EXTERNAL BYPASS (3 TUBE) PIGGYBACK - 7/8" SHAFT	29.5	19.5	2.5 x 10.0	-	1/2 x 1.50	3,2/70	980-02-798	\$1,199.95
3.0 x 12.0 EXTERNAL BYPASS (3 TUBE) PIGGYBACK - 7/8" SHAFT	33.43	21.43	2.5 x 10.0	-	1/2 x 1.50	3,2/70	980-02-228	\$1,199.95
3.0 x 14.0 EXTERNAL BYPASS (3 TUBE) PIGGYBACK - 7/8" SHAFT	38.43	24.43	2.5 x 14.0	-	1/2 x 1.50	3,2/70	980-02-229	\$1,199.95
3.0 x 16.0 EXTERNAL BYPASS (3 TUBE) PIGGYBACK - 7/8" SHAFT	42.43	26.43	2.5 x 14.0	-	1/2 x 1.50	3,2/70	980-02-230	\$1,199.95
3.0 x 18.0 EXTERNAL BYPASS (3 TUBE) PIGGYBACK - 7/8" SHAFT	46.43	28.43	2.5 x 14.0	-	1/2 x 1.50	3,2/70	980-02-231	\$1,199.95
3.0 FACTORY RACE SERIES EXTERNAL BYPASS PIGGYBACK - 7/8" SHAFT								
3.0 x 12.0 EXTERNAL BYPASS (4 TUBE) PIGGYBACK - 7/8" SHAFT	33.43	21.43	2.5 x 10.0	-	1/2 x 1.50	3,2/70	980-02-232	\$1,359.95

EXTERNAL BYPASS

3.0 EXTERNAL BYPASS SHOCKS (CONTINUED)									
3.0 FACTORY RACE SERIES EXTERNAL BYPASS PIGGYBACK - 7/8" SHAFT									
3.0 x 14.0 EXTERNAL BYPASS (4 TUBE) PIGGYBACK - 7/8" SHAFT	38.43	24.43	2.5 x 14.0	-	1/2 x 1.50	3,2/70	980-02-233	\$1,359.95	
3.0 x 16.0 EXTERNAL BYPASS (4 TUBE) PIGGYBACK - 7/8" SHAFT	42.43	26.43	2.5 x 14.0	-	1/2 x 1.50	3,2/70	980-02-234	\$1,359.95	
3.0 x 18.0 EXTERNAL BYPASS (4 TUBE) PIGGYBACK - 7/8" SHAFT	46.43	28.43	2.5 x 14.0	-	1/2 x 1.50	3,2/70	980-02-235	\$1,359.95	
3.0 FACTORY RACE SERIES EXTERNAL BYPASS PIGGYBACK - 1 1/8" SHAFT									
3.0 x 18.0 EXTERNAL BYPASS (4 TUBE) PIGGYBACK (SHORT COURSE) - 1 1/8" SHAFT	46.43	28.43	3.0 x 16.0	-	5/8 x 1.50	3,2/70	981-02-427	\$1,409.95	

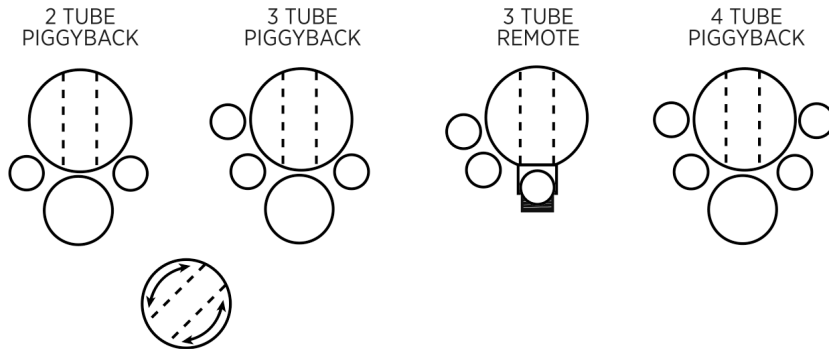
3.5 EXTERNAL BYPASS SHOCKS	EXTENDED	COMPRESSED	RESERVOIR	HOSE	MOUNTING	VALVING	PART#	PRICE
3.5 FACTORY RACE SERIES EXTERNAL BYPASS PIGGYBACK								
3.5 x 12.0 EXTERNAL BYPASS (5 TUBE) PIGGYBACK - 1" SHAFT	33.43	21.43	3.0 x 12.0	-	5/8 x 1.50	3,2/70	980-02-734	\$1,789.95
3.5 x 14.0 EXTERNAL BYPASS (5 TUBE) PIGGYBACK - 1" SHAFT	38.43	24.43	3.0 x 14.0	-	5/8 x 1.50	3,2/70	980-02-254	\$1,789.95
3.5 x 16.0 EXTERNAL BYPASS (5 TUBE) PIGGYBACK - 1" SHAFT	42.43	26.43	3.0 x 16.0	-	5/8 x 1.50	3,2/70	980-02-255	\$1,789.95
3.5 x 18.0 EXTERNAL BYPASS (5 TUBE) PIGGYBACK - 1" SHAFT	46.43	28.43	3.0 x 16.0	-	5/8 x 1.50	3,2/70	980-02-256	\$1,789.95

4.0 EXTERNAL BYPASS SHOCKS	EXTENDED	COMPRESSED	RESERVOIR	HOSE	MOUNTING	VALVING	PART#	PRICE
4.0 FACTORY RACE SERIES EXTERNAL BYPASS PIGGYBACK - 1 1/8" SHAFT								
4.0 x 12.0 EXTERNAL BYPASS (4 TUBE) PIGGYBACK - 1 1/8" SHAFT	33.54	21.54	3.5 x 11.50	-	5/8 x 1.50	3,2/70	981-02-390	\$2,059.95
4.0 x 14.0 EXTERNAL BYPASS (4 TUBE) PIGGYBACK - 1 1/8" SHAFT	38.54	24.54	3.5 x 14.00	-	5/8 x 1.50	3,2/70	981-02-391	\$2,059.95
4.0 FACTORY RACE SERIES EXTERNAL BYPASS PIGGYBACK - 1 1/4" SHAFT								
4.0 x 16.0 EXTERNAL BYPASS (5 TUBE) PIGGYBACK - 1 1/4" SHAFT	42.54	26.54	3.5 x 15.50	-	5/8 x 1.50	3,2/70	981-02-392	\$2,279.95
4.0 x 18.0 EXTERNAL BYPASS (5 TUBE) PIGGYBACK - 1 1/4" SHAFT	46.54	28.54	3.5 x 17.50	-	5/8 x 1.50	3,2/70	981-02-393	\$2,279.95

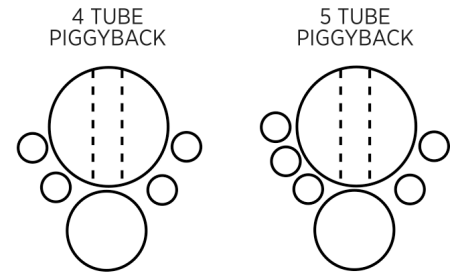
4.4 EXTERNAL BYPASS SHOCKS	EXTENDED	COMPRESSED	RESERVOIR	HOSE	MOUNTING	VALVING	PART#	PRICE
4.4 FACTORY RACE SERIES EXTERNAL BYPASS PIGGYBACK - 1 1/4" SHAFT								
4.4 x 12.0 EXTERNAL BYPASS (4 TUBE) PIGGYBACK - 1 1/4" SHAFT	35	23	3.5 x 11.50	-	5/8 x 1.50	3,2/50	981-02-386	\$2,269.95
4.4 x 14.0 EXTERNAL BYPASS (4 TUBE) PIGGYBACK - 1 1/4" SHAFT	39	25	3.5 x 14.00	-	5/8 x 1.50	3,2/50	981-02-387	\$2,389.95
4.4 FACTORY RACE SERIES EXTERNAL BYPASS PIGGYBACK - 1 1/4" SHAFT								
4.4 x 16.0 EXTERNAL BYPASS (5 TUBE) PIGGYBACK - 1 1/4" SHAFT	44	28	3.5 x 15.50	-	5/8 x 1.50	3,2/50	981-02-388	\$2,269.95
4.4 x 18.0 EXTERNAL BYPASS (5 TUBE) PIGGYBACK - 1 1/4" SHAFT	48	30	3.5 x 17.50	-	5/8 x 1.50	3,2/50	981-02-389	\$2,269.95

STANDARD BYPASS TUBE LAYOUTS

2.0 | 2.5 | 3.0 SHOCKS



3.5 | 4.0 | 4.4 SHOCKS



ROTATING BODY CAP (RBC) DESIGN FEATURE ALLOWS FOR BODY ORIENTATION ADJUSTMENTS

SMOOTH BODY

2.0 SMOOTH BODY SHOCKS	EXTENDED	COMPRESSED	RESERVOIR	HOSE	MOUNTING	VALVING	PART#	PRICE
2.0 FACTORY RACE SERIES SMOOTH BODY REMOTE - 5/8" SHAFT								
2.0 X 5.0 SMOOTH BODY REMOTE - 5/8" SHAFT	15.77	10.77	2.0 x 8.00	-5 x 12.0	1/2 x 1.25	30/90	980-02-029	\$249.95
2.0 X 5.0 SMOOTH BODY REMOTE - CLASS 11 REAR (STOCK MOUNT) - 5/8" SHAFT	15.9	10.77	2.0 x 11.00	-5 x 20.0	1/2 x 1.25	60/90	980-02-121	\$239.95
2.0 X 6.125 SMOOTH BODY REMOTE - CLASS 11 REAR (CUSTOM MOUNT) - 5/8" SHAFT	17.96	11.83	2.5 x 14.00	-5 x 20.0	1/2 x 1.25	85/90	980-02-326	\$359.95
2.0 X 6.5 SMOOTH BODY REMOTE - CLASS 11 FRONT (STEM TOP) - 5/8" SHAFT	18.34	11.84	2.0 x 11.00	-5 x 20.0	12mm x 1.165	45/35	980-02-120	\$334.95
2.0 X 6.5 SMOOTH BODY REMOTE - CLASS 9/11 FRONT (STEM TOP) - 5/8" SHAFT	18.34	11.84	2.0 x 8.00	-5 x 12.0	12mm x 1.165	45/35	980-02-049	\$249.95
2.0 x 5.0 SMOOTH BODY REMOTE - CLASS 11 FRONT (STEM TOP) - 5/8" SHAFT	18.34	11.84	2.5 x 14.00	-5 x 20.0	12mm x 1.165	45/35	980-02-764	\$359.95
2.0 x 6.5 SMOOTH BODY REMOTE - 5/8" SHAFT	18.8	12.3	2.0 x 8.00	-5 x 12.0	1/2 x 1.25	30/90	980-02-030	\$249.95
2.0 X 8.0 SMOOTH BODY REMOTE - 5/8" SHAFT	21.8	13.8	2.0 x 8.00	-5 x 12.0	1/2 x 1.25	30/90	980-02-404	\$249.95
2.0 x 8.5 SMOOTH BODY REMOTE - 5/8" SHAFT	22.8	14.3	2.0 x 8.00	-5 x 12.0	1/2 x 1.25	30/90	980-02-031	\$249.95
2.0 x 10.0 SMOOTH BODY REMOTE - 5/8" SHAFT	26.1	16.1	2.0 x 8.00	-5 x 12.0	1/2 x 1.25	30/90	980-02-032	\$249.95
2.0 x 11.0 SMOOTH BODY REMOTE - 5/8" SHAFT	28.1	17.1	2.0 x 11.00	-5 x 12.0	1/2 x 1.25	30/90	980-02-039	\$269.95
2.0 x 12.0 SMOOTH BODY REMOTE - 5/8" SHAFT	31.1	19.1	2.0 x 11.00	-5 x 12.0	1/2 x 1.25	30/90	980-02-034	\$269.95
2.0 x 14.0 SMOOTH BODY REMOTE - 5/8" SHAFT	35.1	21.1	2.0 x 11.00	-5 x 12.0	1/2 x 1.25	30/90	980-02-035	\$294.95
2.0 FACTORY RACE SERIES SMOOTH BODY REMOTE LSC - LOW SPEED COMPRESSION ADJUSTER - 5/8" SHAFT								
2.0 X 5.0 SMOOTH BODY REMOTE LSC ADJUSTER - 5/8" SHAFT	15.77	10.77	2.0 x 8.00	-5 x 12.0	1/2 x 1.25	30/90	980-06-029	\$369.95
2.0 x 6.5 SMOOTH BODY REMOTE LSC ADJUSTER - 5/8" SHAFT	18.8	12.3	2.0 x 8.00	-5 x 12.0	1/2 x 1.25	30/90	980-06-030	\$369.95
2.0 X 8.0 SMOOTH BODY REMOTE LSC ADJUSTER - 5/8" SHAFT	21.8	13.8	2.0 x 8.00	-5 x 12.0	1/2 x 1.25	30/90	980-06-404	\$369.95
2.0 x 8.5 SMOOTH BODY REMOTE LSC ADJUSTER - 5/8" SHAFT	22.8	14.3	2.0 x 8.00	-5 x 12.0	1/2 x 1.25	30/90	980-06-031	\$369.95
2.0 x 10.0 SMOOTH BODY REMOTE LSC ADJUSTER - 5/8" SHAFT	26.1	16.1	2.0 x 8.00	-5 x 12.0	1/2 x 1.25	30/90	980-06-032	\$369.95
2.0 x 11.0 SMOOTH BODY REMOTE LSC ADJUSTER - 5/8" SHAFT	28.1	17.1	2.0 x 11.00	-5 x 12.0	1/2 x 1.25	30/90	980-06-039	\$379.95
2.0 x 12.0 SMOOTH BODY REMOTE LSC ADJUSTER - 5/8" SHAFT	31.1	19.1	2.0 x 11.00	-5 x 12.0	1/2 x 1.25	30/90	980-06-034	\$379.95

*ADD -1 TO END OF PART NUMBER FOR CUSTOM AND UPGRADE OPTIONS

SMOOTH BODY

2.0 SMOOTH BODY SHOCKS (CONTINUED)								
2.0 FACTORY RACE SERIES SMOOTH BODY REMOTE LSC - LOW SPEED COMPRESSION ADJUSTER - 5/8" SHAFT								
	EXTENDED	COMPRESSED	RESERVOIR	HOSE	MOUNTING	VALVING	PART#	PRICE
2.0 x 14.0 SMOOTH BODY REMOTE LSC ADJUSTER - 5/8" SHAFT	35.1	21.1	2.0 x 11.00	-5 x 12.0	1/2 x 1.25	30/90	980-06-035	\$409.95
2.0 FACTORY RACE SERIES SMOOTH BODY REMOTE - 7/8" SHAFT								
2.0 X 9.5 SMOOTH BODY REMOTE - CLASS 11 REAR (CUSTOM MOUNT) - 5/8" SHAFT	18	8.525	2.5 x 14.00	-10 x 28.0	1/2 x 1.50	70/21	980-02-488	\$639.95
2.0 X 10.0 SMOOTH BODY REMOTE - 7/8" SHAFT	26.15	16.18	2.0 x 11.00	-8 x 14.0	1/2 x 1.25	50/70	983-02-036	\$329.95
2.0 X 12.0 SMOOTH BODY REMOTE - 7/8" SHAFT	31.15	19.18	2.0 x 11.00	-8 x 14.0	1/2 x 1.25	50/70	980-02-045	\$329.95
2.0 X 14.0 SMOOTH BODY REMOTE - 7/8" SHAFT	35.15	21.18	2.0 x 11.00	-8 x 14.0	1/2 x 1.25	50/70	980-02-046	\$329.95
2.0 X 16.0 SMOOTH BODY REMOTE - 7/8" SHAFT	40.15	24.18	2.0 x 11.00	-8 x 14.0	1/2 x 1.25	50/70	980-02-069	\$349.95

2.5 SMOOTH BODY SHOCKS								
	EXTENDED	COMPRESSED	RESERVOIR	HOSE	MOUNTING	VALVING	PART#	PRICE
2.5 FACTORY RACE SERIES SMOOTH BODY REMOTE - 7/8" SHAFT								
2.5 x 8.0 SMOOTH BODY REMOTE - 7/8" SHAFT	25.43	17.43	2.5 x 14.00	-10 x 18.0	1/2 x 1.50	50/70	980-02-061	\$564.95
2.5 X 10.0 SMOOTH BODY REMOTE - 7/8" SHAFT	29.37	19.5	2.5 x 10.00	-10 x 18.0	1/2 x 1.50	50/70	980-02-101	\$564.95
2.5 X 12.0 SMOOTH BODY REMOTE - 7/8" SHAFT	33.37	21.5	2.5 x 14.00	-10 x 18.0	1/2 x 1.50	50/70	980-02-102	\$599.95
2.5 X 14.0 SMOOTH BODY REMOTE - 7/8" SHAFT	38.43	24.43	2.5 x 14.00	-10 x 18.0	1/2 x 1.50	50/70	980-02-103	\$599.95
2.5 X 16.0 SMOOTH BODY REMOTE - 7/8" SHAFT	42.37	26.5	2.5 x 14.00	-10 x 18.0	1/2 x 1.50	50/70	980-02-104	\$609.95
2.5 FACTORY RACE SERIES SMOOTH BODY REMOTE DSC - DUAL SPEED COMPRESSION ADJUSTER - 7/8" SHAFT								
2.5 X 10.0 SMOOTH BODY REMOTE DSC ADJUSTER- 7/8" SHAFT	29.37	19.5	2.5 x 10.00	-10 x 18.0	1/2 x 1.50	50/70	980-06-101	\$814.95
2.5 X 12.0 SMOOTH BODY REMOTE DSC ADJUSTER- 7/8" SHAFT	33.37	21.5	2.5 x 10.00	-10 x 18.0	1/2 x 1.50	50/70	980-06-102	\$849.95
2.5 X 14.0 SMOOTH BODY REMOTE DSC ADJUSTER - 7/8" SHAFT	38.37	24.5	2.5 x 14.00	-10 x 18.0	1/2 x 1.50	50/70	980-06-103	\$849.95
2.5 X 16.0 SMOOTH BODY REMOTE DSC ADJUSTER - 7/8" SHAFT	42.37	26.5	2.5 x 14.00	-10 x 18.0	1/2 x 1.50	50/70	980-06-104	\$859.95

3.0 SMOOTH BODY SHOCKS								
	EXTENDED	COMPRESSED	RESERVOIR	HOSE	MOUNTING	VALVING	PART#	PRICE
3.0 FACTORY RACE SERIES SMOOTH BODY REMOTE - 7/8" SHAFT								
3.0 x 9.0 SMOOTH BODY REMOTE - 7/8" SHAFT	26.5	17.5	2.5 x 10.00	-10 x 18.0	1/2 x 1.50	50/70	980-02-378	\$649.95
3.0 x 10.0 SMOOTH BODY REMOTE - 7/8" SHAFT	28.44	18.55	2.5 x 10.00	-10 x 18.0	1/2 x 1.50	50/70	980-02-264	\$649.95
3.0 x 11.0 SMOOTH BODY REMOTE - 7/8" SHAFT	29.37	18.55	2.5 x 10.00	-10 x 18.0	1/2 x 1.50	50/70	980-02-357	\$649.95
3.0 x 12.0 SMOOTH BODY REMOTE - 7/8" SHAFT	32.44	20.55	2.5 x 14.00	-10 x 18.0	1/2 x 1.50	50/70	980-02-265	\$649.95
3.0 x 14.0 SMOOTH BODY REMOTE - 7/8" SHAFT	37.44	23.55	2.5 x 14.00	-10 x 18.0	1/2 x 1.50	50/70	980-02-266	\$669.95
3.0 x 16.0 SMOOTH BODY REMOTE - 7/8" SHAFT	41.42	25.42	2.5 x 14.00	-10 x 18.0	1/2 x 1.50	50/70	980-02-611	\$669.95

STABILIZER

2.0 STABILIZER								
	EXTENDED	COMPRESSED	RESERVOIR	HOSE	MOUNTING	VALVING	PART#	PRICE
2.0 FACTORY RACE SERIES STABILIZER INTERNAL FLOATING PISTON (IFP) - 1/2" SHAFT								
2.0 X 5.75 SMOOTH BODY STEERING STABILIZER - 1/2" SHAFT	17.12	11.37	-	-	-	-	980-02-050	\$144.95

ADJUSTERS	PART #	PRICE
2.0 LOW SPEED COMPRESSION (LSC) ADJUSTER		
2.0 LSC ADJUSTER KIT	815-00-074-KIT	\$132.00
2.5 DUAL SPEED COMPRESSION (DSC) ADJUSTER		
2.5 DSC ADJUSTER - 8" ALUMINUM RESERVOIR KIT	810-03-001-KIT	\$330.00
2.5 DSC ADJUSTER - 10" ALUMINUM RESERVOIR KIT	810-03-000-KIT	\$330.00
2.5 DSC ADJUSTER - 14" ALUMINUM RESERVOIR KIT	810-03-002-KIT	\$330.00
QUICK ADJUST BYPASS (QAB) ADJUSTERS		
QUICK ADJUST BYPASS (QAB) - COMPRESSION ADJUSTER KIT	815-03-010-KIT	\$88.00
QUICK ADJUST BYPASS (QAB) - REBOUND ADJUSTER KIT	815-03-011-KIT	\$88.00

EXTERNAL COOLING SYSTEM PARTS	PART #	PRICE
EXTERNAL COOLING SYSTEM ECS2 COOLERS, -8 PORTS		
11.0" ECS2 COOLER, -8 PORTS	810-00-130-KIT	\$330.00
14.0" ECS2 COOLER, -8 PORTS	810-00-131-KIT	\$330.00
17.0" ECS2 COOLER, -8 PORTS	810-00-132-KIT	\$330.00
EXTERNAL COOLING SYSTEM ECS2 COOLERS, -10 PORTS		
11.0" ECS2 COOLER, -10 PORTS	810-00-133-KIT	\$330.00
14.0" ECS2 COOLER, -10 PORTS	810-00-134-KIT	\$330.00
17.0" ECS2 COOLER, -10 PORTS	810-00-135-KIT	\$330.00

RESERVOIR MOUNTING HARDWARE	PART #	PRICE
UNIVERSAL RESERVOIR MOUNTING HARDWARE KIT		
RESERVOIR MOUNTING BLOCK: 1.360" x 1.000" TALL	026-01-000-B	\$3.00
RESERVOIR MOUNTING KIT - HOSE CLAMPS & BLOCKS	803-02-002-KIT	\$16.00
UNIVERSAL RESERVOIR MOUNTING BRACKET KIT - 2 BRACKETS & HARDWARE	803-02-042-KIT	\$39.00
2.0 SMOOTH BODY RESERVOIR MOUNTING CLAMP		
BILLET ALUMINUM 2.0 SMOOTH BODY RESERVOIR MOUNTING CLAMP	803-02-044	\$55.00

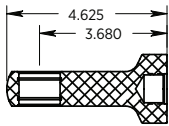
TOOLS	PART #	PRICE
2.0 SPANNER WRENCHES		
2.0 COIL-OVER PRELOAD SPANNER WRENCH, FITS 3/8" RATCHET	398-00-025-A	\$11.00
2.0 COIL-OVER PRELOAD RING SPANNER WRENCH	398-00-370	\$29.00
2.0 PIGGYBACK BRIDGE LOCK RING SPANNER WRENCH	803-00-766	\$55.00
2.5 SPANNER WRENCHES		
2.5 COIL-OVER PRELOAD RING SPANNER WRENCH	803-00-732	\$61.00
2.5 COIL-OVER PRELOAD LOCK RING SPANNER WRENCH	803-00-733	\$61.00
2.5 PIGGYBACK BRIDGE LOCK RING SPANNER WRENCH, FITS 3/8" RATCHET	398-00-025-A	\$11.00
3.0 SPANNER WRENCHES		
3.0 COIL-OVER PRELOAD RING SPANNER WRENCH	803-00-734	\$91.00
3.0 COIL-OVER PRELOAD LOCK RING SPANNER WRENCH	803-00-735	\$95.00
FOX AIR VALVE (FAV) NITROGEN FILLER GAUGE		
0-600psi FOX AIR VALVE (FAV) NITROGEN FILLER GAUGE	802-02-002-A	\$108.00
ASSEMBLY TOOLS		
5/8" SHAFT BULLET - ROD GUIDE / BEARING HOUSING SEAL INSTALLATION TOOL	398-00-094-A	\$13.00
7/8" SHAFT BULLET - ROD GUIDE / BEARING HOUSING SEAL INSTALLATION TOOL	398-00-095-A	\$13.00
1/2" & 5/8" SHAFT CLAMP	803-00-895	\$108.00

PARTS & ACCESSORIES

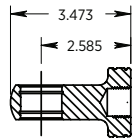
SERVICE PARTS	PART #	PRICE
VALVE SHIM KIT		
VALVE SHIM KIT - 2.0/2.5/3.0 SHOCKS	803-01-010-A	\$347.00
VALVE SHIM KIT - 2.0/2.5/3.0/3.5 SHOCKS	803-01-023	\$567.00
2.0 SHOCK REBUILD KITS		
NBR/URETHANE SEAL REBUILD KIT - 2.0 AIR SHOCK/BUMP STOP, 1-1/4" SHAFT	803-00-006-A	\$19.00
VITON SEAL REBUILD KIT - 2.0 COIL-OVER/SMOOTH BODY, 7/8" SHAFT, 2.0 RESERVOIR	803-00-545	\$17.00
VITON SEAL REBUILD KIT - 2.0 EXTERNAL BYPASS, 4 TUBE, 7/8" SHAFT, 2.0 RESERVOIR	803-00-683	\$19.00
2.5 SHOCK REBUILD KITS		
NBR/URETHANE SEAL REBUILD KIT - 2.5 AIR SHOCK/BUMP STOP, 1-5/8" SHAFT	803-00-222-A	\$27.00
VITON SEAL REBUILD KIT - 2.5 COIL-OVER/SMOOTH BODY, 7/8" SHAFT, 2.0/2.5 RESERVOIR	803-00-268-A	\$19.00
VITON SEAL REBUILD KIT - 2.5 INTERNAL BYPASS, 7/8" SHAFT, 2.0/2.5 RESERVOIR	803-00-754	\$42.00
VITON SEAL REBUILD KIT - 2.5 EXTERNAL BYPASS, 4 TUBE, 7/8" SHAFT, 2.5 RESERVOIR	803-00-676	\$28.00
3.0 SHOCK REBUILD KITS		
VITON SEAL REBUILD KIT - 3.0 SMOOTH BODY, 7/8" SHAFT, 2.5 RESERVOIR	803-00-268-A	\$19.00
VITON SEAL REBUILD KIT - 3.0 COIL-OVER/SMOOTH BODY, 1" SHAFT, 3.0 RESERVOIR	803-00-562	\$33.00
VITON SEAL REBUILD KIT - 3.0 INTERNAL BYPASS, 7/8" SHAFT, 2.0/2.5 RESERVOIR	803-00-755	\$53.00
VITON SEAL REBUILD KIT - 3.0 EXTERNAL BYPASS, 4 TUBE, 7/8" SHAFT, 2.5 RESERVOIR	803-00-678	\$33.00
VITON SEAL REBUILD KIT - 3.0 EXTERNAL BYPASS, 5 TUBE, 1" SHAFT, 2.5 RESERVOIR	803-00-679	\$50.00
VITON SEAL REBUILD KIT - 3.0 EXTERNAL BYPASS, 5 TUBE, 1-1/8" SHAFT, 3.0 RESERVOIR	803-00-170-A	\$44.00
3.5/4.0/4.4 REBUILD KITS		
VITON SEAL REBUILD KIT - 3.5 EXTERNAL BYPASS, 6 TUBE, 1" SHAFT, 3.0 RESERVOIR	803-00-218-A	\$39.00
VITON SEAL REBUILD KIT - 4.0 EXTERNAL BYPASS, 6 TUBE, 1-1/8" SHAFT, 3.5 RESERVOIR	803-00-795	\$83.00
VITON SEAL REBUILD KIT - 4.4 EXTERNAL BYPASS, 6 TUBE, 1-1/4" SHAFT, 3.0/3.5 RESERVOIR	803-00-579	\$94.00
SUSPENSION FLUID		
FOX JM92 ADVANCED SUSPENSION FLUID - QUART	025-03-011	\$25.00
FOX JM92 ADVANCED SUSPENSION FLUID - GALLON	025-03-012	\$65.00
FOX JM92 ADVANCED SUSPENSION FLUID - 5 GALLON	025-03-013	\$275.00
FOX JM92 ADVANCED SUSPENSION FLUID - 55 GALLON	025-03-014	\$2,855.00

2.0 SHOCKS

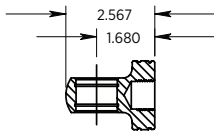
7/8 SHAFT
-10 HEIM



213-01-352-A

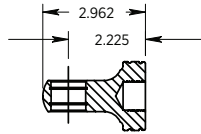


213-01-361-A

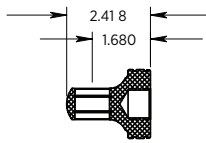


213-01-357-A

7/8 SHAFT
-8 HEIM

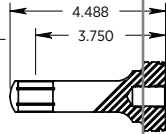


213-01-350-A

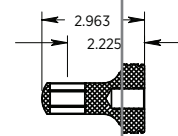


213-01-280-B

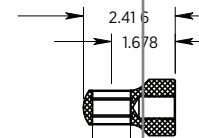
5/8 SHAFT
-8 HEIM



213-01-238-A



213-01-282-B

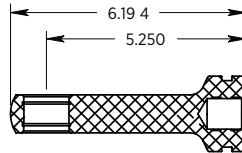


213-01-279-B

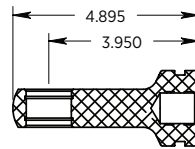
1.000

2.5 | 3.0 BP

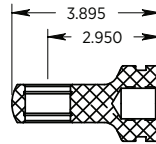
1-1/4 | 1-1/8 | 1 | 7/8 SHAFT
-10 HEIM



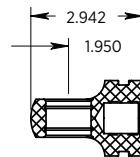
213-01-330-A



213-01-337-A



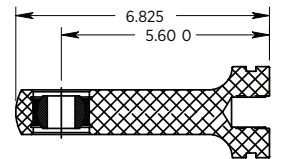
213-01-235-A



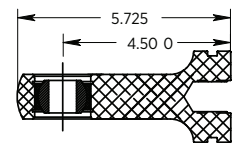
213-01-237-A

3.0 CO | 3.5 | 4.0 | 4.4

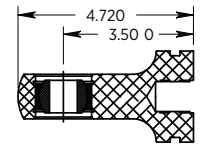
1-1/4 | 1-1/8 | 1 | 7/8 SHAFT
-12 HEIM



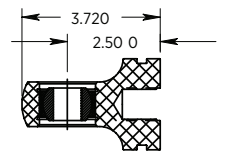
213-01-349-A



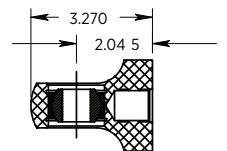
213-01-261



213-01-348-A



213-01-234-A



213-01-317-A

SHOCK SPECS

Name:

Vehicle Discription:

Vehicle Style:

Date:

Phone:

Last Service Date:

FRONT

Coil-Over / Air Shock / Smooth Body

Shock Info

Type	<input type="text"/>	Diameter (in)	<input type="text"/>	Length (in)	<input type="text"/>
Part Number	<input type="text"/>	Eyelet	<input type="text"/>	IFP / Oil Set	<input type="text"/>
Compression Valving	<input type="text"/>	Rebound Valving	<input type="text"/>	Piston Bleed Hole	<input type="text"/>

Bypass

Bypass Info

	Tube 1	Turns Open	Tube 2	Turns Open	Tube 3	Turns Open	Tube 3	Turns Open
Compression Tubes	<input type="text"/>	<input type="text"/>	<input type="text"/>	<input type="text"/>	<input type="text"/>	<input type="text"/>	<input type="text"/>	<input type="text"/>
Rebond Tubes	<input type="text"/>	<input type="text"/>	<input type="text"/>	<input type="text"/>	<input type="text"/>	<input type="text"/>	<input type="text"/>	<input type="text"/>
Other Tubes	<input type="text"/>	<input type="text"/>	<input type="text"/>	<input type="text"/>	<input type="text"/>	<input type="text"/>	<input type="text"/>	<input type="text"/>

Shock Info

Type	<input type="text"/>	Diameter (in)	<input type="text"/>	Length (in)	<input type="text"/>
Part Number	<input type="text"/>	Eyelet	<input type="text"/>	IFP / Oil Set	<input type="text"/>
Compression Valving	<input type="text"/>	Rebound Valving	<input type="text"/>	Piston Bleed Hole	<input type="text"/>

REAR

Coil-Over / Air Shock / Smooth Body

Shock Info

Type	<input type="text"/>	Diameter (in)	<input type="text"/>	Length (in)	<input type="text"/>
Part Number	<input type="text"/>	Eyelet	<input type="text"/>	IFP / Oil Set	<input type="text"/>
Compression Valving	<input type="text"/>	Rebound Valving	<input type="text"/>	Piston Bleed Hole	<input type="text"/>

Bypass

Bypass Info

	Tube 1	Turns Open	Tube 2	Turns Open	Tube 3	Turns Open	Tube 3	Turns Open
Compression Tubes	<input type="text"/>	<input type="text"/>	<input type="text"/>	<input type="text"/>	<input type="text"/>	<input type="text"/>	<input type="text"/>	<input type="text"/>
Rebond Tubes	<input type="text"/>	<input type="text"/>	<input type="text"/>	<input type="text"/>	<input type="text"/>	<input type="text"/>	<input type="text"/>	<input type="text"/>
Other Tubes	<input type="text"/>	<input type="text"/>	<input type="text"/>	<input type="text"/>	<input type="text"/>	<input type="text"/>	<input type="text"/>	<input type="text"/>

Shock Info

Type	<input type="text"/>	Diameter (in)	<input type="text"/>	Length (in)	<input type="text"/>
Part Number	<input type="text"/>	Eyelet	<input type="text"/>	IFP / Oil Set	<input type="text"/>
Compression Valving	<input type="text"/>	Rebound Valving	<input type="text"/>	Piston Bleed Hole	<input type="text"/>

BUMP STOP

Bump Info

Type	<input type="text"/>	Diameter (in)	<input type="text"/>	Length (in)	<input type="text"/>
Part Number	<input type="text"/>	Eyelet	<input type="text"/>	IFP / Oil Set	<input type="text"/>
Compression Valving	<input type="text"/>	Rebound Valving	<input type="text"/>	Piston Bleed Hole	<input type="text"/>

NOTES:

SHOX NEED ♥ TOO

INSTALLATION GUIDELINES

Always use a chassis lift for the installation of shocks, and make certain that the raised vehicle is securely attached to the lift to prevent the vehicle from slipping, falling, or moving during the installation process.

DO NOT install any FOX products without the necessary special tools, expertise and chassis lift, or you will subject yourself to the risk of serious INJURY or DEATH. If you elect to not use a chassis lift (which election may result in SERIOUS INJURY or DEATH), ensure that the vehicle is on level ground, that all tires on the ground during installation are blocked to prevent vehicle movement, that at least two tires are on the ground at all times, and that adequately secured jack stands are used to support the vehicle. NEVER get under the vehicle until you have checked to ensure that the vehicle will be stable during installation.

FOX direct-replacement shocks are designed to fit your vehicle's shock mounts with no modifications with the exception of reservoir placement on specific models and applications.

In most cases, FOX direct replacement, smooth body shocks are mounted with the shock body oriented on top.

SERVICE AND UPGRADES

Have your FOX shocks serviced or upgraded by FOX technicians. Call our Offroad and Truck Service Center to go over the service and upgrade options available for your shocks. Once you have setup your service or upgrades you will receive a return authorization number and shipping instructions.

FOX El Cajon Service Center

750 Vernon Way Suite 101
El Cajon, CA 92020
619.768.1800
orservice@ridefox.com

SERVICE INTERVALS

- Street Use: Every 50,000 miles
- Street & Off-Road Use: Every 10,000 miles
- Off-Road Use: Every 1,000 miles

SERVICE MENUS & PRICING

Please visit [RIDEFOX.COM/SERVICE](https://ridefox.com/service)



#RIDEFOX

RIDEFOX.COM

©FOX FACTORY, INC. 2019

FOX TRUCK & OFF-ROAD DIVISION

750 Vernon Way Suite 101. El Cajon, CA 92020

619.768.1800 or 1.800.FOX.SHOX

SALES orsales@ridefox.com

SERVICE orservice@ridefox.com

FIND SHOCKS FOR YOUR OFF-ROAD VEHICLE ridefox.com/offroad

GET SERVICED ridefox.com/service



WARNING: Cancer and Reproductive Harm –
www.P65Warnings.ca.gov