

ROUGH COUNTRY

SUSPENSION SYSTEMS®

Full-Size Truck LED Sport Bar

Thank you for choosing Rough Country for all your truck accessory needs.

▲ NOTICE

Please read instructions before beginning installation. Check the kit hardware against the kit contents shown below. Be sure you have all needed parts and know where they go. If question exist, please call us @ 1-800-222-7023. We will be happy to answer any questions concerning the design, function, and correct use of our products.

Tools Needed:

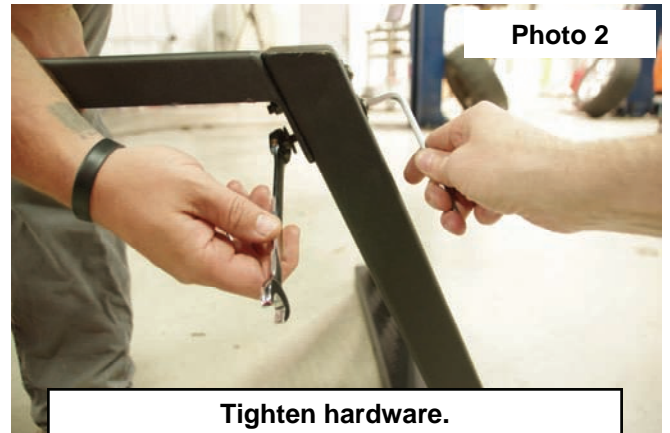
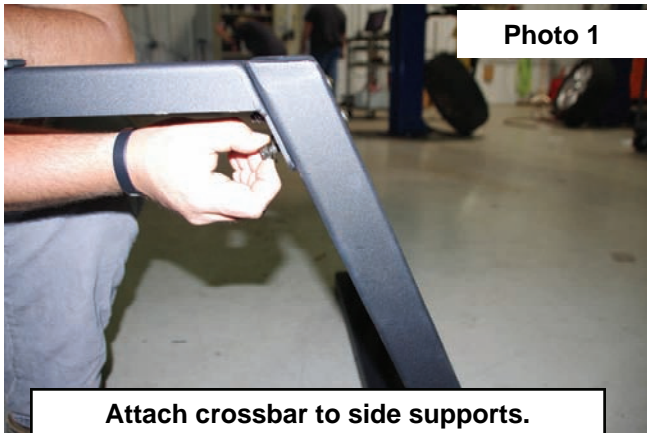
10mm Wrench
13mm Wrench
Flat Screwdriver
11/32" Drill
Drill Motor

Kit Contents

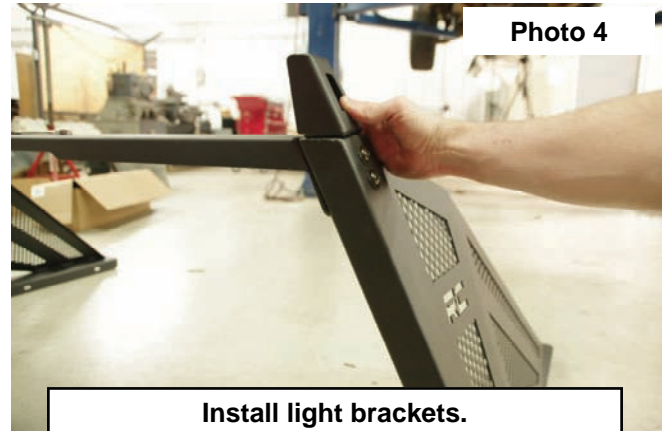
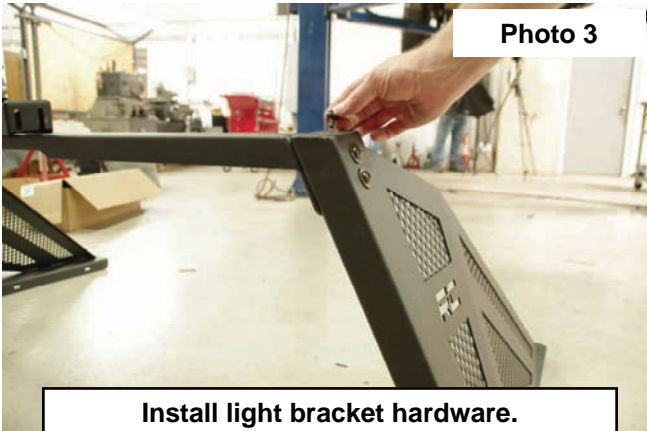
- (1) Dr Side Sport Bar Support
- (1) Pass Side Sport Bar Support
- (1) Sport Bar Crossbar
- (1) Dr Side 50" Light Mounting Bracket
- (1) Pass Side 50" Light Mounting Bracket
- (1) Hardware Bag
 - (4) 8mm x 70mm Button Head Bolts
 - (4) 8mm Lock nuts
 - (20) 8mm Flat Washers
 - (6) 8mm x 30mm Bolts
 - (6) 8mm Nuts
 - (6) 8mm Lock Washers
 - (2) 8mm Flag Nuts (GM Applications)
 - (4) 6mm x 20mm Bolts
 - (4) 6mm Lock Washers
 - (4) 6mm Flat Washers
 - (9) Cable Ties
 - (4) Rivets



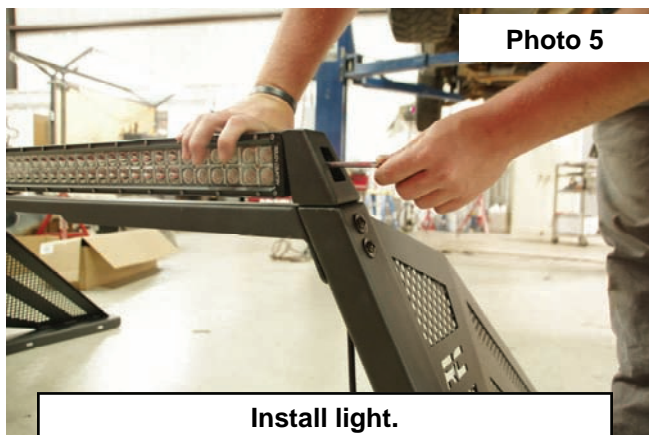
1. Park the vehicle on a smooth level surface.
2. Using the supplied 8mm x 70mm bolts, lock nuts, and flat washers, attach the crossbar to the driver and passenger side supports. **See Photo 1.**
3. Tighten using the supplied Allen and a 13mm wrench. **See Photo 2.**



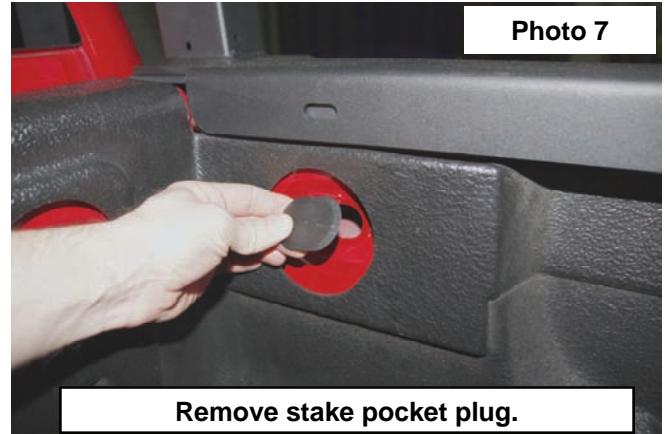
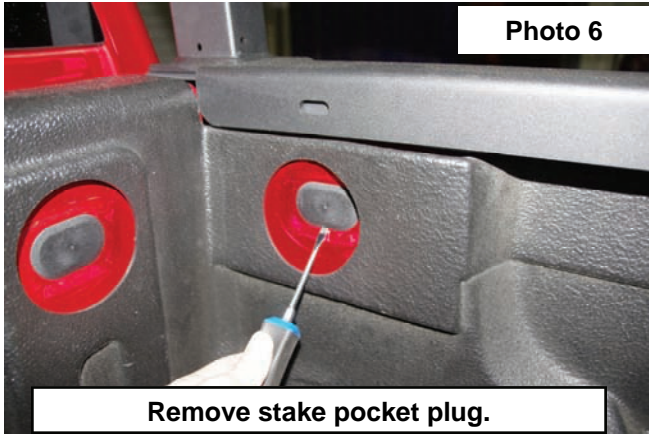
4. Install the 2, per side, 6mm x 20mm bolts, flat washers and lock washers into the tops of each side support. **You will leave these loose enough to slide on the light mounting brackets. See Photo 3.**
5. Slide the light mounting brackets on the 6mm bolts, snug bolts by hand. **See Photo 4.**



6. Install the light using the supplied hardware. **See Photo 5.**
7. Center the light on the support bar and tighten the bracket hardware using a 10mm wrench.
8. Position light to desired angle and tighten using the supplied Allen.
9. Wire light according to instructions included with light.



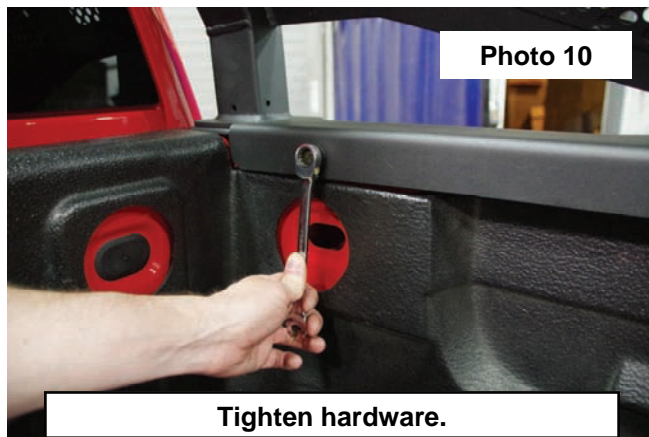
10. **On GM applications**, use a flat screwdriver to remove the stake pocket plug on the front of each bed side. **See Photo 6.**
11. Remove the stake pocket plug. **See Photo 7.**



12. Carefully place the sport bar assembly on the top of the bed rails and set at desired position.
13. Using the sport bar holes as a guide, drill using an 11/32" drill. **See Photo 8.**
14. Insert the supplied flag nut into the stake pocket and use the supplied 8mm x 30mm bolt and lock washer. **See Photo 9.**



15. Non GM models will not use the flag nuts, they will use the supplied 8mm x 30mm bolts, nuts, and lock washers.
16. Tighten the hardware using 13mm wrenches. **See Photo 10.**
17. GM models, install the stake pocket plug. **See Photo 11.**



Post Installation

1. Check hardware for proper torque.
2. Re-torque all fasteners after 500 miles. Visually inspect components and re-torque fasteners during routine service.

Torque Specs:

Size	Grade 5	Grade 8
5/16"	15 ft/lbs	20 ft/lbs
3/8"	30 ft/lbs	35 ft/lbs
9/16"	95 ft/lbs	130 ft/lbs
5/8"	135 ft/lbs	175 ft/lbs
3/4"	185 ft/lbs	280 ft/lbs
	Class 8.8	Class 10.9
10MM	32ft/lbs	45ft/lbs
12MM	55ft/lbs	75ft/lbs



By purchasing any item sold by Rough Country, LLC, the buyer expressly warrants that he/she is in compliance with all applicable , State, and Local laws and regulations regarding the purchase, ownership, and use of the item. It shall be the buyers responsibility to comply with all Federal, State and Local laws governing the sales of any items listed, illustrated or sold. The buyer expressly agrees to indemnify and hold harmless Rough Country, LLC for all claims resulting directly or indirectly from the purchase, ownership, or use of the items.

